

July 2, 2012

Press Release

Sumitomo Metal Mining Co., Ltd.

Reorganization of Divisions of SMM

On the 1st of July 2012, Sumitomo Metal Mining Co., Ltd. (“SMM”, Headquarters: Minato-ku, Tokyo, President and Representative Director: Nobumasa Kemori) launched a new “Materials Division”, an integration of the Semiconductor Materials Division, Advanced Materials Division, and Energy, Catalysts & Construction Materials Division with the aim of strengthening its materials business.

SMM is currently in the final year of its 2009 3-year Business Plan. In this plan, as a core business alongside the mineral resources and smelting and refining businesses, the materials business has as its target the concentration of management resources in growth areas through expansion in the environment and energy fields and retirement from businesses for which no potential for growth can be seen. In this period, management resources have been proactively invested in fields for which growth can be expected such as secondary battery cathode material and sapphire substrates for white LEDs, and we have pulled out of businesses and products for which no growth can be expected in the medium to long term such as bonding wire and subtractive COF.

However, given the environment in which the materials business finds itself, with an economic slump in the US and Europe, blunt economic growth in developing countries and an intensifying price competition, a tough situation is expected to continue with challenges.

Under these conditions, SMM has integrated three divisions and founded the Materials Division, and will efficiently utilize management resources and perform swift decision making to further advance the growth strategy of the materials business.

Address inquiries concerning this Press Release to:

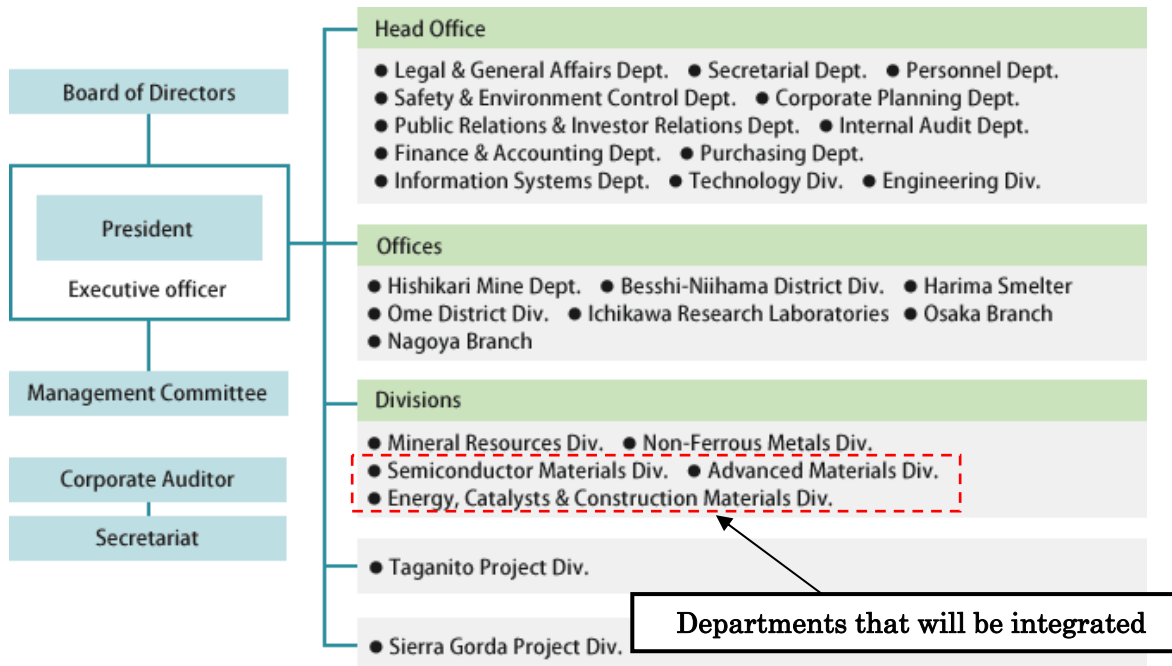
Syoki Aono, Public Relations & Investor Relations Department

TEL: +81-3-3436-7705

FAX: +81-3-3434-2215

[Reference] Scope of Organizational Reform

(Organization as of June 30, 2012)



(Organization from July 1, 2012)

