

Supplementary Explanation for Financial Summary 1st Quarter FY2011



Sierra Gorda Project

August 5th, 2011

Sumitomo Metal Mining Co., Ltd.

The materials provided herein are not intended as disclosure under the Securities Law, and no warranty is made as to their completeness or accuracy. Any projections included in these materials are based solely on information available at the time of this briefing, and are subject to change based on market conditions, competitive conditions, and a number of other factors. Therefore, we ask that you refrain from making any investment decisions based on these materials alone. The Company cannot be held responsible in any way for any losses that may occur as a result of the use of these materials.

Comparison

FY2011/1Q Result vs FY2010/4Q Result

JPY 100M

	2011/1Q ①Result	2010/4Q ②Result	Diff. ①-②
Net sales	2,129	2,208	△ 79
Operating income	281	306	△ 25
Recurring profit	376	455	△ 79
Net income	263	279	△ 16
(Inventory evaluation P&L)	21	34	△ 13
(Exchange gain & loss)	△ 13	5	△ 18
Cu (\$ /t)	9,152	9,652	△ 500
Ni (\$ /lb)	11.02	12.20	△ 1.18
Au (\$ /oz)	1,504.7	1,384.6	120.1
Exchange (¥ / \$)	81.75	82.35	△ 0.60

<Diff. of 11/1Q Result vs 10/4Q Result : Recurring profit △79>

- ①Metal price +1
(Price+13、Inventory Evaluation △11 etc.)
- ②Quantity of sales △11
- ③Cost of Smelting & Refining / Overseas mines △29
- ④Exchange loss △18
- ⑤Loss of Vale New Caledonia △21

FY2011/1H Forecast in Aug. vs FY2011/1H Forecast in May

JPY 100M

	FY2011 1Q Result	FY 2011 2Q Forecast (in Aug.)	FY2011 ①1H Forecast (in Aug.)	FY2011 ②1H Forecast (in May)	Diff. ①-②
Net sales	2,129	2,151	4,280	4,020	260
Operating income	281	189	470	440	30
Recurring profit	376	264	640	590	50
Net income	263	197	460	400	60
(Inventory evaluation P&L)	21	△ 37	△ 16	△ 17	1
(Exchange gain & loss)	△ 13	1	△ 12	0	△ 12
Cu (\$ /t)	9,152	9,000	9,076	8,500	576
Ni (\$ /lb)	11.02	10.00	10.51	11.00	△ 0.49
Au (\$ /oz)	1,504.7	1,500.0	1,502.4	1,400.0	102.4
Exchange (¥ / \$)	81.75	80.00	80.86	80.00	0.86

<Diff. of 1H Forecast in August vs 1H Forecast in May : Recurring Profit+50>

- ①Metal price +100
(Price+83、Exchange +14、Inventory Evaluation +3 etc.)
- ②Quantity of sales △25
- ③Cost of Overseas mines △6
- ④Exchange loss △12

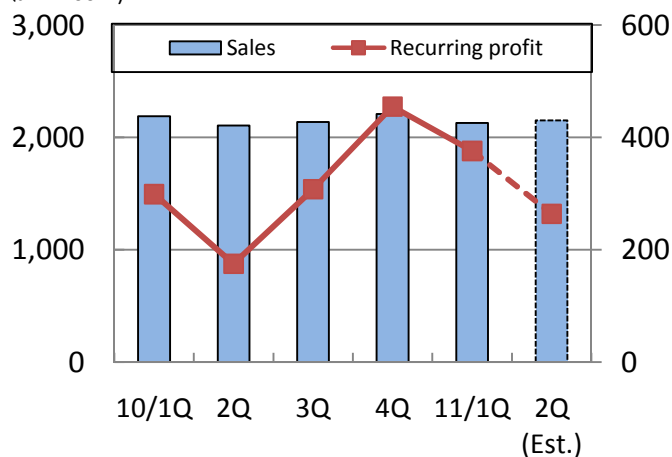
Quarterly financial results

(JPY 100M)

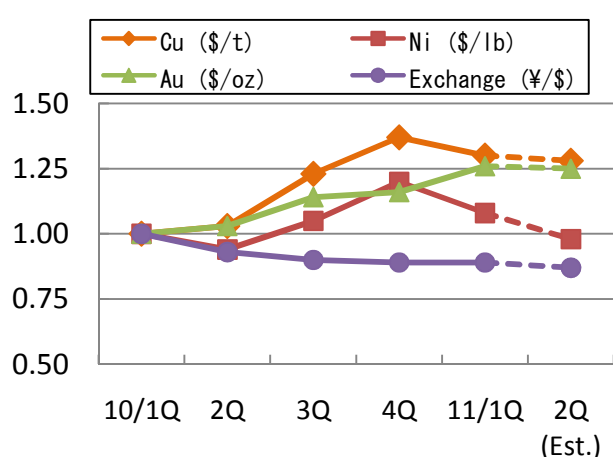
	FY2009 Result				
	1Q	2Q	3Q	4Q	Total
Net sales	1,552	1,707	1,929	2,070	7,258
Operating income	107	126	180	250	663
①Recurring profit	129	149	258	342	878
Net income	66	103	169	202	540
Cu (\$/t)	4,663	5,859	6,648	7,232	6,101
Ni (\$/lb)	5.86	8.02	7.95	9.05	7.72
Au (\$/oz)	922.0	960.1	1,101.6	1,109.6	1,023.3
Exchange (¥/\$)	97.33	93.66	89.72	90.71	92.86
Inventory impairment					
(Metals) Impairment	25	△ 5	8	4	32
(Metals) QP Diff etc.	22	21	27	21	91
(Metals) Total	47	16	35	25	123
(Materials & others)	14	12	2	4	32
②Total	61	28	37	29	155
①-②	68	121	221	313	723

	FY2010 Result					FY2011	
	1Q	2Q	3Q	4Q	Total	1Q Result	2Q Forecast
Net sales	2,190	2,107	2,136	2,208	8,641	2,129	2,151
Operating income	294	157	203	306	960	281	189
①Recurring profit	299	175	308	455	1,237	376	264
Net income	202	153	206	279	840	263	197
Cu (\$/t)	7,027	7,243	8,637	9,652	8,140	9,152	9,000
Ni (\$/lb)	10.19	9.61	10.71	12.20	10.68	11.02	10.00
Au (\$/oz)	1,195.4	1,226.8	1,368.5	1,384.6	1,293.8	1,504.7	1,500.0
Exchange (¥/\$)	92.02	85.90	82.65	82.35	85.73	81.75	80.00
Inventory impairment							
(Metals) Impairment	△ 17	15	2	0	0	△ 12	9
(Metals) QP Diff etc.	61	△ 55	6	32	44	33	△ 44
(Metals) Total	44	△ 40	8	32	44	21	△ 35
(Materials & others)	△ 3	2	0	2	1	0	△ 2
②Total	41	△ 38	8	34	45	21	△ 37
①-②	258	213	300	421	1,192	355	301

Sales (JPY 100M) Profit (JPY 100M)



Metal Price / Exchange Rate (INDEX: 10/1Q=1.0)



Segment profit (Operating income / Contribution margin)

JPY 100M

	FY2009				FY2010				FY2011	
	1Q	2Q	3Q	4Q	1Q	2Q	3Q	4Q	1Q	2Q Est.
Mineral Resources	74	67	72	96	113	108	94	115	144	106
Smelting & Refining	74	79	119	145	180	38	133	218	166	84
Materials	△ 9	13	15	26	39	24	7	8	18	12
Others	△ 8	3	△ 1	5	△ 3	0	7	6	△ 3	3
Sub-Total	131	162	205	272	329	170	241	347	325	205
Headquarter Exp. etc.	△ 24	△ 36	△ 25	△ 22	△ 35	△ 13	△ 38	△ 41	△ 44	△ 16
Operating income Total	107	126	180	250	294	157	203	306	281	189

	Result					FY2011
	2006	2007	2008	2009	2010	1H Est.
Mineral Resources	337	383	179	309	430	250
Smelting & Refining	1,181	1,174	107	417	569	250
Materials	152	98	△ 87	45	78	30
Others	63	37	6	△ 1	10	0
Sub-Total	1,733	1,692	205	770	1,087	530
Headquarter Exp. etc.	△ 107	△ 138	△ 100	△ 107	△ 127	△ 60
Operating income Total	1,626	1,554	105	663	960	470

	FY2010					FY2011		
	1Q	2Q	3Q	4Q	Total	1Q	1H Est.	
Contribution Margin	Mineral Resources	169	141	181	213	704	233	420
	Smelting & Refining	124	4	131	236	495	149	210
	Materials	32	18	△ 1	5	54	13	20
	Others	2	7	8	6	23	△ 1	0
Diff. Adjustment	△ 28	5	△ 11	△ 5	△ 39	△ 18	△ 10	
Recurring Profit Total	299	175	308	455	1,237	376	640	

Equity in earnings of affiliated companies

JPY 100M

	FY2009				FY2010				FY2011		
	1Q	2Q	3Q	4Q	1Q	2Q	3Q	4Q	1Q	2Q Est.	
Cu	Cerro Verde	17	30	33	49	39	26	51	66	54	51
	Candelaria/Ojos	11	21	20	26	17	12	40	31	40	26
	Acids/Jinlong/MSMMBC	3	6	4	0	2	2	2	6	4	△ 1
	Total	31	57	57	75	58	40	93	103	98	76
Ni	PT Inco	4	3	13	11	15	24	19	16	19	20
	Figesbal/NAC/Goro	△ 3	△ 9	△ 12	△ 1	△ 35	△ 35	2	17	△ 6	△ 14
	Total	1	△ 6	1	10	△ 20	△ 11	21	33	13	6
NECC/NK/MSZ/etc.	2	9	13	11	3	8	12	8	4	7	
Total	34	60	71	96	41	37	126	144	115	89	

	Result					FY2011	
	2006	2007	2008	2009	2010	1H Est.	
Cu	Cerro Verde	107	180	158	129	182	105
	Candelaria/Ojos	143	168	86	77	100	66
	Acids/Jinlong/MSMMBC	29	22	0	13	12	3
	Total	279	370	244	219	294	174
Ni	PT Inco	113	274	87	31	74	39
	Figesbal/NAC/Goro	8	11	△ 18	△ 25	△ 51	△ 20
	Total	121	285	69	6	23	19
NECC/NK/MSZ/etc.	67	85	2	36	31	11	
Total	467	740	315	261	348	204	

Metal price and Exchange rate

	Copper (\$/t)			Copper (¢/lb)			Nickel (\$/lb)		
	FY2009	FY2010	FY2011	FY2009	FY2010	FY2011	FY2009	FY2010	FY2011
Apr	4,407	7,745	9,483	200	351	430	5.06	11.81	11.94
May	4,569	6,838	8,927	207	310	405	5.73	9.98	10.98
Jun	5,014	6,499	9,045	227	295	410	6.79	8.79	10.14
Average	4,663	7,027	9,152	212	319	415	5.86	10.19	11.02
Jul	5,216	6,735		237	306		7.25	8.85	
Aug	6,165	7,284		280	330		8.91	9.71	
Sep	6,196	7,709		281	350		7.93	10.27	
Average	5,859	7,243		266	329		8.02	9.61	
Oct	6,288	8,292		285	376		8.40	10.80	
Nov	6,676	8,470		303	384		7.71	10.39	
Dec	6,982	9,147		317	415		7.74	10.94	
Average	6,648	8,637		302	392		7.95	10.71	
Jan	7,386	9,556		335	433		8.36	11.63	
Feb	6,848	9,868		311	448		8.61	12.82	
Mar	7,463	9,531		339	432		10.19	12.16	
Average	7,232	9,652		328	438		9.05	12.20	
FY average	6,101	8,140	9,152	277	369	415	7.72	10.68	11.02
Jan-Dec average	5,150	7,535	9,402	234	342	426	6.65	9.89	11.61
FY2011FCST									
7-9FCST			9,000			408			10.00
10-3(Est.in MAY)			8,500			386			11.00

	Gold (\$/oz)			Zinc (\$/t)			Exchange (¥/US\$)		
	FY2009	FY2010	FY2011	FY2009	FY2010	FY2011	FY2009	FY2010	FY2011
Apr	891.4	1,148.6	1,474.1	1,379	2,367	2,372	99.12	93.42	83.45
May	927.8	1,204.9	1,511.3	1,484	1,968	2,160	96.29	91.71	81.24
Jun	946.7	1,232.7	1,528.5	1,557	1,743	2,230	96.58	90.93	80.56
Average	922.0	1,195.4	1,504.7	1,473	2,026	2,254	97.33	92.02	81.75
Jul	934.3	1,194.5		1,579	1,844		94.52	87.75	
Aug	949.4	1,214.6		1,822	2,045		94.92	85.50	
Sep	996.5	1,271.2		1,884	2,151		91.55	84.46	
Average	960.1	1,226.8		1,761	2,013		93.66	85.90	
Oct	1,043.3	1,342.6		2,072	2,372		90.37	81.94	
Nov	1,126.6	1,370.8		2,193	2,292		89.22	82.55	
Dec	1,134.9	1,392.0		2,376	2,281		89.58	83.46	
Average	1,101.6	1,368.5		2,214	2,315		89.72	82.65	
Jan	1,118.8	1,358.4		2,434	2,372		91.22	82.67	
Feb	1,095.6	1,372.0		2,157	2,465		90.38	82.55	
Mar	1,114.5	1,423.4		2,275	2,349		90.54	81.82	
Average	1,109.6	1,384.6		2,289	2,395		90.71	82.35	
FY average	1,023.3	1,293.8	1,504.7	1,934	2,187	2,254	92.86	85.73	81.75
Jan-Dec average	973.0	1,225.1	1,444.6	1,665	2,161	2,325	93.59	87.82	82.05
FY2011FCST									
7-9FCST			1,500			2,200			80.00
10-3(Est.in MAY)			1,400			2,200			80.00

LME Price		FY2009	FY2010		2011/1Q
E-Ni applied	Mar - Feb	7.24	10.52	Mar - May	11.63
Fe-Ni applied	Jan - Dec	6.65	9.89	Jan - Mar	12.20

Forex		FY2009	FY2010		2011/1Q
E-Ni applied	Mar - Feb	93.48	86.46	Mar - May	82.16
Fe-Ni applied	Jan - Dec	93.59	87.82	Jan - Mar	82.35

Comparison 【FY2011/1Q vs FY2010/4Q】

3. Materials

【Net Sales, by products】

JPY 100M

	2011/1Q ①	2010/4Q ②	Diff. ①-②
Semiconductor①CuPI・COF・LF・FW	281	273	8
Semiconductor②PWB・Terminals・Recycle	100	104	△ 4
Advanced①Alloy・Film materials・Crystals	90	91	△ 1
Advanced②Battery・Magnet・Ink・Rare metals	22	18	4
Total	493	486	7

Equity in earnings of affiliated companies

JPY 100M

		2011/1Q ①	2010/4Q ②	Diff. ①-②
Cu	Cerro Verde	54	66	△ 12
	Candelaria/Ojos	40	31	9
	Acids/Jinlong /MSMMBC	4	6	△ 2
	Total	98	103	△ 5
Ni	PT Inco	19	16	3
	Figesbal/NAC/Goro	△ 6	17	△ 23
	Total	13	33	△ 20
NECC/NK/MSZ etc.		4	8	△ 4
Total		115	144	△ 29
Segment	Mineral Resources	94	97	△ 3
	Smelting & Refining	17	39	△ 22
	Others	4	8	△ 4
Total		115	144	△ 29

Comparison 【2011/1H Forecast in Aug. vs Forecast in May】

3. Materials

【Net Sales, by products】

(JPY 100M)

	FY2011/1H ①Forecast in Aug.	FY2011/1H ②Forecast in May	Diff. ①-②
Semiconductor①CuPI・COF・LF・FW	550	570	△ 20
Semiconductor②PWB・Terminals・Recycle	210	200	10
Advanced①Alloy・Film materials・Crystals	180	190	△ 10
Advanced②Battery・Magnet・Ink・Rare metals	50	40	10
Total	990	1,000	△ 10

Equity in earnings of affiliated companies

(JPY 100M)

		FY2011/1H ①Forecast in Aug.	FY2011/1H ②Forecast in May	Diff. ①-②
Cu	Cerro Verde	105	85	20
	Candelaria/Ojos	66	45	21
	Acids/Jinlong /MSMMBC	3	5	△ 2
	Total	174	135	39
Ni	PT Inco	39	39	0
	Figesbal/NAC/Goro	△ 20	△ 20	0
	Total	19	19	0
NECC/NK/MSZ etc.		11	13	△ 2
Total		204	167	37
Segment	Mineral Resources	171	130	41
	Smelting & Refining	22	24	△ 2
	Others	11	13	△ 2
Total		204	167	37

Comparison 【FY2011/1Q vs FY2010/1Q】

3. Materials

【Net Sales, by products】

(JPY100M)

	2011/1Q ①	2010/1Q ②	Diff. ①-②
Semiconductor①CuPI・COF・LF・FW	281	340	△ 59
Semiconductor②PWB・Terminals・Recycle	100	100	0
Advanced①Alloy・Film materials・Crystals	90	100	△ 10
Advanced②Battery・Magnet・Ink・Rare metals	22	27	△ 5
Total	493	567	△ 74

Equity in earnings of affiliated companies

(JPY100M)

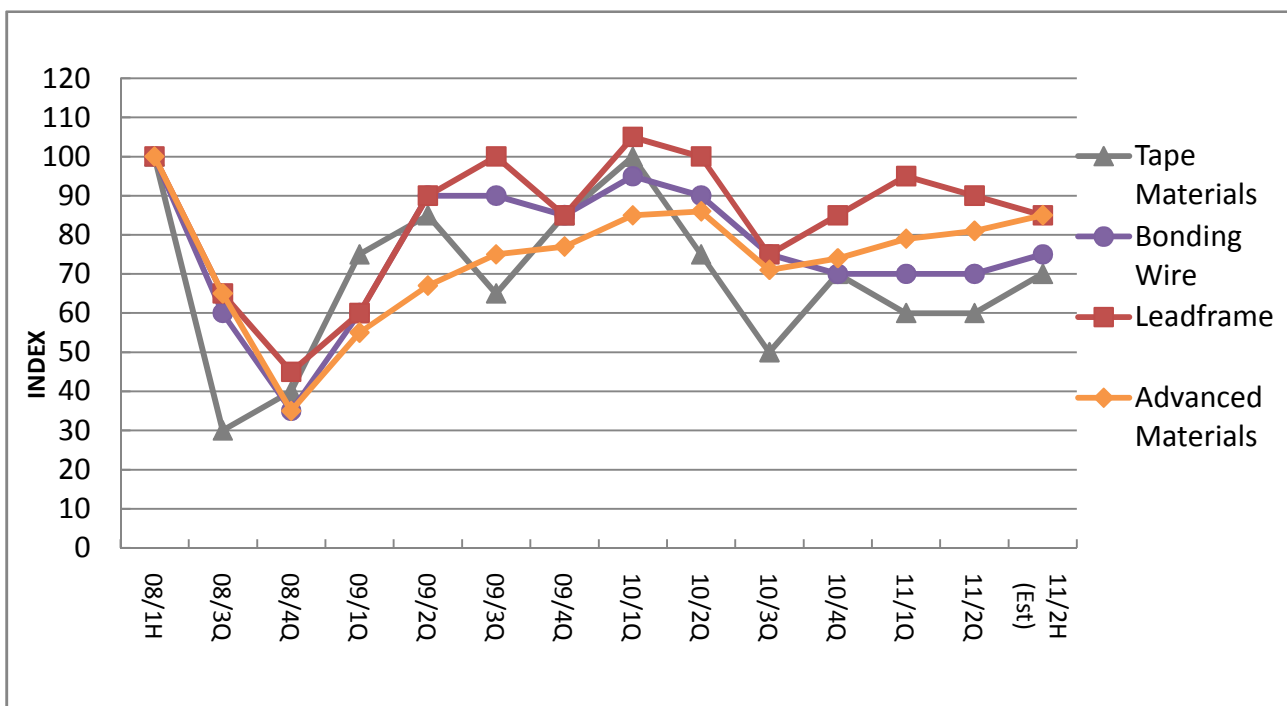
		2011/1Q ①	2010/1Q ②	Diff. ①-②
Cu	Cerro Verde	54	39	15
	Candelaria/Ojos	40	17	23
	Acids/Jinlong /MSMMBC	4	2	2
	Total	98	58	40
Ni	PT Inco	19	15	4
	Figesbal/NAC/Goro	△ 6	△ 35	29
	Total	13	△ 20	33
NECC/NK/MSZ etc.		4	3	1
Total		115	41	74
Segment	Mineral Resources	94	56	38
	Smelting & Refining	17	△ 18	35
	Others	4	3	1
Total		115	41	74

Sales trend of Semiconductor Materials and Advanced Materials

(Index FY2008/1H=100)

	FY2008 (Result)			FY2009 (Result)			
	08/1H	08/3Q	08/4Q	09/1Q	09/2Q	09/3Q	09/4Q
Tape Materials (Sales)	100	30	40	75	85	65	85
Bonding Wire (Sales Volume)	100	60	35	60	90	90	85
Leadframe (Sales)	100	65	45	60	90	100	85
Advanced Materials (Sales)	100	65	35	55	67	75	77

	FY2010 (Result)				FY2011		
	10/1Q	10/2Q	10/3Q	10/4Q	11/1Q Result	11/2Q Est.	11/2H Est.
Tape Materials (Sales)	100	75	50	70	60	60	70
Bonding Wire (Sales Volume)	95	90	75	70	70	70	75
Leadframe (Sales)	105	100	75	85	95	90	85
Advanced Materials (Sales)	85	86	71	74	79	81	85



Production/Sales trend of Mineral resources / Smelting & Refining

		FY2009					FY2010					FY2011			Diff
		Result					Result					Result	Est.	Plan	
		1Q	2Q	3Q	4Q	Total	1Q	2Q	3Q	4Q	Total ①	1Q	2Q	FY 2011 ②	②-①
(Gold Mine) (kt)															
Hishikari	Production	2.6	1.3	1.1	1.8	6.8	2.8	1.9	1.4	1.6	7.7	2.0	1.7	7.5	-0.2
	Sales	3.0	1.4	1.3	1.8	7.5	2.0	2.4	1.7	1.4	7.5	2.0	1.6	7.5	0.0
Pogo	Production	2.8	3.1	3.3	2.9	12.1	2.9	2.5	3.2	3.4	12.0	2.5	2.5	11.6	-0.4
	Sales	2.7	3.1	3.3	2.8	11.9	2.9	2.7	3.1	3.2	11.9	2.8	2.6	11.6	-0.3
(Copper Mine) (kt)															
Morenci	Production	60	55	57	55	227	52	61	58	62	233	65	72	281	48.0
	Sales	60	55	57	55	227	52	61	49	46	208	63	76	270	62.0
La Candelaria	Production	36	36	30	32	134	25	28	46	37	136	36	35	151	15.0
	Sales	40	41	33	36	150	30	31	51	40	152	36	38	151	-1.0
Ojos Del Salade	Production	7	9	10	8	34	7	8	7	8	30	7	6	27	-3.0
	Sales	7	9	10	8	34	7	8	7	8	30	6	6	27	-3.0
Cerro Verde	Production	76	77	73	74	300	75	75	75	78	303	79	77	294	-9.0
	Sales	76	77	73	77	303	75	75	75	78	303	77	78	294	-9.0
North Parkes	Production	8	10	8	8	34	9	9	10	11	39	12	12	46	7.0
	Sales	3	9	8	12	32	7	7	10	14	38	7	14	46	8.0
Batu Hijau	Production	37	52	63	72	224	66	60	65	54	245	40	28	123	-122.0
	Sales	45	50	66	73	234	65	53	69	44	231	42	28	138	-93.0
(Smelting & Refining in Japan) (kt)															
E-Cu	Production	104.4	90.8	93.8	106.8	395.8	102.6	101.2	100.0	100.3	404.1	85.5	72.7	354.0	-50.1
	Sales	110.6	99.8	99.7	100.6	410.7	109.7	102.4	106.6	92.3	411.0	99.6	94.5	397.6	-13.4
E-Ni	Production	6.5	7.5	9.9	10.0	33.9	9.9	10.5	9.8	11.1	41.3	9.5	10.9	41.0	-0.3
	Sales	8.1	7.8	9.4	11.1	36.4	9.8	10.2	10.1	10.4	40.5	10.0	11.8	43.5	3.0
FeNi	Production	5.7	5.7	4.4	4.9	20.7	3.3	4.1	5.4	5.9	18.7	4.8	5.8	22.3	3.6
	Sales	5.1	4.9	5.4	4.6	20.0	5.0	5.3	5.1	5.6	20.9	5.2	5.5	21.9	1.0
(Smelting & Refining overseas) (kt)															
CBNC MS	Production	3.0	4.1	5.4	4.5	17.0	5.6	2.7	4.7	6.4	19.4	5.6	5.1	23.0	3.6
(Ni content)	Sales	2.8	4.3	4.7	5.0	16.8	5.0	3.6	3.2	7.0	18.8	5.5	3.6	23.1	4.3
PT INCO Matte	Production	16.2	16.3	17.8	17.0	67.3	19.8	18.2	20.0	18.0	76.0	16.5	18.6	69.4	-6.6
(Ni content)	Sales	14.6	17.4	18.7	17.1	67.8	18.0	20.0	20.7	18.3	77.0	15.9	19.5	69.4	-7.6

Sensitivity

JPY 100M Per Year

	Change	FY2011 Profit up・down
Cu	±100 \$ /t	5/10
Ni	±10 ¢ /lb	7/9
Au	±10 \$ /Toz	4/4
¥ / \$	±1 ¥/\$	12/12

(Remark)

Operating income/Recurring profit

USD/JPY translation applied to RC-related only.

Financial Position

【Shareholder's Equity Ratio】

JPY 100M

End of FY	FY2007	FY2008	FY2009	FY2010	2011/1Q	09 3-Yr Plan 2012
Net assets	10,918	8,800	9,815	10,524	10,610	11,200
Shareholder's equity	5,896	5,046	5,866	6,301	6,505	6,740
Shareholder's Equity Ratio	54.0%	57.3%	59.8%	59.9%	61.3%	60%

【D/E Ratio】

JPY 100M

End of FY	FY2007	FY2008	FY2009	FY2010	2011/1Q	09 3-Yr Plan 2012
Interest-bearing debt	2,581	2,185	2,009	2,110	2,113	2,740
Shareholder's equity	5,896	5,046	5,869	6,301	6,505	6,740
D/E ratio	0.44	0.43	0.34	0.33	0.32	0.4

【Dividend payout ratio】

End of FY	FY2007	FY2008	FY2009	FY2010	09 3-Yr Plan 2012
Dividend / share (JPY)	30.0	13.0	20.0	32.0	-
Net Income / share (JPY)	238.13	38.87	96.26	149.38	-
Dividend payout ratio	12.6%	33.4%	20.8%	21.4%	20% +

Consolidated companies (60) / Equity-method affiliated companies (14)

at June 30, 2011

Mineral Resources

	Voting Shares	Location	Operations
Consolidated companies			
Sumiko Resources Exploration & Development Co., Ltd	100	Japan	Geological survey of resources; Test boring
Sumitomo Metal Mining America	100	USA	Exploration; Management of mining subsidiaries in USA.
Sumitomo Metal Mining Arizona	80	USA	Mining and related operations
SMMA Candelaria Inc.	100	USA	Investment in local company in Chile operating Candelaria Mine
Sumitomo Metal Mining Canada Ltd.	100	Canada	Exploration, Consulting
Sumitomo Metal Mining Oceania	100	Australia	Resource surveys, mine development and related operations in Oceania
Sumitomo Metal Mining Pogo LLC	100	USA	Investment in Pogo Mine Project
SMM Resources	100	Canada	Mineral Resources Business
SMM Cerro Verde Netherlands B.V.	80	Netherlands	Investments in local Peruvian companies engaged in the Cerro Verde Mine operation
SMM Exploration Corporation	100	USA	Mineral Resources Business
SMM Solomon Limited	70	Solomon Islands	Exploration in Solomons Islands
Sumitomo Metal Mining Peru S.A	100	Peru	Exploration in South America
Sumitomo Metal Mining Chile LTDA.	100	Chile	Exploration in South America
Sumiko Solomon Exploration Co., Ltd.	70	Japan	Exploration in Solomons Islands
SUMAC MINES LTD.	100	Canada	Exploration
Stone Boy Inc.	80	USA	Exploration
Equity-method affiliated companies			
Sociedad Minera Cerro Verde S.A.A	21	Peru	Cerro Verde Mine
Compania Contractual Minera Candelaria	20	Chile	Candelaria Mine
Compania Contractual Minera Ojos del Salado	20	Chile	Ojos del Salade Mine

Metals

	Voting Shares	Location	Operations
Consolidated companies			
Hyuga Smelting Co., Ltd	60	Japan	Ferro-nickel smelting
Shisaka Smelting Co.,Ltd.	100	Japan	Manufacture of crude zinc oxide
Sumiko Logistics Co., Ltd.	100	Japan	Maritime trading; Harbor transportation and services; Land Transportation
SUMIC Nickel Netherlands b.v.	52	Netherlands	Investment in nickel and cobalt development businesses; Sale of nickel and cobalt
Coral Bay Nickel Corporation	54	Philippines	Manufacture of nickel and cobalt
Taganito HPAL Nickel Corporation	62.5	Philippines	Taganito Project
Sumitomo Metal Mining Philippine Holdings Corporation	100	Philippines	Regional headquarters for the nickel business
Sumiko Business Consulting(Shanghai) Co., Ltd.	100	China	Business consulting
Taihei Metal Industry Co., Ltd.	97	Japan	Manufacture of heat-, corrosion- and friction-resistant steel castings and precision castings
Equity-method affiliated companies			
Jinlong Copper Co., Ltd.	27	China	Manufacture and sale of electrolytic copper and sulfuric acid
Acids Co., Ltd.	50	Japan	Manufacture and sale of sulfuric acid and related products
P.T.International Nickel Indonesia	20	Indonesia	Nickel ore mining; Nickel smelting
Nickel Asia Corporation	25	Philippines	Nickel ore mining
FIGESBAL	26	New Caledonia	Nickel ore mining; Harbor transportation
Vale New-Caledonia S.A.S.	21	France	Goro Mine
MS Zinc Co., Ltd.	50	Japan	Manufacture and sale of zinc and related operations
Mitsui Sumitomo Metal Mining Brass & Copper Co.,Ltd	50	Japan	Manufacture and sale of copper and brass products and processed copper and brass products

Materials

	Voting Shares	Location	Operations
Consolidated companies			
Okuchi Electronics Co., Ltd.	100	Japan	Lead frame etching and plating/ Manufacture of Bonding wire and functional inks/Recovery and recycling of non-ferrous metals
Niihama Electronics Co., Ltd.	100	Japan	Manufacture of semiconductor leadframes and flexible circuit materials
Shinko Co., Ltd.	94	Japan	Design, manufacture, and sale of printed circuit boards
Sumitomo Metal Mining Asia Pacific Pte.Ltd.	100	Singapore	Regional headquarters for international lead frame operations
Malaysian Electronics Materials SDN. BHD.	100	Malaysia	Manufacture and sale of bonding wire and thick-film paste
M-SMM Electronics SDN.BHD	100	Malaysia	Manufacture and sale of leadframes
Sumiko Electronics Taiwan Co.,Ltd.	70	Taiwan	Manufacture and sale of leadframes and tape materials
Sumiko Leadframe (Thailand) Co.,Ltd.	100	Thailand	Manufacture and sale of leadframes
Sumiko Leadframe Chengdu Co., Ltd.	85	China	Manufacture and sale of leadframes
Sumiko Precision Chengdu Co., Ltd	70	China	Manufacture of leadframes
Sumiko Electronics Suzhou Co., Ltd.	100	China	Manufacture and sale of semiconductor package materials
Sumitomo Metal Mining Electronics Materials(Shanghai) Co., Ltd.	100	China	Manufacture and sale of bonding wire
SumikoTec Co., Ltd.	100	Japan	Terminals and connectors for electronic and electric equipment/Components, electric wire, power cords and pressure bonding machines relating to the above and their maintenance/Manufacture and sale of formed products for optical equipment, etc.
Nittosha Co., Ltd.	100	Japan	Plating of metal products, surface treatment processing and distribution / Electromagnetic shielding processing to electronics resin products through a dry plating method
Sumiko Kunitomi Denshi Co., Ltd.	100	Japan	Manufacture of crystal products and magnetic materials
Shanghai Sumiko Electronic Paste Co., Ltd.	51	China	Manufacture and sale of thick-film paste
Dongguan Sumiko Electronic Paste Co., Ltd.	76	China	Manufacture and sale of thick-film paste
SMM KOREA Co.,Ltd.	100	Korea	Sales support for advanced materials and business operations
Taiwan Sumiko Materials Co., Ltd	70	Taiwan	Manufacture of bonding wire
SMM Precision Co., Ltd.	100	Japan	Manufacture and sale of optical communications components
Equity-method affiliated company			
Granopt Ltd.	50	Japan	Manufacture and sale of rare earth iron garnet (RIG)

Others

Consolidated companies			
Sumico Lubricant Co., Ltd.	100	Japan	Manufacture and sale of various lubricants
Sumico Lubricant Trading (Shanghai) Co.,Ltd	100	China	Sale of various lubricants
Sumitomo Metal Mining Siporex Co., Ltd.	100	Japan	Manufacture and sale of ALC (Autoclaved Lightweight aerated Concrete) and other construction materials
JCO Co., Ltd.	100	Japan	Management of facilities using uranium and related wastes
Igeta Heim Co., Ltd.	100	Japan	Construction of steel frame and reinforced concrete apartments and condominiums
Sumiko Techno-Research Co., Ltd.	100	Japan	Environmental measurement verification operations such as water quality, air, soil, noise and vibration, etc. Data collection, adjustment and product evolution as well as technological development
Sumiko Technical Service Co., Ltd	100	Japan	Commission-based work in area of nonferrous smelting/ Personnel agency business
Sumitomo Metal Mining Engineering Co., Ltd.	100	Japan	Nonferrous metal smelting, Chemicals business, Environment sector machinery & equipment, Plant surveys, etc. design, manufacturing and repair & maintenance
Sumiko Plantech Co., Ltd.	100	Japan	Manufacture of machinery & equipment and repair work for nonferrous metal smelting and chemical plants, etc. / Installation of machinery & equipment and piping work / Steel structure work
Japan Irradiation Service Co., Ltd.	100	Japan	Irradiation sterilization service for pharmaceutical products, medical instruments, and pharmaceutical containers,etc., /Modification of various industrial materials
SMM Holland B.V.	100	Netherlands	Investment in nickel and cobalt development businesses
Equity-method affiliated companies			
N. E. Chemcat Corporation	50	Japan	Manufacture of precious metal catalysts and surface treatment chemicals; Recovery and refining of precious metals
Nippon Ketjen Co., Ltd.	50	Japan	Manufacture and sale of desulphurization catalysts for petroleum processing