

Supplementary Explanation for Financial Summary

2nd Quarter FY2011



Battery Materials, Isoura Plant

November 8th, 2011

Sumitomo Metal Mining Co., Ltd.

The materials provided herein are not intended as disclosure under the Securities Law, and no warranty is made as to their completeness or accuracy. Any projections included in these materials are based solely on information available at the time of this briefing, and are subject to change based on market conditions, competitive conditions, and a number of other factors. Therefore, we ask that you refrain from making any investment decisions based on these materials alone. The Company cannot be held responsible in any way for any losses that may occur as a result of the use of these materials.

Comparison

FY2011/1H Result vs FY2010/1H Result vs FY2011/1H Forecast in Aug.

JPY100M

	11/1H Result①	10/1H Result②	Diff. ①-②	11/1H FCST. in Aug③	Diff. ①-③
Net sales	4,343	4,297	46	4,280	63
Operating income	451	451	0	470	△ 19
Recurring profit	615	474	141	640	△ 25
Net income	375	355	20	460	△ 85
(Inventory evaluation P&L)	△ 43	3	△ 46	△ 16	△ 27
(Exchange gain & loss)	△ 42	△ 46	4	△ 12	△ 30
Cu (\$ /t)	9,072	7,135	1,937	9,076	△ 4
Ni (\$ /lb)	10.52	9.90	0.62	10.51	0.01
Au (\$ /oz)	1,603.1	1,211.1	392.0	1,502.4	100.7
Exchange (¥ / \$)	79.82	88.96	△ 9.14	80.86	△ 1.04

Exchange	11/2QEnd	11/1QEnd	10/4QEnd	10/3QEnd	10/2QEnd	10/1QEnd	09/4QEnd
(¥ / \$)	76.65	80.68	83.15	81.52	83.80	88.52	93.05

【Diff. of 11/1H Result vs 10/1H Result ①-②】

Recurring profit +141 <Price+217、Decrease of loss of Vale New Caledonia +47、Cost@△50、
Materials segment, Other Business, Diff.adjustment△69 etc.>

【Diff. of 11/1H Result vs 11/1H Forecast in Aug. ①-③】

Recurring profit △25 <Inventory Evaluation△27、Increase of Exchange Loss△30、
Increase of Equity in earnings of affiliated companies+23 (204→227)、etc.>

FY2011Forecast in Nov vs in May / FY2011/1H Result vs 2H Forecast

JPY 100M

	FY2011/1H ①Result	FY2011/2H ②FCST in Nov.	FY2011 ③FCST in Nov.	FY2011/1H FCST in May	FY2011/2H FCST in May	FY2011 ④FCST in May	Diff. ③-④	Diff. ②-①
Net sales	4,343	3,807	8,150	4,020	4,070	8,090	60	△ 536
Operating income	451	349	800	440	500	940	△ 140	△ 102
Recurring profit	615	425	1,040	590	650	1,240	△ 200	△ 190
Net income	375	295	670	400	450	850	△ 180	△ 80
(Inventory evaluation P&L)	△ 43	△ 46	△ 89	△ 17	△ 17	△ 34	△ 55	△ 3
(Exchange gain & loss)	△ 42	0	△ 42	0	0	0	△ 42	42
Cu (\$ /t)	9,072	8,000	8,536	8,500	8,500	8,500	36	△ 1,072
Ni (\$ /lb)	10.52	9.00	9.76	11.00	11.00	11.00	△ 1.24	△ 1.52
Au (\$ /oz)	1,603.1	1,650.0	1,626.6	1,400.0	1,400.0	1,400.0	226.6	46.9
Exchange (¥ / \$)	79.82	75.00	77.41	80.00	80.00	80.00	△ 2.59	△ 4.82

【Diff. Of Forecast in Nov. vs Forecast in May ③-④】

Recurring Profit △200 <Price△20、Quantity△23、Cost△51、Materials Segment△90、
Increase of Exchange loss△42、etc>

【Diff. of 2H Forecast vs 1H Result ②-①】

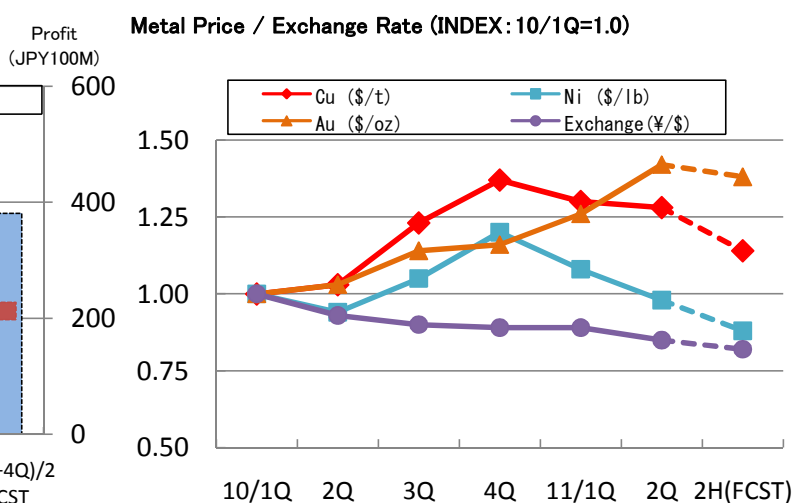
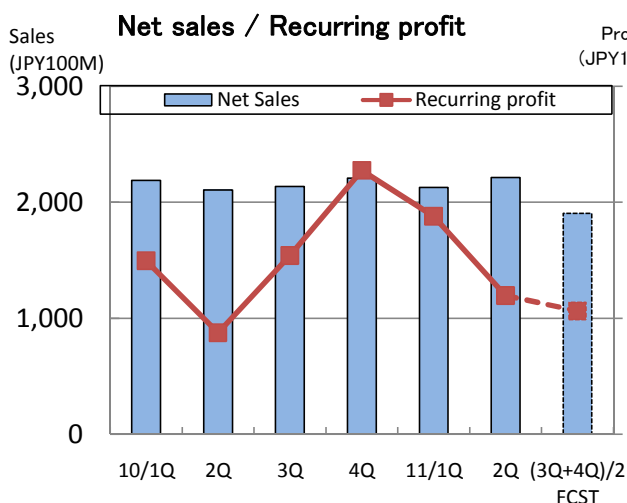
Recurring Profit △190 <Price △235、Materials Segment △32、Decrease of Exchange loss +42、etc.>

Quarterly financial results

JPY100M

	FY2009 Result				
	1Q	2Q	3Q	4Q	Total
Net sales	1,552	1,707	1,929	2,070	7,258
Operating income	107	126	180	250	663
①Recurring profit	129	149	258	342	878
Net income	66	103	169	202	540
Cu (\$/t)	4,663	5,859	6,648	7,232	6,101
Ni (\$/lb)	5.86	8.02	7.95	9.05	7.72
Au (\$/oz)	922.0	960.1	1,101.6	1,109.6	1,023.3
Exchange (¥/\$)	97.33	93.66	89.72	90.71	92.86
Inventory impairment					
(Smelting) Impairment	25	△ 5	8	4	32
(Smelting) QP Diff etc.	22	21	27	21	91
(Smelting) Total	47	16	35	25	123
(Materials & others)	14	12	2	4	32
②Total	61	28	37	29	155
①-②	68	121	221	313	723

	FY2010 Result					FY2011				
	1Q	2Q	3Q	4Q	Total	1Q Result	2Q Result	1H Result	2H FCST	FY2011FCST
Net sales	2,190	2,107	2,136	2,208	8,641	2,129	2,214	4,343	3,807	8,150
Operating income	294	157	203	306	960	281	170	451	349	800
①Recurring profit	299	175	308	455	1,237	376	239	615	425	1,040
Net income	202	153	206	279	840	263	112	375	295	670
Cu (\$/t)	7,027	7,243	8,637	9,652	8,140	9,152	8,992	9,072	8,000	8,536
Ni (\$/lb)	10.19	9.61	10.71	12.20	10.68	11.02	10.01	10.52	9.00	9.76
Au (\$/oz)	1,195.4	1,226.8	1,368.5	1,384.6	1,293.8	1,504.7	1,701.6	1,603.1	1,650.0	1,626.6
Exchange (¥/\$)	92.02	85.90	82.65	82.35	85.73	81.75	77.89	79.82	75.00	77.41
Inventory impairment										
(Smelting) Impairment	△ 17	15	2	0	0	△ 12	△ 40	△ 52	0	△ 52
(Smelting) QP Diff etc.	61	△ 55	6	32	44	33	△ 17	16	△ 46	△ 30
(Smelting) Total	44	△ 40	8	32	44	21	△ 57	△ 36	△ 46	△ 82
(Materials & others)	△ 3	2	0	2	1	0	△ 7	△ 7	0	△ 7
②Total	41	△ 38	8	34	45	21	△ 64	△ 43	△ 46	△ 89
①-②	258	213	300	421	1,192	355	303	658	471	1,129



Segment profit (Operating income / Contribution margin)

JPY100M

	FY2009 Result					FY2010 Result					FY2011			
	1Q	2Q	3Q	4Q	Total	1Q	2Q	3Q	4Q	Total	1Q	2Q	2H(FCST)	Total(FCST)
Mineral Resources	74	67	72	96	309	113	108	94	115	430	144	150	236	530
Smelting & Refining	74	79	119	145	417	180	38	133	218	569	166	47	157	370
Materials	△ 9	13	15	26	45	39	24	7	8	78	18	3	△ 11	10
Others	△ 8	3	△ 1	5	△ 1	△ 3	0	7	6	10	△ 3	0	3	0
Sub-Total	131	162	205	272	770	329	170	241	347	1,087	325	200	385	910
Headquarter Exp. etc.	△ 24	△ 36	△ 25	△ 22	△ 107	△ 35	△ 13	△ 38	△ 41	△ 127	△ 44	△ 30	△ 36	△ 110
Operating income Total	107	126	180	250	663	294	157	203	306	960	281	170	349	800

	Result					2011 FCST	2011FCST
	2006	2007	2008	2009	2010	in Nov.	in May
Mineral Resources	337	383	179	309	430	530	490
Smelting & Refining	1,181	1,174	107	417	569	370	460
Materials	152	98	△ 87	45	78	10	90
Others	63	37	6	△ 1	10	0	0
Sub-Total	1,733	1,692	205	770	1,087	910	1,040
Headquarter Exp. etc.	△ 107	△ 138	△ 100	△ 107	△ 127	△ 110	△ 100
Operating income Total	1,626	1,554	105	663	960	800	940

	FY2010					FY2011				2011FCST	
	1Q	2Q	3Q	4Q	Total	1Q	2Q	2H(FCST)	Total(FCST)	in May	
Contribution Margin	Mineral Resources	169	141	181	213	704	233	240	337	810	730
	Smelting & Refining	124	4	131	236	495	149	26	85	260	390
	Materials	32	18	△ 1	5	54	13	△ 7	△ 26	△ 20	70
	Others	2	7	8	6	23	△ 1	6	5	10	10
Diff. Adjustment	△ 28	5	△ 11	△ 5	△ 39	△ 18	△ 26	24	△ 20	40	
Recurring Profit Total	299	175	308	455	1,237	376	239	425	1,040	1,240	

Equity in earnings of affiliated companies

JPY100M

	FY2009					FY2010					FY2011				
	1Q	2Q	3Q	4Q	Total	1Q	2Q	3Q	4Q	Total	1Q	2Q	2H(FCST)	Total(FCST)	
Cu	Cerro Verde	17	30	33	49	129	39	26	51	66	182	54	68	68	190
	Candelaria/Ojos	11	21	20	26	78	17	12	40	31	100	40	28	42	110
	Acids/Jinlong/MSMMBC	3	6	4	0	13	2	2	2	6	12	4	1	5	10
	Total	31	57	57	75	220	58	40	93	103	294	98	97	115	310
Ni	PT Inco	4	3	13	11	31	15	24	19	16	74	19	22	19	60
	Figesbal/NAC/Goro	△ 3	△ 9	△ 12	△ 1	△ 25	△ 35	△ 35	2	17	△ 51	△ 6	△ 11	△ 43	△ 60
	Total	1	△ 6	1	10	6	△ 20	△ 11	21	33	23	13	11	△ 24	0
NECC/NK/MSZ/etc.	2	9	13	11	35	3	8	12	8	31	4	4	12	20	
Total	34	60	71	96	261	41	37	126	144	348	115	112	103	330	

	Result					2011 FCST	2011FCST	
	2006	2007	2008	2009	2010	in Nov.	in May	
Cu	Cerro Verde	107	180	158	129	182	190	170
	Candelaria/Ojos	143	168	86	77	100	110	90
	Acids/Jinlong/MSMMBC	29	22	0	13	12	10	10
	Total	279	370	244	219	294	310	270
Ni	PT Inco	113	274	87	31	74	60	80
	Figesbal/NAC/Goro	8	11	△ 18	△ 25	△ 51	△ 60	△ 40
	Total	121	285	69	6	23	0	40
NECC/NK/MSZ/etc.	67	85	2	36	31	20	30	
Total	467	740	315	261	348	330	340	

Metal price and Exchange rate

	Copper (\$/t)			Copper (¢/lb)			Nickel (\$/lb)		
	FY2009	FY2010	FY2011	FY2009	FY2010	FY2011	FY2009	FY2010	FY2011
Apr	4,407	7,745	9,483	200	351	430	5.06	11.81	11.94
May	4,569	6,838	8,927	207	310	405	5.73	9.98	10.98
Jun	5,014	6,499	9,045	227	295	410	6.79	8.79	10.14
Average	4,663	7,027	9,152	212	319	415	5.86	10.19	11.02
Jul	5,216	6,735	9,619	237	306	436	7.25	8.85	10.76
Aug	6,165	7,284	9,041	280	330	410	8.91	9.71	10.02
Sep	6,196	7,709	8,315	281	350	377	7.93	10.27	9.25
Average	5,859	7,243	8,992	266	329	408	8.02	9.61	10.01
Oct	6,288	8,292		285	376		8.40	10.80	
Nov	6,676	8,470		303	384		7.71	10.39	
Dec	6,982	9,147		317	415		7.74	10.94	
Average	6,648	8,637		302	392		7.95	10.71	
Jan	7,386	9,556		335	433		8.36	11.63	
Feb	6,848	9,868		311	448		8.61	12.82	
Mar	7,463	9,531		339	432		10.19	12.16	
Average	7,232	9,652		328	438		9.05	12.20	
FY average	6,101	8,140	9,072	277	369	412	7.72	10.68	10.52
Jan-Dec average	5,150	7,535	9,265	234	342	420	6.65	9.89	11.08
FY2011FCST									
2H FCST in Nov.			8,000			363			9.00
2H FCST in May			8,500			386			11.00

	Gold (\$/oz)			Zinc (\$/t)			Exchange (¥/US\$)		
	FY2009	FY2010	FY2011	FY2009	FY2010	FY2011	FY2009	FY2010	FY2011
Apr	891.4	1,148.6	1,474.1	1,379	2,367	2,372	99.12	93.42	83.45
May	927.8	1,204.9	1,511.3	1,484	1,968	2,160	96.29	91.71	81.24
Jun	946.7	1,232.7	1,528.5	1,557	1,743	2,230	96.58	90.93	80.56
Average	922.0	1,195.4	1,504.7	1,473	2,026	2,254	97.33	92.02	81.75
Jul	934.3	1,194.5	1,570.7	1,579	1,844	2,391	94.52	87.75	79.52
Aug	949.4	1,214.6	1,757.7	1,822	2,045	2,212	94.92	85.50	77.28
Sep	996.5	1,271.2	1,776.3	1,884	2,151	2,077	91.55	84.46	76.88
Average	960.1	1,226.8	1,701.6	1,761	2,013	2,227	93.66	85.90	77.89
Oct	1,043.3	1,342.6		2,072	2,372		90.37	81.94	
Nov	1,126.6	1,370.8		2,193	2,292		89.22	82.55	
Dec	1,134.9	1,392.0		2,376	2,281		89.58	83.46	
Average	1,101.6	1,368.5		2,214	2,315		89.72	82.65	
Jan	1,118.8	1,358.4		2,434	2,372		91.22	82.67	
Feb	1,095.6	1,372.0		2,157	2,465		90.38	82.55	
Mar	1,114.5	1,423.4		2,275	2,349		90.54	81.82	
Average	1,109.6	1,384.6		2,289	2,395		90.71	82.35	
FY average	1,023.3	1,293.8	1,603.1	1,934	2,187	2,240	92.86	85.73	79.82
Jan-Dec average	973.0	1,225.1	1,530.3	1,665	2,161	2,292	93.59	87.82	80.66
FY2011FCST									
2H FCST in Nov.			1,650			2,000			75.00
2H FCST in May			1,400			2,200			80.00

LME Price		FY2009	FY2010		11/1Q		11/2Q		11/2H FCST
E-Ni applied	Mar-Feb	7.24	10.52	Mar-May	11.63	Jun-Aug	10.31	Sep-Feb	9.04
Fe-Ni applied	Jan-Dec	6.65	9.89	Jan-Mar	12.20	Apr-Jun	11.02	Jul-Dec	9.51

Exchange		FY2009	FY2010		11/1Q		11/2Q		11/2H FCST
E-Ni applied	Mar-Feb	93.48	86.46	Mar-May	82.17	Jun-Aug	79.12	Sep-Feb	75.31
Fe-Ni applied	Jan-Dec	93.59	87.82	Jan-Mar	82.35	Apr-Jun	81.75	Jul-Dec	76.45

Comparison 【FY2011/1H vs FY2010/1H】

JPY100M

Operating income				Contribution margin			
	11/1H ①	10/1H ②	Diff. ①-②		11/1H ③	10/1H ④	Diff. ③-④
Mineral Resources	294	221	73	Mineral Resources	473	310	163
Smelting&Refining	213	218	△ 5	Smelting & Refining	175	128	47
Materials	21	63	△ 42	Materials	6	50	△ 44
Others	△ 3	△ 3	0	Others	5	9	△ 4
Sub-Total	525	499	26	Diff. Adjustment	△ 44	△ 23	△ 21
Headquarter Exp.etc.	△ 74	△ 48	△ 26	Recurring Profit	615	474	141
Total	451	451	0				

<<Explanation of Diff.>>

1. Mineral Resources

JPY100M

Division	Diff.	Quantity	Price	Exchange	Cost@	Others
Hishikari (Au)	24	△ 3	42	△ 15	1	△ 1
Pogo (Au)	9	△ 3	39	△ 7	△ 16	△ 4
Morenci/NP (Cu)	34					
Others	6					
Op. income Total	73					

Au Sales (t)	11/2Q	10/2Q	Diff.
Hishikari	4.3	4.4	△ 0.1
Pogo(100%)	5.4	5.6	△ 0.2

2. Smelting & Refining

JPY100M

	Diff.	Quantity	Price	Cost@	Inventory	Others
Copper	15	△ 8	8	△ 2	4	13
Nickel	△ 21	4	26	3	△ 43	△ 11
Zinc/Lead	3	△ 1		2	△ 1	3
Others	△ 2					△ 2
Op. income Total	△ 5	△ 5	34	3	△ 40	3

•Inventory evaluation P&L
 11/1H △ 36 (JPY100M) (Copper△20、Nickel△14、Zinc△2)
 10/1H 4 (JPY100M) (Copper△24、Nickel 29、Zinc△1)

Comparison 【FY2011/1H vs FY2010/1H】

3. Materials

【Net Sales, by products】

JPY100M

	2011/1H ①	2010/1H ②	Diff. ①-②
Semiconductor①CuPI・COF・LF・FW	549	653	△ 104
Semiconductor②PWB・Terminals・Recycle	211	196	15
Advanced①Alloy・Film materials・Crystals	170	197	△ 27
Advanced②Battery・Magnet・Ink・Rare metals	52	56	△ 4
Total	982	1,102	△ 120

Equity in earnings of affiliated companies

JPY100M

		2011/1H ①	2010/1H ②	Diff. ①-②
Cu	Cerro Verde	122	65	57
	Candelaria/Ojos	68	29	39
	Acids/Jinlong /MSMMBC	5	4	1
	Total	195	98	97
Ni	PT Inco	41	39	2
	Figesbal/NAC/Goro	△ 17	△ 70	53
	Total	24	△ 31	55
NECC/NK/MSZ etc.		8	11	△ 3
Total		227	78	149
Segment	Mineral Resources	190	94	96
	Smelting & Refining	25	△ 31	56
	Others	12	15	△ 3
Total		227	78	149

Comparison 【FY2011/2Q vs FY2011/1Q】

JPY100M

Operating income				Contribution margin			
	2011/2Q	2011/1Q	Diff.		2011/2Q	2011/1Q	Diff.
	①	②	①-②		③	④	③-④
Mineral Resources	150	144	6	Mineral Resources	240	233	7
Smelting&Refining	47	166	△ 119	Smelting & Refining	26	149	△ 123
Materials	3	18	△ 15	Materials	△ 7	13	△ 20
Others	0	△ 3	3	Others	6	△ 1	7
Sub-Total	200	325	△ 125	Diff. Adjustment	△ 26	△ 18	△ 8
Headquarter Exp.etc.	△ 30	△ 44	14	Recurring Profit	239	376	△ 137
Total	170	281	△ 111				

<<Explanation of Diff.>>

1. Mineral Resources

JPY100M

Division	Diff.	Quantity	Price	Exchange	Cost@	Others
Hishikari (Au)	21	13	11	△ 4	2	△ 1
Pogo (Au)	△ 1	△ 2	7		△ 3	△ 3
Morenci/NP (Cu)	△ 13					
Others	△ 1					
Op. income Total	6					

Au Sales (t)	2011/2Q	2011/1Q	Diff.
Hishikari	2.3	2.0	0.3
Pogo(100%)	2.6	2.8	△ 0.2

2. Smelting & Refining

JPY100M

	Diff.	Quantity	Price	Cost@	Inventory	Others
Copper	△ 61	△ 3	1	△ 1	△ 50	△ 8
Nickel	△ 64	△ 5	△ 23	△ 8	△ 24	△ 4
Zinc/Lead	△ 1				△ 4	3
Others	7					7
Op. income Total	△ 119	△ 8	△ 22	△ 9	△ 78	△ 2

•Inventory evaluation P&L 2011/2Q △ 57 (JPY100M) (Copper△35、Nickel△19、Zinc△3)
 2011/1Q 21 (JPY100M) (Copper15、Nickel 5、Zinc 1)

Comparison 【FY2011/2Q vs FY2011/1Q】

3. Materials

【Net Sales, by products】

JPY100M

	2011/2Q ①	2011/1Q ②	Diff. ①-②
Semiconductor①CuPI・COF・LF・FW	268	281	△ 13
Semiconductor②PWB・Terminals・Recycle	111	100	11
Advanced①Alloy・Film materials・Crystals	80	90	△ 10
Advanced②Battery・Magnet・Ink・Rare metals	30	22	8
Total	489	493	△ 4

Equity in earnings of affiliated companies

JPY100M

		2011/2Q ①	2011/1Q ②	Diff. ①-②
Cu	Cerro Verde	68	54	14
	Candelaria/Ojos	28	40	△ 12
	Acids/Jinlong /MSMMBC	1	4	△ 3
	Total	97	98	△ 1
Ni	PT Inco	22	19	3
	Figesbal/NAC/Goro	△ 11	△ 6	△ 5
	Total	11	13	△ 2
NECC/NK/MSZ etc.		4	4	0
Total		112	115	△ 3
Segment	Mineral Resources	96	94	2
	Smelting & Refining	8	17	△ 9
	Others	8	4	4
Total		112	115	△ 3

Comparison 【2011/1H Forecast in Nov. vs Forecast in May】

3. Materials

【Net Sales, by products】

JPY100M

	Forecast in Nov. ①	Forecast in May ②	Diff. ①-②
Semiconductor①CuPI・COF・LF・FW	1,100	1,140	△ 40
Semiconductor②PWB・Terminals・Recycle	410	410	0
Advanced①Alloy・Film materials・Crystals	340	390	△ 50
Advanced②Battery・Magnet・Ink・Rare metals	110	100	10
Total	1,960	2,040	△ 80

Equity in earnings of affiliated companies

JPY100M

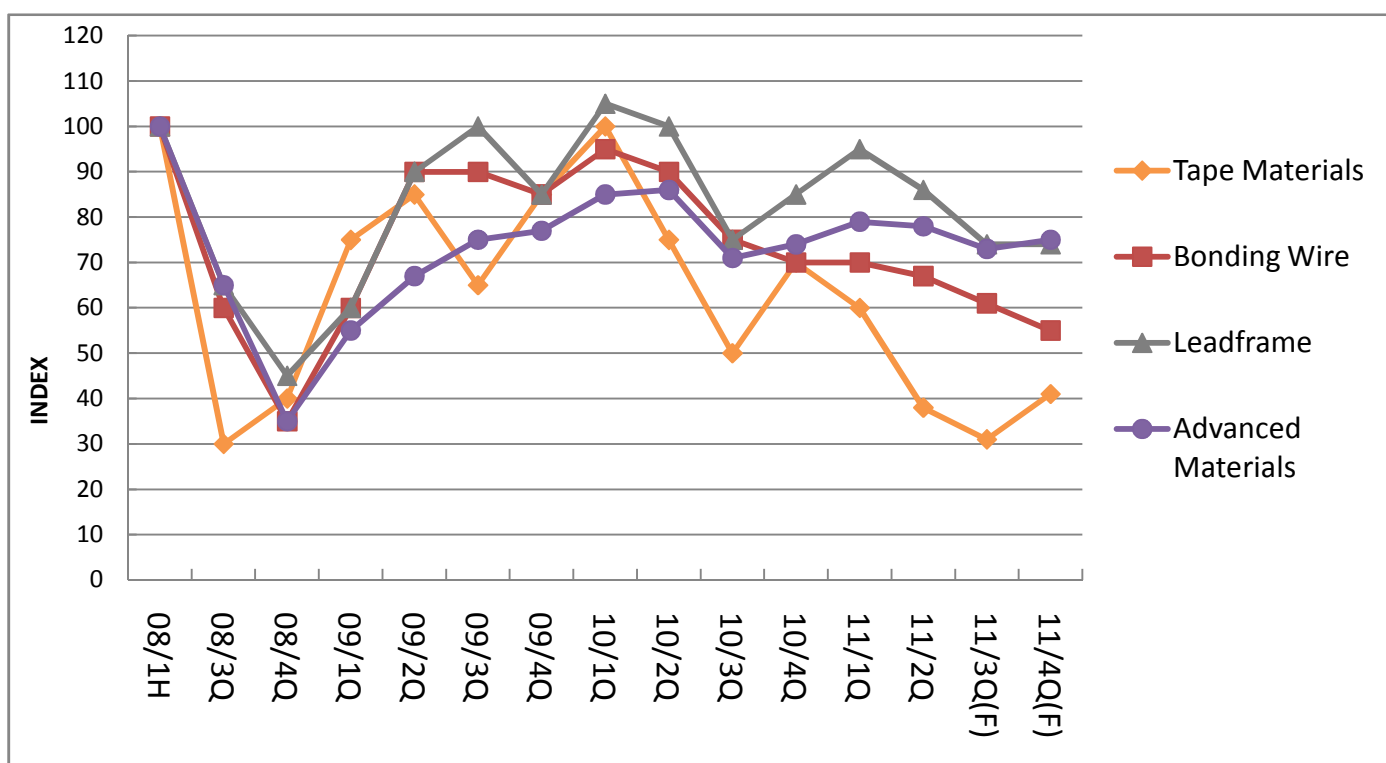
		Forecast in Nov. ①	Forecast in May ②	Diff. ①-②
Cu	Cerro Verde	190	170	20
	Candelaria/Ojos	110	90	20
	Acids/Jinlong /MSMMBC	10	10	0
	Total	310	270	40
Ni	PT Inco	60	80	△ 20
	Figesbal/NAC/Goro	△ 60	△ 40	△ 20
	Total	0	40	△ 40
NECC/NK/MSZ etc.		20	30	△ 10
Total		330	340	△ 10
Segment	Mineral Resources	300	260	40
	Smelting & Refining	10	50	△ 40
	Others	20	30	△ 10
Total		330	340	△ 10

Sales trend of Semiconductor Materials and Advanced Materials

(Index FY2008/1H=100)

	FY2008(Result)			FY2009(Result)			
	08/1H	08/3Q	08/4Q	09/1Q	09/2Q	09/3Q	09/4Q
Tape Materials (Sales)	100	30	40	75	85	65	85
Bonding Wire (Sales Volume)	100	60	35	60	90	90	85
Leadframe (Sales)	100	65	45	60	90	100	85
Advanced Materials (Sales)	100	65	35	55	67	75	77

	FY2010(Result)				FY2011			
	10/1Q	10/2Q	10/3Q	10/4Q	11/1Q	11/2Q	11/3Q(FCST)	11/4Q(FCST)
Tape Materials (Sales)	100	75	50	70	60	38	31	41
Bonding Wire (Sales Volume)	95	90	75	70	70	67	61	55
Leadframe (Sales)	105	100	75	85	95	86	74	74
Advanced Materials (Sales)	85	86	71	74	79	78	73	75



Production/Sales trend of Mineral resources / Smelting & Refining

		FY2009					FY2010					FY2011					Diff. ②-①
		Result					Result					Result		FCST in Nov.	in May		
		1Q	2Q	3Q	4Q	Total	1Q	2Q	3Q	4Q	Total ①	1Q	2Q	2H	Total ②	Plan (Total)	
(Gold Mine) (t)																	
Hishikari	Production	2.6	1.3	1.1	1.8	6.8	2.8	1.9	1.4	1.6	7.7	2.0	3.2	2.3	7.5	7.5	-0.2
	Sales	3.0	1.4	1.3	1.8	7.5	2.0	2.4	1.7	1.4	7.5	2.0	2.3	3.2	7.5	7.5	0.0
Pogo	Production	2.8	3.1	3.3	2.9	12.1	2.9	2.5	3.2	3.4	12.0	2.5	2.5	5.4	10.4	11.6	-1.6
	Sales	2.7	3.1	3.3	2.8	11.9	2.9	2.7	3.1	3.2	11.9	2.8	2.6	5.3	10.7	11.6	-1.2
(Copper Mine) (kt)																	
Morenci	Production	60	55	57	55	227	52	61	58	62	233	65	72	150	287	281	54.0
	Sales	60	55	57	55	227	52	61	49	46	208	63	76	136	275	270	67.0
La Candelaria	Production	36	36	30	32	134	25	28	46	37	136	36	35	76	147	151	11.0
	Sales	40	41	33	36	150	30	31	51	40	152	36	38	72	146	151	-6.0
Ojos Del Salade	Production	7	9	10	8	34	7	8	7	8	30	7	6	13	26	27	-4.0
	Sales	7	9	10	8	34	7	8	7	8	30	6	6	14	26	27	-4.0
Cerro Verde	Production	76	77	73	74	300	75	75	75	78	303	79	77	138	294	294	-9.0
	Sales	76	77	73	77	303	75	75	75	78	303	77	78	139	294	294	-9.0
North Parkes	Production	8	10	8	8	34	9	9	10	11	39	12	12	25	49	46	10.0
	Sales	3	9	8	12	32	7	7	10	14	38	7	14	24	45	46	7.0
Batu Hijau	Production	37	52	63	72	224	66	60	65	54	245	40	26	58	124	123	-121.0
	Sales	45	50	66	73	234	65	53	69	44	231	43	30	56	129	138	-102.0
(Smelting & Refining in Japan) (kt)																	
E-Cu	Production	104.4	90.8	93.8	106.8	395.8	102.6	101.2	100.0	100.3	404.1	85.5	72.8	195.7	354.0	354.0	-50.1
	Sales	110.6	99.8	99.7	100.6	410.7	109.7	102.4	106.6	92.3	411.0	99.6	94.1	203.9	397.6	397.6	-13.4
E-Ni	Production	6.5	7.5	9.9	10.0	33.9	9.9	10.5	9.8	11.1	41.3	9.5	10.6	20.9	41.0	41.0	-0.4
	Sales	8.1	7.8	9.4	11.1	36.4	9.8	10.2	10.1	10.4	40.5	10.0	11.9	22.9	44.8	43.5	4.3
FeNi	Production	5.7	5.7	4.4	4.9	20.7	3.3	4.1	5.4	5.9	18.7	4.8	5.3	11.4	21.5	22.3	2.8
	Sales	5.1	4.9	5.4	4.6	20.0	5.0	5.3	5.1	5.6	20.9	5.2	5.3	10.8	21.3	21.9	0.4
(Smelting & Refining overseas) (kt)																	
CBNC MS	Production	3.0	4.1	5.4	4.5	17.0	5.6	2.7	4.7	6.4	19.4	5.6	5.1	11.9	22.6	23.0	3.2
(Ni content)	Sales	2.8	4.3	4.7	5.0	16.8	5.0	3.6	3.2	7.0	18.8	5.5	3.6	13.6	22.7	23.1	3.9
PT INCO Matte	Production	16.2	16.3	17.8	17.0	67.3	19.8	18.2	20.0	18.0	76.0	16.5	18.6	35.4	70.5	69.4	-5.5
(Ni content)	Sales	14.6	17.4	18.7	17.1	67.8	18.0	20.0	20.7	18.3	77.0	15.7	19.4	36.9	72.0	69.4	-5.0

Sensitivity

JPY 100M Per Year

	Change	Profit up・down	
		Forecast in Nov.	Forecast in May
Cu	±100 \$ /t	5/10	5/10
Ni	±10 ¢ /lb	7/9	7/9
Au	±10 \$ /Toz	4/4	4/4
¥ / \$	±1 ¥/\$	12/12	12/12

(Remark)

Operating income/Recurring profit

USD/JPY translation applied to RC-related only.

Financial Position

【Shareholder's Equity Ratio】

JPY 100M

End of FY	FY2007	FY2008	FY2009	FY2010	2011/1Q	09 3-Yr Plan 2012
Net assets	10,918	8,800	9,815	10,524	11,286	11,200
Shareholder's equity	5,896	5,046	5,866	6,301	6,505	6,740
Shareholder's Equity Ratio	54.0%	57.3%	59.8%	59.9%	57.6%	60%

【D/E Ratio】

JPY 100M

End of FY	FY2007	FY2008	FY2009	FY2010	2011/1Q	09 3-Yr Plan 2012
Interest-bearing debt	2,581	2,185	2,009	2,110	2,646	2,740
Shareholder's equity	5,896	5,046	5,869	6,301	6,505	6,740
D/E ratio	0.44	0.43	0.34	0.33	0.41	0.4

【Dividend payout ratio】

End of FY	FY2007	FY2008	FY2009	FY2010	09 3-Yr Plan 2012
Dividend / share (JPY)	30.0	13.0	20.0	32.0	-
Net Income / share (JPY)	238.13	38.87	96.26	149.38	-
Dividend payout ratio	12.6%	33.4%	20.8%	21.4%	20%+

Consolidated companies (62) / Equity-method affiliated companies (15)

at September 30, 2011

Mineral Resources

	Voting Shares	Location	Operations
Consolidated companies			
Sumiko Resources Exploration & Development Co., Ltd	100	Japan	Geological survey of resources; Test boring
Sumitomo Metal Mining America	100	USA	Exploration; Management of mining subsidiaries in USA.
Sumitomo Metal Mining Arizona	80	USA	Mining and related operations
SMMA Candelaria Inc.	100	USA	Investment in local company in Chile operating Candelaria Mine
Sumitomo Metal Mining Canada Ltd.	100	Canada	Exploration, Consulting
Sumitomo Metal Mining Oceania	100	Australia	Resource surveys, mine development and related operations in Oceania
Sumitomo Metal Mining Pogo LLC	100	USA	Investment in Pogo Mine
SMM Resources	100	Canada	Mineral Resources Business
SMM Cerro Verde Netherlands B.V.	80	Netherlands	Investments in local Peruvian companies engaged in the Cerro Verde Mine operation
SMM Exploration Corporation	100	USA	Mineral Resources Business
SMM Solomon Limited	70	Solomon Islands	Exploration in Solomons Islands
Sumitomo Metal Mining Peru S.A	100	Peru	Exploration in South America
Sumitomo Metal Mining Chile LTDA.	100	Chile	Exploration in South America
Sumiko Solomon Exploration Co., Ltd.	70	Japan	Exploration in Solomons Islands
SUMAC MINES LTD.	100	Canada	Exploration
Stone Boy Inc.	80	USA	Exploration
SMM Sierra Gorda Inversiones Ltda.	70	Chile	Investment in Sierra Gorda Project
Equity-method affiliated companies			
Sociedad Minera Cerro Verde S.A.A	21	Peru	Cerro Verde Mine
Compania Contractual Minera Candelaria	20	Chile	Candelaria Mine
Compania Contractual Minera Ojos del Salado	20	Chile	Ojos del Salade Mine
Sierra Gorda SCM	45	Chile	Sierra Gorda Mine

Smelting & Refining

	Voting Shares	Location	Operations
Consolidated companies			
Hyuga Smelting Co., Ltd	60	Japan	Ferro-nickel smelting
Shisaka Smelting Co.,Ltd.	100	Japan	Manufacture of crude zinc oxide
Sumiko Logistics Co., Ltd.	100	Japan	Maritime trading; Harbor transportation and services; Land Transportation
SUMIC Nickel Netherlands b.v.	52	Netherlands	Investment in nickel and cobalt development businesses; Sale of nickel and cobalt
Coral Bay Nickel Corporation	54	Philippines	Manufacture of nickel and cobalt
Taganito HPAL Nickel Corporation	62.5	Philippines	Taganito Project
Sumitomo Metal Mining Philippine Holdings Corporation	100	Philippines	Regional headquarters for the nickel business
Sumiko Business Consulting(Shanghai) Co., Ltd.	100	China	Business consulting
Taihei Metal Industry Co., Ltd.	97	Japan	Manufacture of heat-, corrosion- and friction-resistant steel castings and precision castings
Equity-method affiliated companies			
Jinlong Copper Co., Ltd.	27	China	Manufacture and sale of electrolytic copper and sulfuric acid
Acids Co., Ltd.	50	Japan	Manufacture and sale of sulfuric acid and related products
P.T.International Nickel Indonesia	20	Indonesia	Nickel ore mining; Nickel smelting
Nickel Asia Corporation	25	Philippines	Nickel ore mining
FIGESBAL	26	New Caledonia	Nickel ore mining; Harbor transportation
Vale New-Caledonia S.A.S.	21	France	Goro Mine
MS Zinc Co., Ltd.	50	Japan	Manufacture and sale of zinc and related operations
Mitsui Sumitomo Metal Mining Brass & Copper Co.,Ltd	50	Japan	Manufacture and sale of copper and brass products and processed copper and brass products

Materials

	Voting Shares	Location	Operations
Consolidated companies			
Okuchi Electronics Co., Ltd.	100	Japan	Lead frame etching and plating/ Manufacture of Bonding wire and functional inks/Recovery and recycling of non-ferrous metals
Niihama Electronics Co., Ltd.	100	Japan	Manufacture of semiconductor leadframes and flexible circuit materials
Shinko Co., Ltd.	94	Japan	Design, manufacture, and sale of printed circuit boards
Sumitomo Metal Mining Asia Pacific Pte.Ltd.	100	Singapore	Regional headquarters for international lead frame operations
Malaysian Electronics Materials SDN. BHD.	100	Malaysia	Manufacture and sale of bonding wire and thick-film paste
M-SMM Electronics SDN.BHD	100	Malaysia	Manufacture and sale of leadframes
Sumiko Electronics Taiwan Co.,Ltd.	70	Taiwan	Manufacture and sale of leadframes and tape materials
Sumiko Leadframe (Thailand) Co.,Ltd.	100	Thailand	Manufacture and sale of leadframes
Sumiko Leadframe Chengdu Co., Ltd.	85	China	Manufacture and sale of leadframes
Sumiko Precision Chengdu Co., Ltd	70	China	Manufacture of leadframes
Sumiko Electronics Suzhou Co., Ltd.	100	China	Manufacture and sale of semiconductor package materials
Sumitomo Metal Mining Electronics Materials(Shanghai) Co., Ltd.	100	China	Manufacture and sale of bonding wire
SumikoTec Co., Ltd.	100	Japan	Terminals and connectors for electronic and electric equipment/Components, electric wire, power cords and pressure bonding machines relating to the above and their maintenance/Manufacture and sale of formed products for optical equipment, etc.
Nittosha Co., Ltd.	100	Japan	Plating of metal products, surface treatment processing and distribution / Electromagnetic shielding processing to electronics resin products through a dry plating method
Sumiko Kunitomi Denshi Co., Ltd.	100	Japan	Manufacture of crystal products and magnetic materials
Shanghai Sumiko Electronic Paste Co., Ltd.	51	China	Manufacture and sale of thick-film paste
Dongguan Sumiko Electronic Paste Co., Ltd.	76	China	Manufacture and sale of thick-film paste
SMM KOREA Co.,Ltd.	100	Korea	Sales support for advanced materials and business operations
Taiwan Sumiko Materials Co., Ltd	70	Taiwan	Manufacture of bonding wire
SMM Precision Co., Ltd.	100	Japan	Manufacture and sale of optical communications components
Equity-method affiliated company			
Granopt Ltd.	50	Japan	Manufacture and sale of rare earth iron garnet (RIG)

Others

	Voting Shares	Location	Operations
Consolidated companies			
Sumico Lubricant Co., Ltd.	100	Japan	Manufacture and sale of various lubricants
Sumico Lubricant Trading (Shanghai) Co.,Ltd	100	China	Sale of various lubricants
Sumitomo Metal Mining Siporex Co., Ltd.	100	Japan	Manufacture and sale of ALC (Autoclaved Lightweight aerated Concrete) and other construction materials
JCO Co., Ltd.	100	Japan	Management of facilities using uranium and related wastes
Igeta Heim Co., Ltd.	100	Japan	Construction of steel frame and reinforced concrete apartments and condominiums
Sumiko Techno-Research Co., Ltd.	100	Japan	Environmental measurement verification operations such as water quality, air, soil, noise and vibration, etc. Data collection, adjustment and product evolution as well as technological development
Sumiko Technical Service Co., Ltd	100	Japan	Commission-based work in area of nonferrous smelting/ Personnel agency business
Sumitomo Metal Mining Engineering Co., Ltd.	100	Japan	Nonferrous metal smelting, Chemicals business, Environment sector machinery & equipment, Plant surveys, etc. design, manufacturing and repair & maintenance
Sumiko Plantech Co., Ltd.	100	Japan	Manufacture of machinery & equipment and repair work for nonferrous metal smelting and chemical plants, etc. / Installation of machinery & equipment and piping work / Steel structure work
Japan Irradiation Service Co., Ltd.	100	Japan	Irradiation sterilization service for pharmaceutical products, medical instruments, and pharmaceutical containers,etc., /Modification of various industrial materials
SMM Holland B.V.	100	Netherlands	Investment in nickel and cobalt development businesses
Equity-method affiliated companies			
N. E. Chemcat Corporation	50	Japan	Manufacture of precious metal catalysts and surface treatment chemicals; Recovery and refining of precious metals
Nippon Ketjen Co., Ltd.	50	Japan	Manufacture and sale of desulphurization catalysts for petroleum processing