

Supplementary Explanation for Financial Summary

3rd Quarter FY2011



Sierra Gorda Project

February 7th, 2012

Sumitomo Metal Mining Co., Ltd.

The materials provided herein are not intended as disclosure under the Securities Law, and no warranty is made as to their completeness or accuracy. Any projections included in these materials are based solely on information available at the time of this briefing, and are subject to change based on market conditions, competitive conditions, and a number of other factors. Therefore, we ask that you refrain from making any investment decisions based on these materials alone. The Company cannot be held responsible in any way for any losses that may occur as a result of the use of these materials.

Comparison

FY2011/1-3Q Result vs FY2010/1-3Q Result

JPY100M

	11/1-3Q ①Result	10/1-3Q ②Result	Diff. ①-②	11/3Q ③Result	FCST in Nov ④ 3Q+4Q	Percent Complete ③/④
Net sales	6,421	6,433	△ 12	2,078	3,807	55%
Operating income	621	654	△ 33	170	349	49%
Recurring profit	818	782	36	203	425	48%
Net income	470	561	△ 91	95	295	32%
(Inventory evaluation P&L)	△ 89	11	△ 100	△ 46	△ 46	
(Exchange gain & loss)	△ 37	△ 54	17	5	0	
Cu (\$ /t)	8,544	7,636	908	7,489	8,000	
Ni (\$ /lb)	9.78	10.17	△ 0.39	8.30	9.00	
Au (\$ /oz)	1,630.6	1,263.5	367.1	1,685.5	1,650.0	
Exchange (¥ / \$)	79.02	86.86	△ 7.84	77.41	75.00	

Exchange (¥ / \$)	11/12End	11/9End	11/6End	11/3End	10/12End	10/9End	10/6End	10/3End
	77.74	76.65	80.68	83.15	81.52	83.80	88.52	93.05

【Diff. of 11/1Q-3Q Result vs 10/1Q-3Q Result ①-②】

Recurring profit +36

<Metal Price +144, Decrease of Exchange Loss+17, Cost△71, Materials Segment △57, etc.>

New and Old Forecast FY2011 (in Feb. vs in Nov.)

JPY100M

	1Q+2Q ①Result	3Q ②Result	4Q ③Forecast	FY2011 ④Forecast in Feb.	FY2011 ④Forecast in Nov.	Diff. ④-⑤
Net sales	4,343	2,078	1,839	8,260	8,150	110
Operating income	451	170	179	800	800	0
Recurring profit	615	203	162	980	1,040	△ 60
Net income	375	95	70	540	670	△ 130
(Inventory evaluation P&L)	△ 43	△ 46	△ 12	△ 101	△ 89	△ 12
(Exchange gain & loss)	△ 42	5	△ 1	△ 38	△ 42	4
Cu (\$ /t)	9,072	7,489	8,000	8,408	8,536	△ 128
Ni (\$ /lb)	10.52	8.30	9.00	9.59	9.76	△ 0.17
Au (\$ /oz)	1,603.1	1,685.5	1,700.0	1,648.0	1,626.6	21.4
Exchange (¥ / \$)	79.82	77.41	77.00	78.52	77.41	1.11

【Diff. of Forecast in Feb. vs Forecast in Nov ④-⑤】

Recurring profit △60

Vale New Caledonia△76(Reconsideration of tax effect accounting) , etc.

【Extraordinary losses related to "Structural Transformation"】

JPY100M

Major Revamp of Zinc/Lead Operations at Harima Smelter	55
Withdraw from Bonding wire business	26
Withdraw from lead frame production in Thailand	13
Withdraw from COF subtractive process production	26

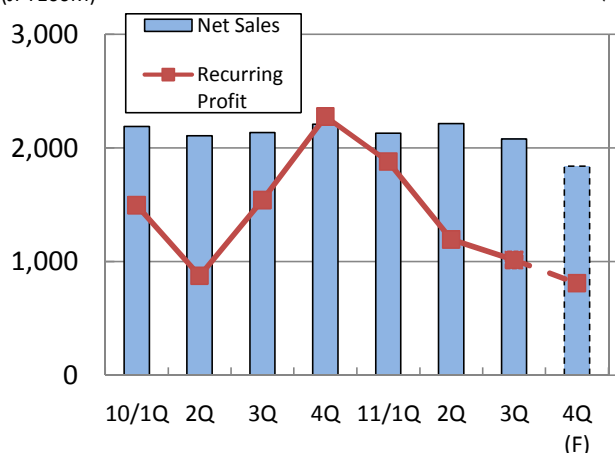
Quarterly financial results

JPY100M

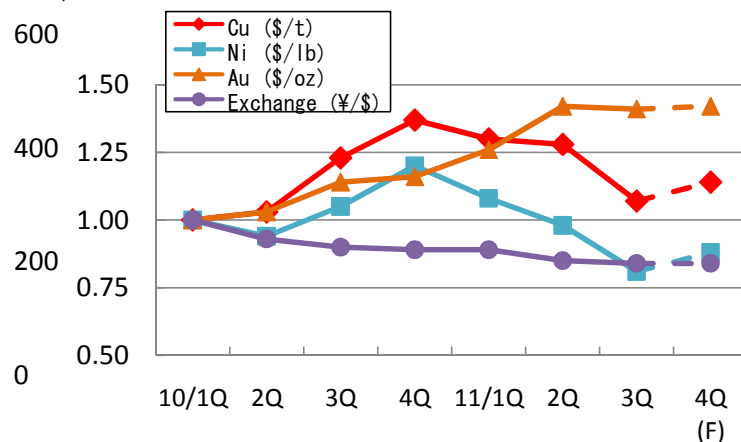
	FY2009 Result				
	1Q	2Q	3Q	4Q	Total
Net sales	1,552	1,707	1,929	2,070	7,258
Operating income	107	126	180	250	663
①Recurring profit	129	149	258	342	878
Net income	66	103	169	202	540
Cu (\$/t)	4,663	5,859	6,648	7,232	6,101
Ni (\$/lb)	5.86	8.02	7.95	9.05	7.72
Au (\$/oz)	922.0	960.1	1,101.6	1,109.6	1,023.3
Exchange (¥/\$)	97.33	93.66	89.72	90.71	92.86
Inventory impairment					
(Smelting) Impairment	25	△ 5	8	4	32
(Smelting) QP Diff etc.	22	21	27	21	91
(Smelting) Total	47	16	35	25	123
(Materials & others)	14	12	2	4	32
②Total	61	28	37	29	155
①-②	68	121	221	313	723

	FY2010 Result					FY2011				
	1Q	2Q	3Q	4Q	Total	1Q	2Q	3Q	4Q FCST	Total FCST
Net sales	2,190	2,107	2,136	2,208	8,641	2,129	2,214	2,078	1,839	8,260
Operating income	294	157	203	306	960	281	170	170	179	800
①Recurring profit	299	175	308	455	1,237	376	239	203	162	980
Net income	202	153	206	279	840	263	112	95	70	540
Cu (\$/t)	7,027	7,243	8,637	9,652	8,140	9,152	8,992	7,489	8,000	8,408
Ni (\$/lb)	10.19	9.61	10.71	12.20	10.68	11.02	10.01	8.30	9.00	9.59
Au (\$/oz)	1,195.4	1,226.8	1,368.5	1,384.6	1,293.8	1,504.7	1,701.6	1,685.5	1,700.0	1,648.0
Exchange (¥/\$)	92.02	85.90	82.65	82.35	85.73	81.75	77.89	77.41	77.00	78.52
Inventory impairment										
(Smelting) Impairment	△ 17	15	2	0	0	△ 12	△ 40	17	32	△ 3
(Smelting) QP Diff etc.	61	△ 55	6	32	44	33	△ 17	△ 59	△ 42	△ 85
(Smelting) Total	44	△ 40	8	32	44	21	△ 57	△ 42	△ 10	△ 88
(Materials & others)	△ 3	2	0	2	1	0	△ 7	△ 4	△ 2	△ 13
②Total	41	△ 38	8	34	45	21	△ 64	△ 46	△ 12	△ 101
①-②	258	213	300	421	1,192	355	303	249	174	1,081

Sales (JPY100M) **Net sales / Recurring profit**



Profit (JPY100M) **Metal Price / Exchange Rate (INDEX: 10/1Q=1.0)**



Segment profit (Operating income / Contribution margin)

JPY100M

	FY2009					FY2010					FY2011				
	1Q	2Q	3Q	4Q	Total	1Q	2Q	3Q	4Q	Total	1Q	2Q	3Q	4Q(FCST)	Total(FCST)
Mineral Resources	74	67	72	96	309	113	108	94	115	430	144	150	124	92	510
Smelting & Refining	74	79	119	145	417	180	38	133	218	569	166	47	57	130	400
Materials	△ 9	13	15	26	45	39	24	7	8	78	18	3	△ 8	△ 3	10
Others	△ 8	3	△ 1	5	△ 1	△ 3	0	7	6	10	△ 3	0	7	6	10
Sub-Total	131	162	205	272	770	329	170	241	347	1,087	325	200	180	225	930
Headquarter Exp. etc.	△ 24	△ 36	△ 25	△ 22	△ 107	△ 35	△ 13	△ 38	△ 41	△ 127	△ 44	△ 30	△ 10	△ 46	△ 130
Operating income Total	107	126	180	250	663	294	157	203	306	960	281	170	170	179	800

	Result					FCST	FY2011
	2006	2007	2008	2009	2010	2011	FCST in Nov.
Mineral Resources	337	383	179	309	430	510	530
Smelting & Refining	1,181	1,174	107	417	569	400	370
Materials	152	98	△ 87	45	78	10	10
Others	63	37	6	△ 1	10	10	0
Sub-Total	1,733	1,692	205	770	1,087	930	910
Headquarter Exp. etc.	△ 107	△ 138	△ 100	△ 107	△ 127	△ 130	△ 110
Operating income Total	1,626	1,554	105	663	960	800	800

	FY2010					FY2011					FY2011	
	1Q	2Q	3Q	4Q	Total	1Q	2Q	3Q	4Q(FCST)	Total(FCST)	FCST in Nov.	
Contribution Margin	Mineral Resources	169	141	181	213	704	233	240	155	152	780	810
	Smelting & Refining	124	4	131	236	495	149	26	7	8	190	260
	Materials	32	18	△ 1	5	54	13	△ 7	△ 13	△ 13	△ 20	△ 20
	Others	2	7	8	6	23	△ 1	6	10	15	30	10
Diff. Adjustment	△ 28	5	△ 11	△ 5	△ 39	△ 18	△ 26	44	0	0	△ 20	
Recurring Profit Total	299	175	308	455	1,237	376	239	203	162	980	1,040	

Equity in earnings of affiliated companies

JPY100M

	FY2009					FY2010					FY2011					
	1Q	2Q	3Q	4Q	Total	1Q	2Q	3Q	4Q	Total	1Q	2Q	3Q	4Q(FCST)	Total(FCST)	
Cu	Cerro Verde	17	30	33	49	129	39	26	51	66	182	54	68	32	36	190
	Candelaria/Ojos	11	21	20	26	78	17	12	40	31	100	40	28	15	27	110
	Acids/Jinlong/MSMMBC	3	6	4	0	13	2	2	2	6	12	4	1	△ 5	10	10
	Total	31	57	57	75	220	58	40	93	103	294	98	97	42	73	310
Ni	PT Inco	4	3	13	11	31	15	24	19	16	74	19	22	12	7	60
	Figesbal/NAC/Goro	△ 3	△ 9	△ 12	△ 1	△ 25	△ 35	△ 35	2	17	△ 51	△ 6	△ 11	△ 18	△ 105	△ 140
	Total	1	△ 6	1	10	6	△ 20	△ 11	21	33	23	13	11	△ 6	△ 98	△ 80
NECC/NK/MSZ/etc.	2	9	13	11	35	3	8	12	8	31	4	4	△ 1	3	10	
Total	34	60	71	96	261	41	37	126	144	348	115	112	35	△ 22	240	

	Result					FCST	FY2011	
	2006	2007	2008	2009	2010	2011	FCST in Nov.	
Cu	Cerro Verde	107	180	158	129	182	190	190
	Candelaria/Ojos	143	168	86	77	100	110	110
	Acids/Jinlong/MSMMBC	29	22	0	13	12	10	10
	Total	279	370	244	219	294	310	310
Ni	PT Inco	113	274	87	31	74	60	60
	Figesbal/NAC/Goro	8	11	△ 18	△ 25	△ 51	△ 140	△ 60
	Total	121	285	69	6	23	△ 80	0
NECC/NK/MSZ/etc.	67	85	2	36	31	10	20	
Total	467	740	315	261	348	240	330	

Metal price and Exchange rate

	Copper (\$/t)			Copper (¢/lb)			Nickel (\$/lb)		
	FY2009	FY2010	FY2011	FY2009	FY2010	FY2011	FY2009	FY2010	FY2011
Apr	4,407	7,745	9,483	200	351	430	5.06	11.81	11.94
May	4,569	6,838	8,927	207	310	405	5.73	9.98	10.98
Jun	5,014	6,499	9,045	227	295	410	6.79	8.79	10.14
Average	4,663	7,027	9,152	212	319	415	5.86	10.19	11.02
Jul	5,216	6,735	9,619	237	306	436	7.25	8.85	10.76
Aug	6,165	7,284	9,041	280	330	410	8.91	9.71	10.02
Sep	6,196	7,709	8,315	281	350	377	7.93	10.27	9.25
Average	5,859	7,243	8,992	266	329	408	8.02	9.61	10.01
Oct	6,288	8,292	7,348	285	376	333	8.40	10.80	8.57
Nov	6,676	8,470	7,552	303	384	343	7.71	10.39	8.11
Dec	6,982	9,147	7,568	317	415	343	7.74	10.94	8.23
Average	6,648	8,637	7,489	302	392	340	7.95	10.71	8.30
Jan	7,386	9,556		335	433		8.36	11.63	
Feb	6,848	9,868		311	448		8.61	12.82	
Mar	7,463	9,531		339	432		10.19	12.16	
Average	7,232	9,652		328	438		9.05	12.20	
FY average	6,101	8,140	8,544	277	369	388	7.72	10.68	9.78
Jan-Dec average	5,150	7,535	8,821	234	342	400	6.65	9.89	10.38
FY2011FCST									
1-3FCST			8,000			363			9.00
10-3FCST in Nov.			8,000			363			9.00

	Gold (\$/oz)			Zinc (\$/t)			Exchange (¥/US\$)		
	FY2009	FY2010	FY2011	FY2009	FY2010	FY2011	FY2009	FY2010	FY2011
Apr	891.4	1,148.6	1,474.1	1,379	2,367	2,372	99.12	93.42	83.45
May	927.8	1,204.9	1,511.3	1,484	1,968	2,160	96.29	91.71	81.24
Jun	946.7	1,232.7	1,528.5	1,557	1,743	2,230	96.58	90.93	80.56
Average	922.0	1,195.4	1,504.7	1,473	2,026	2,254	97.33	92.02	81.75
Jul	934.3	1,194.5	1,570.7	1,579	1,844	2,391	94.52	87.75	79.52
Aug	949.4	1,214.6	1,757.7	1,822	2,045	2,212	94.92	85.50	77.28
Sep	996.5	1,271.2	1,776.3	1,884	2,151	2,077	91.55	84.46	76.88
Average	960.1	1,226.8	1,701.6	1,761	2,013	2,227	93.66	85.90	77.89
Oct	1,043.3	1,342.6	1,666.6	2,072	2,372	1,859	90.37	81.94	76.75
Nov	1,126.6	1,370.8	1,737.5	2,193	2,292	1,916	89.22	82.55	77.60
Dec	1,134.9	1,392.0	1,652.5	2,376	2,281	1,916	89.58	83.46	77.88
Average	1,101.6	1,368.5	1,685.5	2,214	2,315	1,897	89.72	82.65	77.41
Jan	1,118.8	1,358.4		2,434	2,372		91.22	82.67	
Feb	1,095.6	1,372.0		2,157	2,465		90.38	82.55	
Mar	1,114.5	1,423.4		2,275	2,349		90.54	81.82	
Average	1,109.6	1,384.6		2,289	2,395		90.71	82.35	
FY average	1,023.3	1,293.8	1,630.6	1,934	2,187	2,126	92.86	85.73	79.02
Jan-Dec average	973.0	1,225.1	1,569.1	1,665	2,161	2,193	93.59	87.82	79.85
FY2011FCST									
1-3FCST			1,700			1,900			77.00
10-3FCST in Nov.			1,650			2,000			75.00

LME Price	FY2010		11/1Q		11/2Q		11/3Q		11/4QFCST
E-Ni applied	10.52	Mar-May	11.63	Jun-Aug	10.31	Sep-Nov	8.64	Dec-Feb	8.74
Fe-Ni applied	9.89	Jan-Mar	12.20	Apr-Jun	11.02	Jul-Sep	10.01	Oct-Dec	8.30

Exchange	FY2010		11/1Q		11/2Q		11/3Q		11/4QFCST
E-Ni applied	86.46	Mar-May	82.17	Jun-Aug	79.12	Sep-Nov	77.08	Dec-Feb	77.29
Fe-Ni applied	87.82	Jan-Mar	82.35	Apr-Jun	81.75	Jul-Sep	77.89	Oct-Dec	77.41

Comparison 【FY2011/1-3Q vs FY2010/1-3Q】

JPY100M

Operating income				Contribution margin			
	11/1-3Q	10/1-3Q	Diff.		11/1-3Q	10/1-3Q	Diff.
	①	②	①-②		③	④	③-④
Mineral Resources	418	315	103	Mineral Resources	628	491	137
Smelting & Refining	270	351	△ 81	Smelting & Refining	182	259	△ 77
Materials	13	70	△ 57	Materials	△ 7	49	△ 56
Others	4	4	0	Others	15	17	△ 2
Sub-Total	705	740	△ 35	Diff. Adjustment	0	△ 34	34
Headquarter Exp.etc.	△ 84	△ 86	2	Recurring Profit	818	782	36
Total	621	654	△ 33				

<<Explanation of Diff.>>

1. Mineral Resources

JPY100M

Division	Diff.	Quantity	Price	Exchange	Cost@	Others
Hishikari (Au)	36	△ 2	53	△ 18	3	0
Pogo (Au)	12	△ 11	68	△ 11	△ 26	△ 8
Morenci/NP (Cu)	46					
Others	9					
Op. income Total	103					

Au Sales (t)	11/1-3Q	10/1-3Q	Diff.
Hishikari	5.9	6.1	△ 0.2
Pogo(100%)	7.9	8.7	△ 0.8

2. Smelting & Refining

JPY100M

	Diff.	Quantity	Price	Cost@	Inventory	Others
Copper	△ 40	△ 16	△ 5	△ 8	△ 27	16
Nickel	△ 56	24	6	△ 8	△ 62	△ 16
Zinc/Lead	△ 1	△ 1		3	△ 1	△ 2
Others	16					16
Op. income Total	△ 81	7	1	△ 13	△ 90	14

•Inventory evaluation P&L 11/1-3Q △ 78 (JPY100M) (Cu △48, Ni △29, Zn △1)
 10/1-3Q 12 (JPY100M) (Cu △21, Ni +33, Zn ±0)

Comparison 【FY2011/1-3Q vs FY2010/1-3Q】

3. Materials

【Net Sales, by products】

JPY100M

	2011/1-3Q ①	2010/1-3Q ②	Diff. ①-②
Semiconductor①CuPI・COF・LF・FW	750	929	△ 179
Semiconductor②PWB・Terminals・Recycle	334	300	34
Advanced①Alloy・Film materials・Crystals	237	283	△ 46
Advanced②Battery・Magnet・Ink・Rare metals	83	74	9
Total	1,404	1,586	△ 182

Equity in earnings of affiliated companies

JPY100M

	会社名	2011/1-3Q ①	2010/1-3Q ②	Diff. ①-②
Cu	Cerro Verde	154	116	38
	Candelaria/Ojos	83	69	14
	Acids/Jinlong /MSMMBC	0	5	△ 5
	Total	237	190	47
Ni	PT Vale Indonesia	53	58	△ 5
	Figesbal/NAC/Goro	△ 35	△ 67	32
	Total	18	△ 9	27
NECC/NK/MSZ etc.		7	23	△ 16
Total		262	204	58
Segment	Mineral Resources	237	185	52
	Smelting & Refining	6	△ 2	8
	Others	19	21	△ 2
Total		262	204	58

Comparison 【FY2011/3Q vs FY2011/2Q】

JPY100M

Operating income				Contribution margin			
	2011/3Q	2011/2Q	Diff.		2011/3Q	2011/2Q	Diff.
	①	②	①-②		①	②	③-④
Mineral Resources	124	150	△ 26	Mineral Resources	155	240	△ 85
Smelting & Refining	57	47	10	Smelting & Refining	7	26	△ 19
Materials	△ 8	3	△ 11	Materials	△ 13	△ 7	△ 6
Others	7	0	7	Others	10	6	4
Sub-Total	180	200	△ 20	Diff. Adjustment	44	△ 26	70
Headquarter Exp.etc.	△ 10	△ 30	20	Recurring Profit	203	239	△ 36
Total	170	170	0				

<<Explanation of Diff.>>

1. Mineral Resources

JPY100M

Division	Diff.	Quantity	Price	Exchange	Cost@	Others
Hishikari (Au)	△ 39	△ 35	△ 1	0	△ 3	0
Pogo (Au)	6	△ 1	11	△ 2	△ 2	0
Morenci/NP (Cu)	0					
Others	7					
Op. income Total	△ 26					

Au Sales (t)	2011/3Q	2011/2Q	Diff.
Hishikari	1.6	2.3	△ 0.7
Pogo(100%)	2.5	2.6	△ 0.1

2. Smelting & Refining

JPY100M

	Diff.	Quantity	Price	Cost@	Inventory	Others
Copper	△ 2	0	△ 13	△ 5	7	9
Nickel	4	13	△ 20	8	4	△ 1
Zinc/Lead	3	△ 1		3	4	△ 3
Others	5					5
Op. income Total	10	12	△ 33	6	15	10

・Inventory evaluation P&L 2011/3Q △ 42 (JPY100M) (Cu △28、Ni △15、Zn +1)
 2011/2Q △ 57 (JPY100M) (Cu △35、Ni △19、Zn △3)

Comparison 【FY2011/3Q vs FY2011/2Q】

3. Materials

【Net Sales, by products】

JPY100M

	2011/3Q ①	2011/2Q ②	Diff. ①-②
Semiconductor①CuPI・COF・LF・FW	202	268	△ 66
Semiconductor②PWB・Terminals・Recycle	124	111	13
Advanced①Alloy・Film materials・Crystals	67	80	△ 13
Advanced②Battery・Magnet・Ink・Rare metals	30	30	0
Total	423	489	△ 66

Equity in earnings of affiliated companies

JPY100M

		2011/3Q ①	2011/2Q ②	Diff. ①-②
Cu	Cerro Verde	32	68	△ 36
	Candelaria/Ojos	15	28	△ 13
	Acids/Jinlong /MSMMBC	△ 5	1	△ 6
	Total	42	97	△ 55
Ni	PT Vale Indonesia	12	22	△ 10
	Figesbal/NAC/Goro	△ 18	△ 11	△ 7
	Total	△ 6	11	△ 17
NECC/NK/MSZ etc.		△ 1	4	△ 5
Total		35	112	△ 77
Segment	Mineral Resources	47	96	△ 49
	Smelting & Refining	△ 18	8	△ 26
	Others	6	8	△ 2
Total		35	112	△ 77

Comparison 【2011 Forecast in Feb. vs Forecast in Nov】

JPY100M

FY2011 Operating income				FY2011 Contribution margin			
	Forecast in Feb.①	Forecast in Nov ②	Diff. ①-②		Forecast in Feb.③	Forecast in Nov ④	Diff. ③-④
Mineral Resources	510	530	△ 20	Mineral Resources	780	810	△ 30
Smelting & Refining	400	370	30	Smelting & Refining	190	260	△ 70
Materials	10	10	0	Materials	△ 20	△ 20	0
Others	10	0	10	Others	30	10	20
Sub-Total	930	910	20	Diff. Adjustment	0	△ 20	20
Headquarter Exp.etc.	△ 130	△ 110	△ 20	Recurring Profit	980	1,040	△ 60
Total	800	800	0				

<<Explanation of Diff.>>

1. Mineral Resources

JPY100M

Division	Diff.	Quantity	Price	Exchange	Cost@	Others
Hishikari (Au)	5	0	4	4	△ 3	0
Pogo (Au)	△ 9	△ 5	2	2	△ 7	△ 1
Morenci/NP (Cu)	△ 17					
Others	1					
Op. income Total	△ 20					

Au Sales (t)	FCST in Feb	FCST in Nov	Diff.
Hishikari	7.5	7.5	0.0
Pogo(100%)	10.4	10.7	△ 0.3

2. Smelting & Refining

JPY100M

	Diff.	Quantity	Price	Cost@	Inventory	Others
Copper	△ 1	4	△ 10	△ 11	4	12
Nickel	21	△ 4	32	6	△ 10	△ 3
Zinc/Lead	△ 2	0	0	1	0	△ 3
Others	12					12
Op. income Total	30	0	22	△ 4	△ 6	18

•Inventory evaluation P&L FCST in Feb △ 88 (JPY100M) (Cu △45, Ni △43)
FCST in Nov △ 82 (JPY100M) (Cu △49, Ni △33)

Comparison 【2011 Forecast in Feb. vs Forecast in Nov】

3. Materials

【Net Sales, by products】

JPY100M

	Forecast in Feb. ①	Forecast in Nov. ②	Diff. ①-②
Semiconductor①CuPI・COF・LF・FW	960	1,100	△ 140
Semiconductor②PWB・Terminals・Recycle	430	410	20
Advanced①Alloy・Film materials・Crystals	300	340	△ 40
Advanced②Battery・Magnet・Ink・Rare metals	110	110	0
Total	1,800	1,960	△ 160

Equity in earnings of affiliated companies

JPY100M

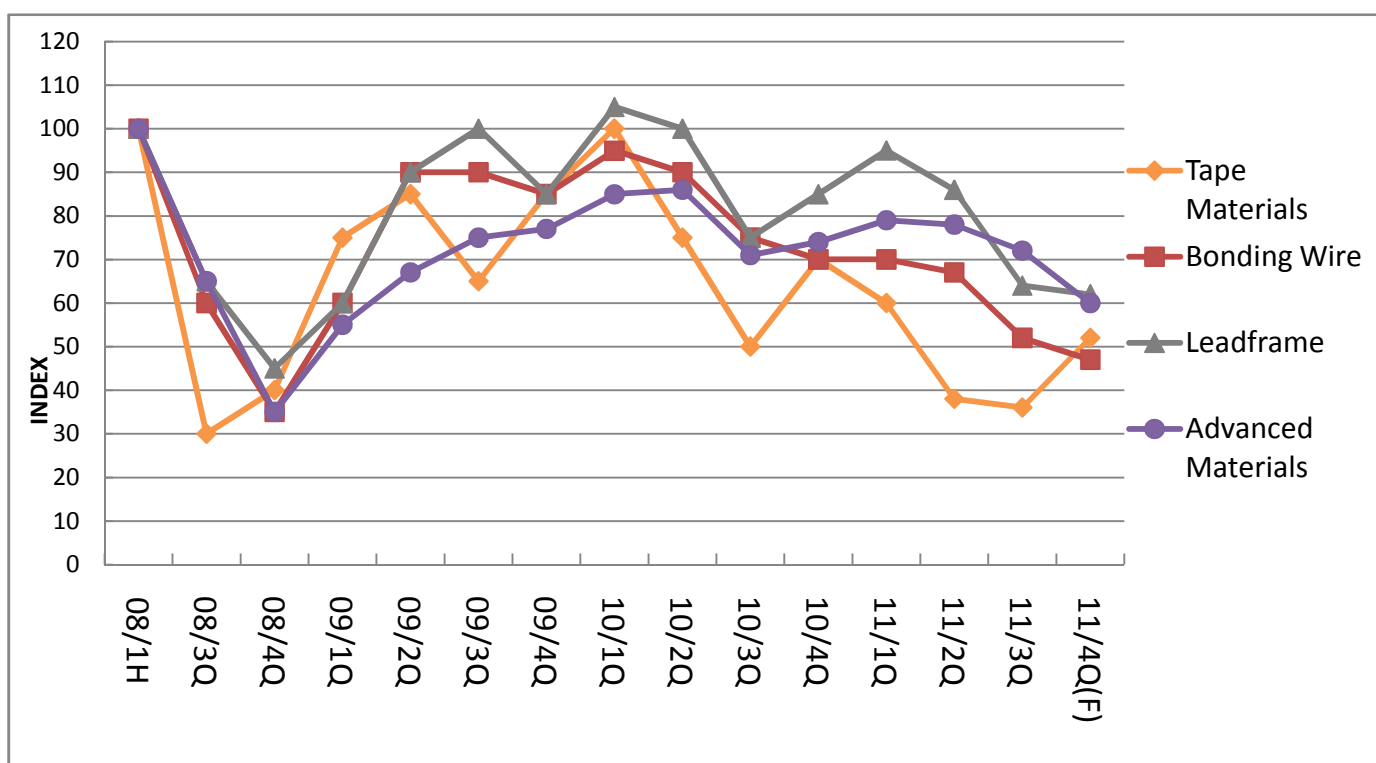
		Forecast in Feb. ①	Forecast in Nov. ②	Diff. ①-②
Cu	Cerro Verde	190	190	0
	Candelaria/Ojos	110	110	0
	Acids/Jinlong /MSMMBC	10	10	0
	Total	310	310	0
Ni	PT Vale Indonesia	60	60	0
	Figesbal/NAC/Goro	△ 140	△ 60	△ 80
	Total	△ 80	0	△ 80
NECC/NK/MSZ etc.		10	20	△ 10
Total		240	330	△ 90
Segment	Mineral Resources	300	300	0
	Smelting & Refining	△ 90	10	△ 100
	Others	30	20	10
Total		240	330	△ 90

Sales trend of Semiconductor Materials and Advanced Materials

(Index FY2008/1H=100)

	FY2008(Result)			FY2009(Result)			
	08/1H	08/3Q	08/4Q	09/1Q	09/2Q	09/3Q	09/4Q
Tape Materials (Sales)	100	30	40	75	85	65	85
Bonding Wire (Sales Volume)	100	60	35	60	90	90	85
Leadframe (Sales)	100	65	45	60	90	100	85
Advanced Materials (Sales)	100	65	35	55	67	75	77

	FY2010(Result)				FY2011			
	10/1Q	10/2Q	10/3Q	10/4Q	11/1Q	11/2Q	11/3Q	11/4Q(FCST)
Tape Materials (Sales)	100	75	50	70	60	38	36	52
Bonding Wire (Sales Volume)	95	90	75	70	70	67	52	47
Leadframe (Sales)	105	100	75	85	95	86	64	62
Advanced Materials (Sales)	85	86	71	74	79	78	72	60



Production/Sales trend of Mineral resources / Smelting & Refining

		FY2009					FY2010					FY2011					Diff.		
		Result					Result					Result					FCST in Feb.	FCST in Nov.	
		1Q	2Q	3Q	4Q	Total	1Q	2Q	3Q	4Q	Total ①	1Q	2Q	3Q	4Q	Total ②	Plan (Total)	Diff. ②-①	
(Gold Mine) (t)																			
Hishikari	Production	2.6	1.3	1.1	1.8	6.8	2.8	1.9	1.4	1.6	7.7	2.0	3.2	1.4	0.9	7.5	7.5	-0.2	
	Sales	3.0	1.4	1.3	1.8	7.5	2.0	2.4	1.7	1.4	7.5	2.0	2.3	1.6	1.6	7.5	7.5	0.0	
Pogo	Production	2.8	3.1	3.3	2.9	12.1	2.9	2.5	3.2	3.4	12.0	2.5	2.5	2.5	2.6	10.1	10.4	-1.9	
	Sales	2.7	3.1	3.3	2.8	11.9	2.9	2.7	3.1	3.2	11.9	2.8	2.6	2.5	2.5	10.4	10.7	-1.5	
(Copper Mine) (kt)																			
Morenci	Production	60	55	57	55	227	52	61	58	62	233	65	72	72	70	279	287	46.0	
	Sales	60	55	57	55	227	52	61	49	46	208	63	76	69	70	278	275	70.0	
La Candelaria	Production	36	36	30	32	134	25	28	46	37	136	36	35	36	41	148	147	12.0	
	Sales	40	41	33	36	150	30	31	51	40	152	36	38	33	44	151	146	-1.0	
Ojos Del Salade	Production	7	9	10	8	34	7	8	7	8	30	7	6	7	6	26	26	-4.0	
	Sales	7	9	10	8	34	7	8	7	8	30	6	6	7	6	25	26	-5.0	
Cerro Verde	Production	76	77	73	74	300	75	75	75	78	303	79	77	72	66	294	294	-9.0	
	Sales	76	77	73	77	303	75	75	75	78	303	77	78	73	70	298	294	-5.0	
North Parkes	Production	8	10	8	8	34	9	9	10	11	39	12	12	13	13	50	49	11.0	
	Sales	3	9	8	12	32	7	7	10	14	38	7	14	10	16	47	45	9.0	
Batu Hijau	Production	37	52	63	72	224	66	60	65	54	245	40	26	38	24	128	124	-117.0	
	Sales	45	50	66	73	234	65	53	69	44	231	42	29	36	28	135	129	-96.0	
(Smelting & Refining in Japan) (kt)																			
E-Cu	Production	104.4	90.8	93.8	106.8	395.8	102.6	101.2	100.0	100.3	404.1	85.5	72.8	71.5	100.7	330.6	354.0	-73.6	
	Sales	110.6	99.8	99.7	100.6	410.7	109.7	102.4	106.6	92.3	411.0	99.6	94.1	89.4	103.8	386.9	397.6	-24.1	
E-Ni	Production	6.5	7.5	9.9	10.0	33.9	9.9	10.5	9.8	11.1	41.3	9.5	10.6	10.5	11.2	41.7	41.0	0.4	
	Sales	8.1	7.8	9.4	11.1	36.4	10.0	10.7	11.1	10.6	42.4	10.0	11.9	11.2	10.8	43.8	44.8	1.4	
FeNi	Production	5.7	5.7	4.4	4.9	20.7	3.3	4.1	5.4	5.9	18.7	4.8	5.4	4.5	6.2	20.8	21.5	2.1	
	Sales	5.1	4.9	5.4	4.6	20.0	5.0	5.3	5.1	5.6	20.9	5.2	5.3	4.9	5.1	20.5	21.3	-0.4	
(Smelting & Refining overseas) (kt)																			
CBNC MS	Production	3.0	4.1	5.4	4.5	17.0	5.6	2.7	4.7	6.4	19.4	5.6	5.1	6.0	5.8	22.5	22.6	3.1	
(Ni content)	Sales	2.8	4.3	4.7	5.0	16.8	5.0	3.6	3.2	7.0	18.8	5.5	3.6	7.4	6.2	22.7	22.7	3.9	
PT Vale Matte	Production	16.2	16.3	17.8	17.0	67.3	19.8	18.2	20.0	18.0	76.0	16.5	18.6	18.1	18.0	71.2	70.5	-4.8	
(Ni content)	Sales	14.6	17.4	18.7	17.1	67.8	18.0	20.0	20.7	18.3	77.0	15.7	19.4	16.1	20.8	72.0	72.0	-5.0	

Sensitivity

JPY 100M Per Year

	Change	Profit up·down Forecast in Nov.
Cu	±100 \$/t	5/10
Ni	±10 ¢/lb	7/9
Au	±10 \$/Toz	4/4
¥/\$	±1 ¥/\$	12/12

(Remark)

Operating income/Recurring profit

USD/JPY translation applied to RC-related only.

Financial Position

【Shareholder's Equity Ratio】

JPY100M

End of FY	FY2007	FY2008	FY2009	FY2010	2011/2Q	2011/3Q	09 3-Yr Plan 2012
Net assets	10,918	8,800	9,815	10,524	11,286	11,064	11,200
Shareholder's equity	5,896	5,046	5,866	6,301	6,505	6,266	6,740
Shareholder's Equity Ratio	54.0%	57.3%	59.8%	59.9%	57.6%	56.6%	60%

【D/E Ratio】

JPY100M

End of FY	FY2007	FY2008	FY2009	FY2010	2011/2Q	2011/3Q	09 3-Yr Plan 2012
Interest-bearing debt	2,581	2,185	2,009	2,110	2,646	2,754	2,740
Shareholder's equity	5,896	5,046	5,869	6,301	6,505	6,266	6,740
D/E ratio	0.44	0.43	0.34	0.33	0.41	0.44	0.4

【Dividend payout ratio】

End of FY	FY2007	FY2008	FY2009	FY2010	09 3-Yr Plan 2012
Dividend / share (JPY)	30.0	13.0	20.0	32.0	-
Net Income / share (JPY)	238.13	38.87	96.26	149.38	-
Dividend payout ratio	12.6%	33.4%	20.8%	21.4%	20%+

Consolidated companies (62) / Equity-method affiliated companies (16)

at December 31, 2011

Mineral Resources

	Voting Shares	Location	Operations
Consolidated companies			
Sumiko Resources Exploration & Development Co., Ltd	100	Japan	Geological survey of resources; Test boring
Sumitomo Metal Mining America	100	USA	Exploration; Management of mining subsidiaries in USA.
Sumitomo Metal Mining Arizona	80	USA	Mining and related operations
SMMA Candelaria Inc.	100	USA	Investment in local company in Chile operating Candelaria Mine
Sumitomo Metal Mining Canada Ltd.	100	Canada	Exploration, Consulting
Sumitomo Metal Mining Oceania	100	Australia	Resource surveys, mine development and related operations in Oceania
Sumitomo Metal Mining Pogo LLC	100	USA	Investment in Pogo Mine
SMM Resources	100	Canada	Mineral Resources Business
SMM Cerro Verde Netherlands B.V.	80	Netherlands	Investments in local Peruvian companies engaged in the Cerro Verde Mine operation
SMM Exploration Corporation	100	USA	Mineral Resources Business
SMM Solomon Limited	70	Solomon Islands	Exploration in Solomon Islands
Sumitomo Metal Mining Peru S.A	100	Peru	Exploration in South America
Sumitomo Metal Mining Chile LTDA.	100	Chile	Exploration in South America
Sumiko Solomon Exploration Co., Ltd.	70	Japan	Exploration in Solomon Islands
SUMAC MINES LTD.	100	Canada	Exploration
Stone Boy Inc.	80	USA	Exploration
SMM Sierra Gorda Inversiones Ltda.	70	Chile	Investment in Sierra Gorda Project
Equity-method affiliated companies			
Sociedad Minera Cerro Verde S.A.A	21	Peru	Cerro Verde Mine
Compania Contractual Minera Candelaria	20	Chile	Candelaria Mine
Compania Contractual Minera Ojos del Salado	20	Chile	Ojos del Salade Mine
Sierra Gorda SCM	45	Chile	Sierra Gorda Mine
Cordillera Exploration Co., Inc.	25	Philippines	Exploration in Philippines

Smelting & Refining

	Voting Shares	Location	Operations
Consolidated companies			
Hyuga Smelting Co., Ltd	60	Japan	Ferro-nickel smelting
Shisaka Smelting Co.,Ltd.	100	Japan	Manufacture of crude zinc oxide
Sumiko Logistics Co., Ltd.	100	Japan	Maritime trading; Harbor transportation and services; Land Transportation
SUMIC Nickel Netherlands b.v.	52	Netherlands	Investment in nickel and cobalt development businesses; Sale of nickel and cobalt
Coral Bay Nickel Corporation	54	Philippines	Manufacture of nickel and cobalt
Taganito HPAL Nickel Corporation	62.5	Philippines	Taganito Project
Sumitomo Metal Mining Philippine Holdings Corporation	100	Philippines	Regional headquarters for the nickel business
Sumiko Business Consulting(Shanghai) Co., Ltd.	100	China	Business consulting
Taihei Metal Industry Co., Ltd.	97	Japan	Manufacture of heat-, corrosion- and friction-resistant steel castings and precision castings
Equity-method affiliated companies			
Jinlong Copper Co., Ltd.	27	China	Manufacture and sale of electrolytic copper and sulfuric acid
Acids Co., Ltd.	50	Japan	Manufacture and sale of sulfuric acid and related products
PT Vale Indonesia Tbk	20	Indonesia	Nickel ore mining; Nickel smelting
Nickel Asia Corporation	25	Philippines	Nickel ore mining
FIGESBAL	26	New Caledonia	Nickel ore mining; Harbor transportation
Vale New-Caledonia S.A.S.	21	France	Goro Mine
MS Zinc Co., Ltd.	50	Japan	Manufacture and sale of zinc and related operations
Mitsui Sumitomo Metal Mining Brass & Copper Co.,Ltd	50	Japan	Manufacture and sale of copper and brass products and processed copper and brass products

Materials

	Voting Shares	Location	Operations
Consolidated companies			
Okuchi Electronics Co., Ltd.	100	Japan	Lead frame etching and plating/ Manufacture of Bonding wire and functional inks/Recovery and recycling of non-ferrous metals
Niihama Electronics Co., Ltd.	100	Japan	Manufacture of semiconductor leadframes and flexible circuit materials
Shinko Co., Ltd.	94	Japan	Design, manufacture, and sale of printed circuit boards
Sumitomo Metal Mining Asia Pacific Pte.Ltd.	100	Singapore	Regional headquarters for international lead frame operations
Malaysian Electronics Materials SDN. BHD.	100	Malaysia	Manufacture and sale of bonding wire and thick-film paste
M-SMM Electronics SDN.BHD	100	Malaysia	Manufacture and sale of leadframes
Sumiko Electronics Taiwan Co.,Ltd.	70	Taiwan	Manufacture and sale of leadframes and tape materials
Sumiko Leadframe (Thailand) Co.,Ltd.	100	Thailand	Manufacture and sale of leadframes
Sumiko Leadframe Chengdu Co., Ltd.	85	China	Manufacture and sale of leadframes
Sumiko Precision Chengdu Co., Ltd	70	China	Manufacture of leadframes
Sumiko Electronics Suzhou Co., Ltd.	100	China	Manufacture and sale of semiconductor package materials
Sumitomo Metal Mining Electronics Materials(Shanghai) Co., Ltd.	100	China	Manufacture and sale of bonding wire
SumikoTec Co., Ltd.	100	Japan	Terminals and connectors for electronic and electric equipment/Components, electric wire, power cords and pressure bonding machines relating to the above and their maintenance/Manufacture and sale of formed products for optical equipment, etc.
Nittosha Co., Ltd.	100	Japan	Plating of metal products, surface treatment processing and distribution / Electromagnetic shielding processing to electronics resin products through a dry plating method
Sumiko Kunitomi Denshi Co., Ltd.	100	Japan	Manufacture of crystal products and magnetic materials
Shanghai Sumiko Electronic Paste Co., Ltd.	51	China	Manufacture and sale of thick-film paste
Dongguan Sumiko Electronic Paste Co., Ltd.	76	China	Manufacture and sale of thick-film paste
SMM KOREA Co.,Ltd.	100	Korea	Sales support for advanced materials and business operations
Taiwan Sumiko Materials Co., Ltd	70	Taiwan	Manufacture of bonding wire
SMM Precision Co., Ltd.	100	Japan	Manufacture and sale of optical communications components
Equity-method affiliated company			
Granopt Ltd.	50	Japan	Manufacture and sale of rare earth iron garnet (RIG)

Others

	Voting Shares	Location	Operations
Consolidated companies			
Sumico Lubricant Co., Ltd.	100	Japan	Manufacture and sale of various lubricants
Sumico Lubricant Trading (Shanghai) Co.,Ltd	100	China	Sale of various lubricants
Sumitomo Metal Mining Siporex Co., Ltd.	100	Japan	Manufacture and sale of ALC (Autoclaved Lightweight aerated Concrete) and other construction materials
JCO Co., Ltd.	100	Japan	Management of facilities using uranium and related wastes
Igeta Heim Co., Ltd.	100	Japan	Construction of steel frame and reinforced concrete apartments and condominiums
Sumiko Techno-Research Co., Ltd.	100	Japan	Environmental measurement verification operations such as water quality, air, soil, noise and vibration, etc. Data collection, adjustment and product evolution as well as technological development
Sumiko Technical Service Co., Ltd	100	Japan	Commission-based work in area of nonferrous smelting/ Personnel agency business
Sumitomo Metal Mining Engineering Co., Ltd.	100	Japan	Nonferrous metal smelting, Chemicals business, Environment sector machinery & equipment, Plant surveys, etc. design, manufacturing and repair & maintenance
Sumiko Plantech Co., Ltd.	100	Japan	Manufacture of machinery & equipment and repair work for nonferrous metal smelting and chemical plants, etc. / Installation of machinery & equipment and piping work / Steel structure work
Japan Irradiation Service Co., Ltd.	100	Japan	Irradiation sterilization service for pharmaceutical products, medical instruments, and pharmaceutical containers,etc., /Modification of various industrial materials
SMM Holland B.V.	100	Netherlands	Investment in nickel and cobalt development businesses
Equity-method affiliated companies			
N. E. Chemcat Corporation	50	Japan	Manufacture of precious metal catalysts and surface treatment chemicals; Recovery and refining of precious metals
Nippon Ketjen Co., Ltd.	50	Japan	Manufacture and sale of desulphurization catalysts for petroleum processing