

Supplementary Explanation for Financial Summary

2nd Quarter FY2012



Taganito Project

November 6th, 2012

Sumitomo Metal Mining Co., Ltd.

The materials provided herein are not intended as disclosure under the Securities Law, and no warranty is made as to their completeness or accuracy. Any projections included in these materials are based solely on information available at the time of this briefing, and are subject to change based on market conditions, competitive conditions, and a number of other factors. Therefore, we ask that you refrain from making any investment decisions based on these materials alone. The Company cannot be held responsible in any way for any losses that may occur as a result of the use of these materials.

All copyrights, trademarks, and intellectual property rights attaching to the materials herein are the sole property of Sumitomo Metal Mining Co., Ltd..

Comparison

FY2012/1H Result vs FY2011/1H Result vs FY2012/1H Forecast in Aug.

JPY100M

	FY2012/1H ①Result	FY2011/1H ②Result	Diff. ①-②	FY2012/1H ③Forecast in Aug.	Diff. ①-③
Net sales	3,985	4,343	△ 358	3,860	125
Operating income	397	451	△ 54	340	57
Recurring profit	392	616	△ 224	340	52
Net income	272	375	△ 103	280	△ 8
(Inventory evaluation P&L)	△ 32	△ 43	11	△ 55	23
(Exchange gain & loss)	△ 37	△ 42	5	△ 25	△ 12
Cu (\$ /t)	7,792	9,072	△ 1,280	7,683	109
Ni (\$ /lb)	7.60	10.52	△ 2.92	7.64	△ 0.04
Au (\$ /oz)	1,632.2	1,603.1	29.1	1,605.1	27.1
Exchange (¥ / \$)	79.42	79.82	△ 0.40	79.11	0.31

Exchange	12/9 End	12/6 End	12/3 End	11/12 End	11/9 End
(¥ / \$)	77.57	79.28	82.13	77.74	76.65

【Diff of FY2012/1H Result vs FY2011/1H Result ①-②】

Recurring profit△224 : Metal Price / Exchange △202、Increase of loss of Vale New Caledonia △42、
Byproducts+20、etc

【Diff of FY2012/1H Result vs FY2012/1H Forecast (in Aug.) ①-③】

Recurring profit+52 : Decrease of Inventory loss+23、Byproducts+20、Equity in earnings of affiliated companies+5、etc

FY2012 1H Result vs 2H Forecast / FY2012 New and old Forecast (in May vs in Nov.)

JPY100M

	FY2012/1H ①Result	FY2012/2H ②Forecast	FY2012 ④Forecast in Nov.	FY2012 ④Forecast in May	Diff. ③-④	Diff. ②-①
Net sales	3,985	3,655	7,640	8,140	△ 500	△ 330
Operating income	397	333	730	800	△ 70	△ 64
Recurring profit	392	428	820	920	△ 100	36
Net income	272	308	580	680	△ 100	36
(Inventory evaluation P&L)	△ 32	△ 13	△ 45	△ 8	△ 37	19
(Exchange gain & loss)	△ 37	0	△ 37	0	△ 37	37
Cu (\$ /t)	7,792	7,500	7,646	8,500	△ 854	△ 292
Ni (\$ /lb)	7.60	7.00	7.30	8.00	△ 0.70	△ 0.60
Au (\$ /oz)	1,632.2	1,700.0	1,666.1	1,650.0	16.1	67.8
Exchange (¥ / \$)	79.42	78.00	78.71	80.00	△ 1.29	△ 1.42

【Diff of Forecast of FY2012 in Nov vs in May ③-④】

Recurring profit△100 : Metal Price / Exchange △140、Materials Business△10、
Decrease of loss of Vale New Caledonia+40、etc

【Diff. of FY2012/2H Forecast vs FY2012/1H Result ②-①】

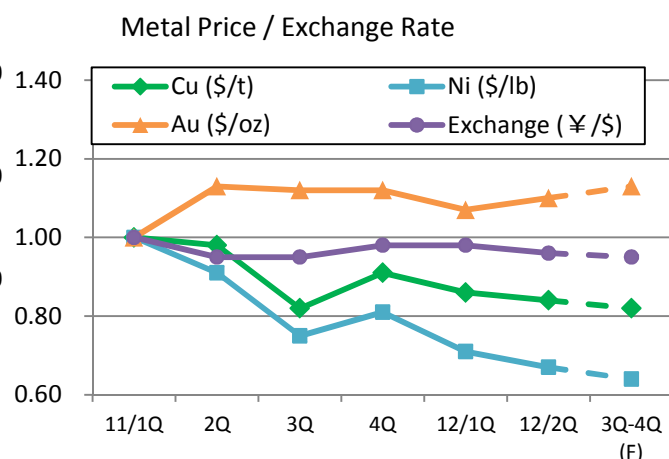
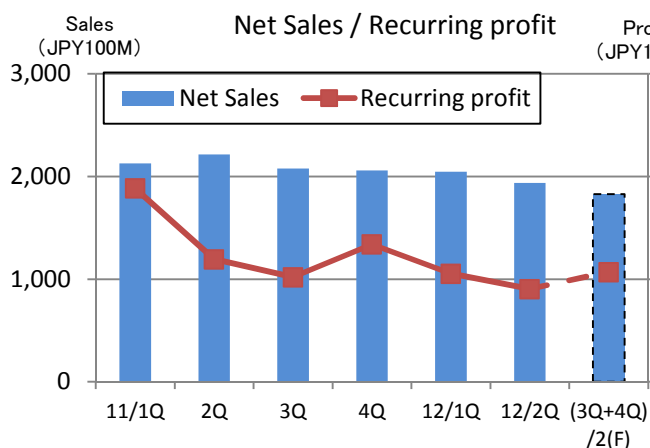
Recurring profit+36 : Metal price / Exchange △60、Quantity+15、Material Business+20、
Decrease of loss of Vale New Caledonia +70、etc

Quarterly Financial Results

JPY100M

	FY2009					FY2010				
	1Q	2Q	3Q	4Q	Total	1Q	2Q	3Q	4Q	Total
Net sales	1,552	1,707	1,929	2,070	7,258	2,190	2,107	2,136	2,208	8,641
Operating income	107	126	180	250	663	295	158	203	306	962
① Recurring profit	129	149	258	342	879	299	176	308	455	1,238
Net income	66	103	169	202	540	202	154	205	280	841
Cu (\$/t)	4,663	5,859	6,648	7,232	6,101	7,027	7,243	8,637	9,652	8,140
Ni (\$/lb)	5.86	8.02	7.95	9.05	7.72	10.19	9.61	10.71	12.20	10.68
Au (\$/oz)	922	960	1,102	1,110	1,023	1,195	1,227	1,369	1,385	1,294
Exchange(¥/\$)	97.33	93.66	89.72	90.71	92.86	92.02	85.90	82.65	82.35	85.73
Inventory impairment										
(Smelting) Impairment	25	△ 5	8	4	32	△ 17	15	2	0	0
(Smelting) QP Diff etc.	22	21	27	21	91	61	△ 55	6	32	44
(Smelting) Total	47	16	35	25	123	44	△ 40	8	32	44
(Materials & others)	14	12	2	4	32	△ 3	2	0	2	1
② Total	61	28	37	29	155	41	△ 38	8	34	45
① - ②	68	121	221	313	724	258	214	300	421	1,193

	FY2011					FY2012				
	1Q	2Q	3Q	4Q	Total	1Q Result	2Q Result	1H Result	2H Forecast	FY2012 Forecast
Net sales	2,129	2,214	2,078	2,058	8,479	2,046	1,939	3,985	3,655	7,640
Operating income	281	170	170	265	886	205	192	397	333	730
① Recurring profit	377	239	204	268	1,088	211	181	392	428	820
Net income	266	110	95	182	653	170	102	272	308	580
Cu (\$/t)	9,152	8,992	7,489	8,308	8,485	7,867	7,716	7,792	7,500	7,646
Ni (\$/lb)	11.02	10.01	8.30	8.92	9.56	7.78	7.41	7.60	7.00	7.30
Au (\$/oz)	1,505	1,702	1,686	1,691	1,646	1,610	1,654	1,632	1,700	1,666
Exchange(¥/\$)	81.75	77.89	77.41	79.28	79.08	80.21	78.64	79.42	78.00	78.71
Inventory impairment										
(Smelting) Impairment	△ 12	△ 40	17	36	1	△ 14	14	0	1	1
(Smelting) QP Diff etc.	33	△ 17	△ 59	1	△ 42	△ 23	△ 17	△ 40	△ 6	△ 46
(Smelting) Total	21	△ 57	△ 42	37	△ 41	△ 37	△ 3	△ 40	△ 5	△ 45
(Materials & others)	0	△ 7	△ 4	1	△ 10	3	5	8	△ 8	0
② Total	21	△ 64	△ 46	38	△ 51	△ 34	2	△ 32	△ 13	△ 45
① - ②	356	303	250	230	1,139	245	179	424	441	865



Segment profit (Operating income / Contribution margin)

JPY100M

		FY2010					FY2011					FY2012			
		1Q	2Q	3Q	4Q	Total	1Q	2Q	3Q	4Q	Total	1Q	2Q	3Q+4Q	Total
Operating Profit	Mineral Resources	114	109	94	115	432	144	150	124	110	528	149	110	251	510
	Smelting & Refining	180	38	133	218	569	166	47	57	210	480	53	97	110	260
	Materials	39	24	7	8	78	18	3	△ 8	△ 3	10	2	9	19	30
	Others	△ 3	0	7	6	10	△ 3	0	7	10	14	3	1	16	20
Sub-Total		330	171	241	347	1,089	325	200	180	327	1,032	207	217	396	820
Headquarter Exp. etc.		△ 35	△ 13	△ 38	△ 41	△ 127	△ 44	△ 30	△ 10	△ 62	△ 146	△ 2	△ 25	△ 63	△ 90
Operating income Total		295	158	203	306	962	281	170	170	265	886	205	192	333	730

		Result						Forecast
		2006	2007	2008	2009	2010	2011	2012
Operating Profit	Mineral Resources	338	384	181	309	432	528	510
	Smelting & Refining	1,181	1,174	107	417	569	480	260
	Materials	152	98	△ 87	45	78	10	30
	Others	63	37	6	△ 1	10	14	20
Sub-Total		1,734	1,693	207	770	1,089	1,032	820
Headquarter Exp. etc.		△ 107	△ 138	△ 100	△ 107	△ 127	△ 146	△ 90
Operating income Total		1,627	1,555	107	663	962	886	730

The company has changed reporting segment from 2012/1Q ("Materials" segment and "Others" segment). In this page, profit till FY2011 is shown in previous segment grouping.

		FY2010					FY2011					FY2012			
		1Q	2Q	3Q	4Q	Total	1Q	2Q	3Q	4Q	Total	1Q	2Q	3Q+4Q	Total
Contribution Margin	Mineral Resources	169	142	181	213	705	233	240	156	177	806	196	146	328	670
	Smelting & Refining	124	4	131	236	495	149	26	7	74	256	△ 5	31	74	100
	Materials	32	18	△ 1	5	54	13	△ 7	△ 13	4	△ 3	△ 2	8	24	30
	Others	2	7	8	6	23	△ 1	6	10	19	34	3	1	16	20
Diff. Adjustment		△ 28	5	△ 11	△ 5	△ 39	△ 17	△ 26	44	△ 6	△ 5	19	△ 5	△ 14	0
Recurring Profit Total		299	176	308	455	1,238	377	239	204	268	1,088	211	181	428	820

Equity in earnings of affiliated companies

JPY100M

		FY2010					FY2011					FY2012			
		1Q	2Q	3Q	4Q	Total	1Q	2Q	3Q	4Q	Total	1Q	2Q	3Q+4Q	Total
Cu	Cerro Verde	39	26	51	66	182	54	68	32	25	179	38	30	62	130
	Candelaria/Ojos	17	12	40	31	100	40	28	15	35	118	22	9	19	50
	Acids/Jinlong/MSMMBC	2	2	2	6	12	4	1	△ 5	4	4	0	△ 6	6	0
	Total	58	40	93	103	294	98	97	42	64	301	60	33	87	180
Ni	PT Vale Indonesia	15	24	19	16	74	19	22	12	2	55	2	1	7	10
	Figesbal/NAC/VNC	△ 35	△ 35	2	17	△ 51	△ 6	△ 11	△ 18	△ 107	△ 142	△ 29	△ 34	3	△ 60
	Total	△ 20	△ 11	21	33	23	13	11	△ 6	△ 105	△ 87	△ 27	△ 33	10	△ 50
NECC/NK/MSZ/etc.		3	8	12	8	31	4	4	△ 1	11	18	2	5	13	20
Total		41	37	126	144	348	115	112	35	△ 30	232	35	5	110	150

		Result						Forecast
		2006	2007	2008	2009	2010	2011	2012
Cu	Cerro Verde	107	180	158	129	182	179	130
	Candelaria/Ojos	143	168	86	77	100	118	50
	Acids/Jinlong/MSMMBC	29	22	0	13	12	4	0
	Total	279	370	244	219	294	301	180
Ni	PT Vale Indonesia	113	274	87	31	74	55	10
	Figesbal/NAC/VNC	8	11	△ 18	△ 25	△ 51	△ 142	△ 60
	Total	121	285	69	6	23	△ 87	△ 50
NECC/NK/MSZ/etc.		67	85	2	36	31	18	20
Total		467	740	315	261	348	232	150

Metal price and Exchange rate

	Copper (\$/t)			Copper (¢/lb)			Nickel (\$/lb)		
	FY2010	FY2011	FY2012	FY2010	FY2011	FY2012	FY2010	FY2011	FY2012
Apr	7,745	9,483	8,260	351	430	375	11.81	11.94	8.12
May	6,838	8,927	7,920	310	405	359	9.98	10.98	7.72
Jun	6,499	9,045	7,420	295	410	337	8.79	10.14	7.50
Average	7,027	9,152	7,867	319	415	357	10.19	11.02	7.78
Jul	6,735	9,619	7,589	306	436	344	8.85	10.76	7.33
Aug	7,284	9,041	7,492	330	410	340	9.71	10.02	7.10
Sep	7,709	8,315	8,068	350	377	366	10.27	9.25	7.81
Average	7,243	8,992	7,716	329	408	350	9.61	10.01	7.41
Oct	8,292	7,348		376	333		10.80	8.57	
Nov	8,470	7,552		384	343		10.39	8.11	
Dec	9,147	7,568		415	343		10.94	8.23	
Average	8,637	7,489		392	340		10.71	8.30	
Jan	9,556	8,043		433	365		11.63	8.99	
Feb	9,868	8,423		448	382		12.82	9.28	
Mar	9,531	8,457		432	384		12.16	8.49	
Average	9,652	8,308		438	377		12.20	8.92	
FY average	8,140	8,485	7,792	369	385	353	10.68	9.56	7.60
Jan-Dec average	7,535	8,821	7,964	342	400	361	9.89	10.38	8.04
Oct-Mar(FCST in Nov.)			7,500			340			7.00
FY2012(FCST in May)			8,500			386			8.00

	Gold (\$/oz)			Zinc (\$/t)			Exchange (¥/US\$)		
	FY2010	FY2011	FY2012	FY2010	FY2011	FY2012	FY2010	FY2011	FY2012
Apr	1,148.6	1,474.1	1,649.3	2,367	2,372	1,997	93.42	83.45	81.56
May	1,204.9	1,511.3	1,585.3	1,968	2,160	1,930	91.71	81.24	79.77
Jun	1,232.7	1,528.5	1,596.2	1,743	2,230	1,856	90.93	80.56	79.30
Average	1,195.4	1,504.7	1,610.3	2,026	2,254	1,928	92.02	81.75	80.21
Jul	1,194.5	1,570.7	1,593.3	1,844	2,391	1,851	87.75	79.52	79.04
Aug	1,214.6	1,757.7	1,625.9	2,045	2,212	1,814	85.50	77.28	78.69
Sep	1,271.2	1,776.3	1,743.2	2,151	2,077	2,002	84.46	76.88	78.18
Average	1,226.8	1,701.6	1,654.1	2,013	2,227	1,889	85.90	77.89	78.64
Oct	1,342.6	1,666.6		2,372	1,859		81.94	76.75	
Nov	1,370.8	1,737.5		2,292	1,916		82.55	77.60	
Dec	1,392.0	1,652.5		2,281	1,916		83.46	77.88	
Average	1,368.5	1,685.5		2,315	1,897		82.65	77.41	
Jan	1,358.4	1,656.1		2,372	1,981		82.67	76.99	
Feb	1,372.0	1,742.9		2,465	2,058		82.55	78.41	
Mar	1,423.4	1,674.4		2,349	2,035		81.82	82.45	
Average	1,384.6	1,691.1		2,395	2,025		82.35	79.28	
FY average	1,293.8	1,645.7	1,632.2	2,187	2,101	1,908	85.73	79.08	79.42
Jan-Dec average	1,225.1	1,569.1	1,651.8	2,161	2,193	1,947	87.82	79.85	79.38
Oct-Mar(FCST in Nov.)			1,700.0			1,800			78.00
FY2012(FCST in May)			1,650.0			2,000			80.00

LME Price		12/1Q		12/2Q		12/2H(F)
E-Ni applied	Mar-May	8.11	Jun-Aug	7.31	Sep-Feb	7.14
Fe-Ni applied	Jan-Mar	8.92	Apr-Jun	7.78	Jul-Dec	7.21

Exchange		12/1Q		12/2Q		12/2H(F)
E-Ni applied	Mar-May	81.26	Jun-Aug	79.01	Sep-Feb	78.03
Fe-Ni applied	Jan-Mar	79.28	Apr-Jun	80.21	Jul-Dec	78.32

Comparison

(2012/1H Result vs 2011/1H Result)

JPY100M

Operating income			
	2012/1H ①	2011/1H ②	Diff. ①-②
Mineral Resources	259	294	△ 35
Smelting & Refining	150	213	△ 63
Materials	11	15	△ 4
Others	4	3	1
Sub-Total	424	525	△ 101
Headquarter Exp. etc.	△ 27	△ 74	47
Total	397	451	△ 54

Contribution margin			
	2012/1H ①	2011/1H ②	Diff. ③-④
Mineral Resources	342	473	△ 131
Smelting & Refining	26	175	△ 149
Materials	6	8	△ 2
Others	4	3	1
Diff. Adjustment	14	△ 43	57
Recurring Profit	392	616	△ 224

<<Explanation of Diff.>>

1. Mineral Resources

JPY100M

	Diff.	Quantity	Price	Exchange	Cost@	Others
Hishikari (Au)	△ 24	△ 19	3	△ 1	△ 6	△ 1
Pogo (Au)	13	△ 1	24		△ 5	△ 5
Morenci/NP (Cu)	△ 24					
Others	0					
Op. income Total	△ 35					

Au Sales (t)	2012/1H	2011/1H	Diff.
Hishikari	4.0	4.3	△ 0.3
Pogo(100%)	5.3	5.4	△ 0.1

2. Smelting & Refining

JPY100M

	Diff.	Quantity	Price	Cost@	Inventory	Others
Copper	32	16	△ 17	8	△ 6	31
Nickel	△ 100	22	△ 124	3		△ 1
Zinc/Lead	5	3			2	0
Others						0
Op. income Total	△ 63	41	△ 141	11	△ 4	30

•Inventory evaluation P&L 12/1H △ 40 JPY100M (Cu△25, Ni△15, Zn±0)
 11/1H △ 36 JPY100M (Cu△20, Ni△14, Zn△2)

Comparison

(2012/1H Result vs 2011/1H Result)

3. Materials

【Net Sales, by products】

JPY100M

	2012/1H ①	2011/1H ②	Diff. ①-②
Semiconductor①CuPI・COF・LF・FW・Alloy	378	568	△ 190
Semiconductor②PWB・Terminals・Recycle	192	211	△ 19
Advanced①Film materials・Crystals	141	146	△ 5
Advanced②Battery・Magnet・Ink・Rare metals	75	57	18
Energy, Catalysts, Construction materials, Others	89	88	1
Total	875	1,070	△ 195

Equity in earnings of affiliated companies

JPY100M

		2012/1H ①	2011/1H ②	Diff. ①-②
Cu	Cerro Verde	68	122	△ 54
	Candelaria/Ojos	31	68	△ 37
	Acids/Jinlong/MSMMBC	△ 6	5	△ 11
	Total	93	195	△ 102
Ni	PT Vale Indonesia	3	41	△ 38
	Figesbal/NAC/VNC	△ 63	△ 17	△ 46
	Total	△ 60	24	△ 84
NECC/NK/MSZ/Others		7	8	△ 1
Total		40	227	△ 187
Segment	Mineral Resources	98	190	△ 92
	Smelting & Refining	△ 69	25	△ 94
	Others	11	12	△ 1
Total		40	227	△ 187

Comparison

(2012/2Q Result vs 2012/1Q Result)

JPY100M

Operating income				Contribution margin			
	2012/2Q	2012/1Q	Diff.		2012/2Q	2012/1Q	Diff.
	①	②	①-②		③	④	③-④
Mineral Resources	110	149	△ 39	Mineral Resources	146	196	△ 50
Smelting & Refining	97	53	44	Smelting & Refining	31	△ 5	36
Materials	9	2	7	Materials	8	△ 2	10
Others	1	3	△ 2	Others	1	3	△ 2
Sub-Total	217	207	10	Diff. Adjustment	△ 5	19	△ 24
Headquarter Exp. etc.	△ 25	△ 2	△ 23	Recurring Profit	181	211	△ 28
Total	192	205	△ 13				

<<Explanation of Diff.>>

1. Mineral Resources

JPY100M

	Diff.	Quantity	Price	Exchange	Cost@	Others
Hishikari (Au)	△ 43	△ 38	2	△ 1	△ 6	0
Pogo (Au)	△ 1		△ 5		3	1
Morenci/NP (Cu)	△ 16					
Others	21					
Op. income Total	△ 39					

Au Sales (t)	2012/2Q	2012/1Q	Diff.
Hishikari	1.4	2.6	△ 1.2
Pogo(100%)	2.6	2.7	△ 0.1

2. Smelting & Refining

JPY100M

	Diff.	Quantity	Price	Cost@	Inventory	Others
Copper	49	5	△ 3	3	39	5
Nickel	△ 6	△ 3	△ 3	△ 2	△ 3	5
Zinc/Lead	△ 4				△ 2	△ 2
Others	5					5
Op. income Total	44	2	△ 6	1	34	13

•Inventory evaluation P&L 2012/2Q △ 3 JPY100M (Cu+7、Ni△9、Zn△1)
 2012/1Q △ 37 JPY100M (Cu△32、Ni△6、Zn+1)

Comparison

(2012/2Q Result vs 2012/1Q Result)

3. Materials

【Net Sales, by products】

JPY100M

	2012/2Q ①	2012/1Q ②	Diff. ①-②
Semiconductor①CuPI・COF・LF・FW・Alloy	151	226	△ 75
Semiconductor②PWB・Terminals・Recycle	98	95	3
Advanced①Film materials・Crystals	72	69	3
Advanced②Battery・Magnet・Ink・Rare metals	35	40	△ 5
Energy, Catalysts, Construction materials, Others	53	36	17
Total	409	466	△ 57

Equity in earnings of affiliated companies

JPY100M

		2012/2Q ①	2012/1Q ②	Diff. ①-②
Cu	Cerro Verde	30	38	△ 8
	Candelaria/Ojos	9	22	△ 13
	Acids/Jinlong/MSMMBC	△ 6	0	△ 6
	Total	33	60	△ 27
Ni	PT Vale Indonesia	1	2	△ 1
	Figesbal/NAC/VNC	△ 34	△ 29	△ 5
	Total	△ 33	△ 27	△ 6
NECC/NK/MSZ/Others		5	2	3
Total		5	35	△ 30
Segment	Mineral Resources	38	60	△ 22
	Smelting & Refining	△ 38	△ 31	△ 7
	Others	5	6	△ 1
Total		5	35	△ 30

Comparison

(FY2012 Forecast in Nov. vs Forecast in May)

JPY100M

FY2012 Operating income				FY2012 Contribution Margin			
	FCST in Nov ①	FCST in May ②	Diff. ①-②		FCST in Nov ③	FCST in May ④	Diff. ③-④
Mineral Resources	510	540	△ 30	Mineral Resources	670	740	△ 70
Smelting & Refining	260	290	△ 30	Smelting & Refining	100	100	0
Materials	30	60	△ 30	Materials	30	40	△ 10
Others	20	20	0	Others	20	20	0
Sub-Total	820	910	△ 90	Diff. Adjustment	0	20	△ 20
Headquarter Exp. etc.	△ 90	△ 110	20	Recurring Profit	820	920	△ 100
Operating Profit	730	800	△ 70				

<<Explanation of Diff.>>

1. Mineral Resources

JPY100M

	Diff.	Quantity	Price	Exchange	Cost@	Others
Hishikari (Au)	△ 7	0	3	△ 4	△ 3	△ 3
Pogo (Au)	1	0	3	△ 2	1	△ 1
Morenci/NP (Cu)	△ 28					
Others	4					
Op. income Total	△ 30					

Au Sales (t)	FCST in Nov	FCST in May	Diff.
Hishikari	7.5	7.5	0.0
Pogo(100%)	10.7	10.7	0.0

2. Smelting & Refining

JPY100M

	Diff.	Quantity	Price	Cost@	Inventory	Others
Copper	15	3	0	2	△ 27	37
Nickel	△ 57	△ 3	△ 36	△ 10	△ 10	2
Zinc/Lead	6			2		4
Others	6					6
Op. income Total	△ 30	0	△ 36	△ 6	△ 37	49

•Inventory evaluation P&L
 FCST in Nov △ 45 JPY100M (Cu △26、Ni △19、Zn 0)
 FCST in May △ 8 JPY100M (Cu +1、Ni△ 9、Zn 0)

Comparison

(FY2012 Forecast in Nov. vs Forecast in May)

3. Materials

【Net Sales, by products】

JPY100M

	FCST in Nov ①	FCST in May ②	Diff. ①-②
Semiconductor①CuPI・COF・LF・FW・Alloy	570	470	100
Semiconductor②PWB・Terminals・Recycle	390	420	△ 30
Advanced①Film materials・Crystals	280	310	△ 30
Advanced②Battery・Magnet・Ink・Rare metals	150	180	△ 30
Energy, Catalysts, Construction materials, Others	190	200	△ 10
Total	1,580	1,580	0

Equity in earnings of affiliated companies

JPY100M

		FCST in Nov ①	FCST in May ②	Diff. ①-②
Cu	Cerro Verde	130	150	△ 20
	Candelaria/Ojos	50	70	△ 20
	Acids/Jinlong/MSMMBC	0	10	△ 10
	Total	180	230	△ 50
Ni	PT Vale Indonesia	10	10	0
	Figesbal/NAC/VNC	△ 60	△ 100	40
	Total	△ 50	△ 90	40
NECC/NK/MSZ/Others		20	20	0
Total		150	160	△ 10
Segment	Mineral Resources	180	220	△ 40
	Smelting & Refining	△ 50	△ 80	30
	Others	20	20	0
Total		150	160	△ 10

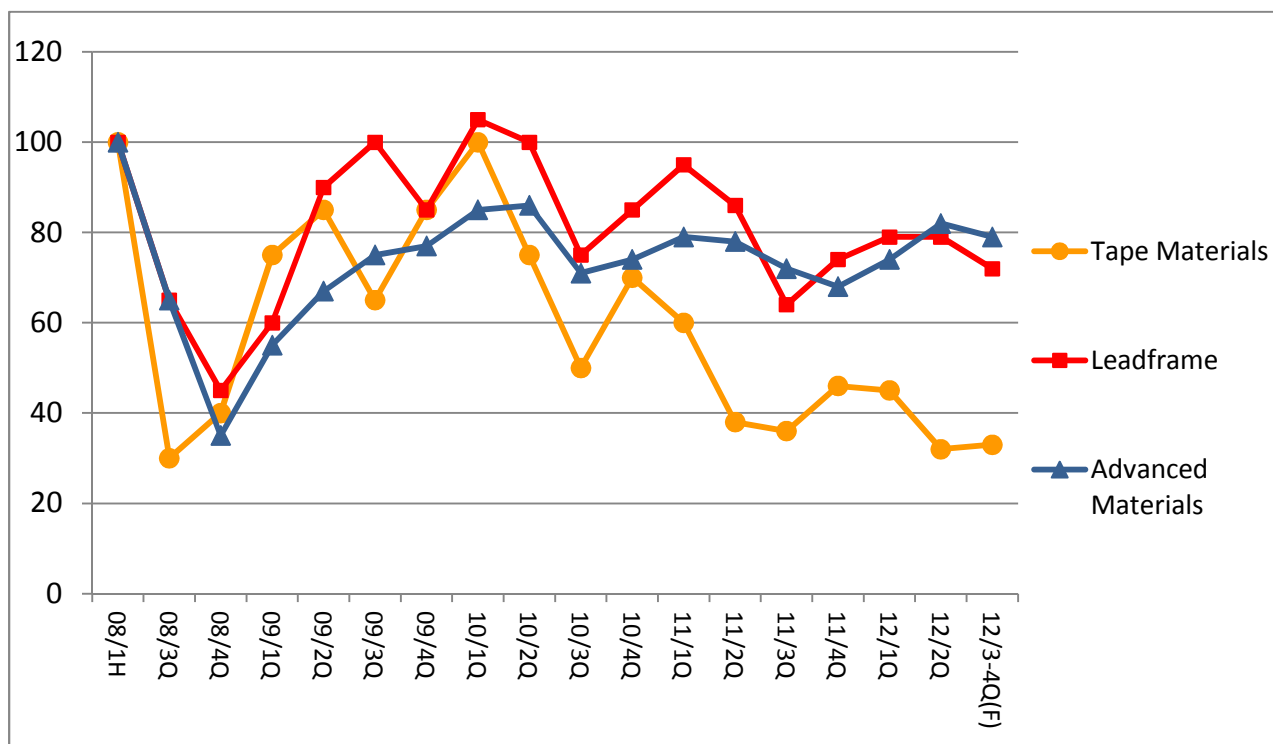
Sales trend of Semiconductor Materials and Advanced Materials

(Index FY2008/1H=100)

(Sales)

	FY2008			FY2009			
	08/1H	08/3Q	08/4Q	09/1Q	09/2Q	09/3Q	09/4Q
Tape Materials	100	30	40	75	85	65	85
Leadframe	100	65	45	60	90	100	85
Advanced Materials	100	65	35	55	67	75	77

	FY2010				FY2011				FY2012		
	1Q	2Q	3Q	4Q	1Q	2Q	3Q	4Q	1Q	2Q	3Q-4Q
Tape Materials	100	75	50	70	60	38	36	46	45	28	33
Leadframe	105	100	75	85	95	86	64	74	79	77	72
Advanced Materials	85	86	71	74	79	78	72	68	74	73	79



Production/Sales trend of Mineral Resources / Smelting & Refining

		FY2010					FY2011					FY2012					Diff. ②-①
		Result					Result					Result		Forecast		Plan	
		1Q	2Q	3Q	4Q	Total	1Q	2Q	3Q	4Q	Total ①	1Q	2Q	2H	Total ②	Total	
【Gold Mine】 (t)																	
Hishikari	Production	2.8	1.9	1.4	1.6	7.7	2.0	3.2	1.4	1.2	7.8	2.5	1.1	3.9	7.5	7.5	-0.3
	Sales	2.0	2.4	1.7	1.4	7.5	2.0	2.3	1.6	1.6	7.5	2.6	1.4	3.5	7.5	7.5	0.0
Pogo	Production	2.9	2.5	3.2	3.4	12.0	2.5	2.5	2.5	2.6	10.1	2.7	2.6	5.4	10.7	10.7	0.6
	Sales	2.9	2.7	3.1	3.2	11.9	2.8	2.6	2.5	2.5	10.4	2.6	2.7	5.4	10.7	10.7	0.3
【Copper Mine】 (kt)																	
Morenci	Production	52	61	58	62	233	65	72	72	70	279	69	69	146	284	284	5.0
	Sales	52	61	49	46	208	63	76	69	70	278	78	50	192	320	304	42.0
La Candelaria	Production	25	28	46	37	136	36	35	36	41	148	27	25	56	108	121	-40.0
	Sales	30	31	51	40	152	36	38	33	43	150	26	23	52	101	121	-49.0
Ojos Del Salado	Production	7	8	7	8	30	7	6	7	6	26	6	7	12	25	27	-1.0
	Sales	7	8	7	8	30	6	6	7	7	26	6	7	12	25	27	-1.0
Cerro Verde	Production	75	75	75	78	303	79	77	72	66	294	63	68	138	269	269	-25.0
	Sales	75	75	75	78	303	77	78	73	70	298	62	67	140	269	269	-29.0
North Parkes	Production	9	9	10	11	39	12	12	13	13	50	13	14	27	54	54	4.0
	Sales	7	7	10	14	38	7	14	10	16	47	11	14	29	54	53	7.0
Batu Hijau	Production	66	60	65	54	245	40	26	38	24	128	20	19	39	78	87	-50.0
	Sales	65	53	69	44	231	42	29	36	28	135	19	15	44	78	92	-57.0
【Smelting & Refining in Japan】 (kt)																	
E-Cu	Production	102.6	101.2	100.0	100.3	404.1	85.5	72.8	71.5	103.5	333.3	110.2	108.4	216.9	435.5	435.5	102.2
	Sales	109.7	102.4	106.6	92.3	411.0	99.6	94.1	89.4	107.2	390.3	117.0	108.5	222.1	447.6	442.5	57.3
E-Ni	Production	9.9	10.5	9.8	11.1	41.3	9.5	10.6	10.5	11.2	41.7	10.0	10.8	20.4	41.2	41.1	-0.5
	Sales	10.0	10.7	11.1	10.6	42.4	10.0	11.9	11.2	11.3	44.4	11.2	11.2	21.3	43.7	46.6	-0.7
FeNi	Production	3.3	4.1	5.4	5.9	18.7	4.8	5.4	4.5	5.7	20.4	4.7	6.0	11.3	22.0	22.2	1.6
	Sales	5.0	5.3	5.1	5.6	20.9	5.2	5.3	4.9	5.3	20.7	5.1	5.7	11.1	21.9	22.2	1.2
【Smelting & Refining overseas】 (kt)																	
CBNC MS (Ni content)	Production	5.6	2.7	4.7	6.4	19.4	5.6	5.1	6.0	5.8	22.5	6.5	5.2	12.0	23.7	23.9	1.2
	Sales	5.0	3.6	3.2	7.0	18.8	5.5	3.6	7.4	6.2	22.7	5.4	6.1	12.2	23.7	23.9	1.0
PT Vale Matte (Ni content)	Production	19.8	18.2	20.0	18.0	76.0	16.5	18.6	18.1	13.7	66.9	12.4	16.6	43.5	72.5	72.5	5.6
	Sales	18.0	20.0	20.7	18.3	77.0	15.7	19.4	16.1	15.6	66.8	12.5	16.3	44.9	73.7	73.5	6.9

Sensitivity

JPY100M / Year

	Change	Profit Up · Down
Cu	±100 \$ /t	6/10
Ni	±10 ¢ /lb	7/9
Au	±10 \$ /Toz	4/4
¥ / \$	±1 ¥/\$	11/11

(Remark)

- 1) Operating income/Recurring profit
- 2) USD/JPY translation applied to RC-related only.

Financial Position

【Shareholder's Equity Ratio】

JPY100M

End of FY	FY2008	FY2009	FY2010	FY2011	FY2012/2Q	09 3-Yr Plan 2012
Net assets	8,803	9,820	10,528	11,468	11,783	11,200
Shareholder's equity	5,049	5,869	6,305	6,597	6,803	6,740
Shareholder's Equity Ratio	57.4%	59.8%	59.9%	57.5%	57.7%	60%

【D/E Ratio】

JPY100M

End of FY	FY2008	FY2009	FY2010	FY2011	FY2012/2Q	09 3-Yr Plan 2012
Interest-bearing debt	2,185	2,009	2,110	2,660	2,938	2,740
Shareholder's equity	5,049	5,869	6,305	6,597	6,803	6,740
D/E ratio	0.43	0.34	0.33	0.40	0.43	0.4

【Dividend payout ratio】

	FY2008	FY2009	FY2010	FY2011	09 3-Yr Plan 2012
Dividend / share (JPY)	13.0	20.0	32.0	28.0	—
Net Income / share (JPY)	38.87	96.26	149.38	116.05	—
Dividend payout ratio	33.4%	20.8%	21.4%	24.1%	20% +

Consolidated companies (61) / Equity-method affiliated companies (16)
at September 30, 2012
Mineral Resources

	Voting Shares	Location	Operations
Consolidated companies			
Sumiko Resources Exploration & Development Co., Ltd	100	Japan	Geological survey of resources; Test boring
Sumitomo Metal Mining America Inc.	100	USA	Exploration; Management of mining subsidiaries in USA.
Sumitomo Metal Mining Arizona Inc.	80	USA	Mining and related operations
SMMA Candelaria Inc.	100	USA	Investment in local company in Chile operating Candelaria Mine
Sumitomo Metal Mining Canada Ltd.	100	Canada	Exploration, Consulting
Sumitomo Metal Mining Oceania Pty. Ltd.	100	Australia	Resource surveys, mine development and related operations in Oceania
Sumitomo Metal Mining Pogo LLC	100	USA	Investment in Pogo Mine
SMM Resources Inc.	100	Canada	Mineral Resources Business
SMM Cerro Verde Netherlands B.V.	80	Netherlands	Investments in local Peruvian companies engaged in the Cerro Verde Mine operation
SMM Exploration Corporation	100	USA	Mineral Resources Business
SMM Solomon Limited	100	Solomon Islands	Exploration in Solomon Islands
Sumitomo Metal Mining Peru S.A	100	Peru	Exploration in South America
Sumitomo Metal Mining Chile LTDA.	100	Chile	Exploration in South America
Sumiko Solomon Exploration Co., Ltd.	70	Japan	Exploration in Solomon Islands
SUMAC MINES LTD.	100	Canada	Exploration
Stone Boy Inc.	80	USA	Exploration
SMM Sierra Gorda Inversiones Ltda.	70	Chile	Investment in Sierra Gorda Project
Sumitomo Metal Mining do Brasil LTDA.	100	Brazil	Exploration in Brazil
Equity-method affiliated companies			
Sociedad Minera Cerro Verde S.A.A	21	Peru	Cerro Verde Mine
Compania Contractual Minera Candelaria	20	Chile	Candelaria Mine
Compania Contractual Minera Ojos del Salado	20	Chile	Ojos del Salade Mine
Sierra Gorda SCM	45	Chile	Sierra Gorda Mine
Cordillera Exploration Co., Inc.	25	Philippines	Exploration in Philippines

Smelting & Refining

	Voting Shares	Location	Operations
Consolidated companies			
Hyuga Smelting Co., Ltd	60	Japan	Ferro-nickel smelting
Shisaka Smelting Co., Ltd.	100	Japan	Manufacture of crude zinc oxide
Sumiko Logistics Co., Ltd.	100	Japan	Maritime trading; Harbor transportation and services; Land Transportation
SUMIC Nickel Netherlands b.v.	52	Netherlands	Investment in nickel and cobalt development businesses; Sale of nickel and cobalt
Coral Bay Nickel Corporation	54	Philippines	Manufacture of nickel and cobalt
Taganito HPAL Nickel Corporation	62.5	Philippines	Taganito Project
Sumitomo Metal Mining Philippine Holdings Corporation	100	Philippines	Regional headquarters for the nickel business
Sumitomo Metal Mining Management (Shanghai) Co., Ltd.	100	China	Sales of SMM and SMM group company products in China, Provision of management business service for Chinese group companies, Business consulting
Taihei Metal Industry Co., Ltd.	97	Japan	Manufacture of heat-, corrosion- and friction-resistant steel castings and precision castings
Equity-method affiliated companies			
Jinlong Copper Co., Ltd.	27	China	Manufacture and sale of electrolytic copper and sulfuric acid
Acids Co., Ltd.	50	Japan	Manufacture and sale of sulfuric acid and related products
PT Vale Indonesia Tbk	20	Indonesia	Nickel ore mining; Nickel smelting
Nickel Asia Corporation	25	Philippines	Nickel ore mining
FIGESBAL	26	New Caledonia	Nickel ore mining; Harbor transportation
Vale New-Caledonia S.A.S.	21	France	Goro Mine
MS Zinc Co., Ltd.	50	Japan	Manufacture and sale of zinc and related operations
Mitsui Sumitomo Metal Mining Brass & Copper Co., Ltd	50	Japan	Manufacture and sale of copper and brass products and processed copper and brass products

Materials

	Voting Shares	Location	Operations
Consolidated companies			
Okuchi Electronics Co., Ltd.	100	Japan	Lead frame etching and plating/ Manufacture of functional inks/Recovery and recycling of non-ferrous metals
Niihama Electronics Co., Ltd.	100	Japan	Manufacture of semiconductor leadframes and flexible circuit materials
Shinko Co., Ltd.	94	Japan	Design, manufacture, and sale of printed circuit boards
Sumitomo Metal Mining Asia Pacific Pte.Ltd.	100	Singapore	Regional headquarters for international lead frame operations
M-SMM Electronics SDN.BHD	100	Malaysia	Manufacture and sale of leadframes
Sumiko Electronics Taiwan Co., Ltd.	70	Taiwan	Manufacture and sale of leadframes and tape materials
Sumiko Leadframe Chengdu Co., Ltd.	85	China	Manufacture and sale of leadframes
Sumiko Precision Chengdu Co., Ltd	70	China	Manufacture of leadframes
Sumiko Electronics Suzhou Co., Ltd.	100	China	Manufacture and sale of semiconductor package materials
Sumitomo Metal Mining Electronics Materials(Shanghai) Co., Ltd.	100	China	Manufacture and sale of bonding wire
SumikoTec Co., Ltd.	100	Japan	Terminals and connectors for electronic and electric equipment/Components, electric wire, power cords and pressure bonding machines relating to the above and their maintenance/Manufacture and sale of formed products for optical equipment, etc.
Nittosha Co., Ltd.	100	Japan	Plating of metal products, surface treatment processing and distribution / Electromagnetic shielding processing to electronics resin products through a dry plating method
Sumiko Kunitomi Denshi Co., Ltd.	100	Japan	Manufacture of crystal products and magnetic materials
Shanghai Sumiko Electronic Paste Co., Ltd.	69	China	Manufacture and sale of thick-film paste
Dongguan Sumiko Electronic Paste Co., Ltd.	85	China	Manufacture and sale of thick-film paste
SMM KOREA Co.,Ltd.	100	Korea	Sales support for advanced materials and business operations
SMM Precision Co., Ltd.	100	Japan	Manufacture and sale of optical communications components
Sumico Lubricant Co., Ltd.	100	Japan	Manufacture and sale of various lubricants
Sumico Lubricant Trading (Shanghai) Co.,Ltd	100	China	Sale of various lubricants
Sumitomo Metal Mining Siporex Co., Ltd.	100	Japan	Manufacture and sale of ALC (Autoclaved Lightweight aerated Concrete) and other construction materials
JCO Co., Ltd.	100	Japan	Management of facilities using uranium and related wastes
Igeta Heim Co., Ltd.	100	Japan	Construction of steel frame and reinforced concrete apartments and condominiums
Japan Irradiation Service Co., Ltd.	100	Japan	Irradiation sterilization service for pharmaceutical products, medical instruments, and pharmaceutical containers,etc., /Modification of various industrial materials
Equity-method affiliated company			
Granopt Ltd.	50	Japan	Manufacture and sale of rare earth iron garnet (RIG)
N. E. Chemcat Corporation	50	Japan	Manufacture of precious metal catalysts and surface treatment chemicals; Recovery and refining of precious metals
Nippon Ketjen Co., Ltd.	50	Japan	Manufacture and sale of desulphurization catalysts for petroleum processing

Others

	Voting Shares	Location	Operations
Consolidated companies			
Sumiko Techno-Research Co., Ltd.	100	Japan	Environmental measurement verification operations such as water quality, air, soil, noise and vibration, etc. Data collection, adjustment and product evolution as well as technological development
Sumiko Technical Service Co., Ltd	100	Japan	Commission-based work in area of nonferrous smelting/ Personnel agency business
Sumitomo Metal Mining Engineering Co., Ltd.	100	Japan	Nonferrous metal smelting, Chemicals business, Environment sector machinery & equipment, Plant surveys, etc. design, manufacturing and repair & maintenance
Sumiko Plantech Co., Ltd.	100	Japan	Manufacture of machinery & equipment and repair work for nonferrous metal smelting and chemical plants, etc. / Installation of machinery & equipment and piping work / Steel structure work
SMM Holland B.V.	100	Netherlands	Investment in nickel and cobalt development businesses