

Supplementary Explanation for Financial Summary

3rd Quarter FY2013



Niihama Nickel Refinery

February 7th, 2014

Sumitomo Metal Mining Co., Ltd.

The materials provided herein are not intended as disclosure under the Securities Law, and no warranty is made as to their completeness or accuracy. Any projections included in these materials are based solely on information available at the time of this briefing, and are subject to change based on market conditions, competitive conditions, and a number of other factors. Therefore, we ask that you refrain from making any investment decisions based on these materials alone. The Company cannot be held responsible in any way for any losses that may occur as a result of the use of these materials.

All copyrights, trademarks, and intellectual property rights attaching to the materials herein are the sole property of Sumitomo Metal Mining Co., Ltd..

Comparison

FY2013/1-3Q Result vs FY2012/1-3Q Result

JPY100M

	13/1-3Q ①Result	12/1-3Q ②Result	Diff. ①-②
Net sales	6,117	5,863	254
Operating income	564	606	△ 42
Recurring profit	867	710	157
Net income	610	556	54
(Inventory evaluation P&L)	△ 40	7	△ 47
(Exchange gain & loss)	85	12	73
Cu(\$/t)	7,126	7,831	△ 705
Ni(\$/lb)	6.47	7.63	△ 1.16
Au(\$/oz)	1,337.7	1,661.2	△ 323.5
Exchange (¥/\$)	99.39	80.01	19.38

Exchange	13/12End	13/9End	13/6End	13/3End	12/12End	12/9End
(¥/\$)	105.37	97.69	98.58	94.01	86.56	77.57

【Diff. of 13/1-3Q Result vs 12/1-3Q Result ①-②】

Recurring Profit +157

Metal Price / Exchange △44 (Metal Price / Exchange△17、Inventory Evaluation△27)、

Exchange gain & loss +73、Materials Business +70、Decrease of loss of Vale New Caledonia +70

Quantity△48、Cost@+44、etc

New and Old Forecast of FY2013 (in Feb. vs in Nov.)

JPY100M

	13/1H ①Result	13/3Q ②Result	13/4Q ③Forecast	FY2013 ④Forecast in Feb.	FY2013 ⑤Forecast in Nov.	Diff. ④-⑤
Net sales	4,160	1,957	2,153	8,270	8,120	150
Operating income	407	157	156	720	710	10
Recurring profit	565	302	203	1,070	1,030	40
Net income	400	210	140	750	740	10
(Inventory evaluation P&L)	△ 33	△ 7	△ 7	△ 47	△ 62	15
(Exchange gain & loss)	32	53	△ 33	52	32	20
Cu(\$/t)	7,112	7,153	7,300	7,170	7,056	114
Ni(\$/lb)	6.55	6.31	6.50	6.48	6.42	0.06
Au(\$/oz)	1,370.6	1,271.4	1,200.0	1,303.3	1,335.3	△ 32.0
Exchange (¥/\$)	98.86	100.45	102.00	100.04	98.43	1.61

【Diff. of Forecast in Feb. vs Forecast in Nov. ④-⑤】

Recurring Profit +40

Metal Price / Exchange +18 (Metal Price / Exchange△1、Inventory Evaluation +19)、

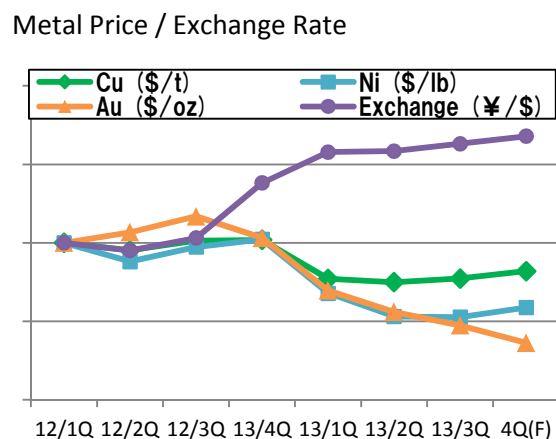
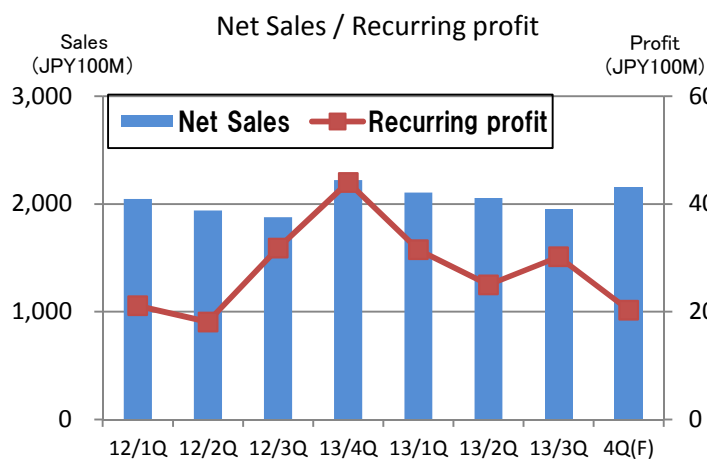
Exchange gain & loss +20、Materials Business +10、Quantity△4、Cost@△7、etc

Quarterly Financial Results

JPY100M

	FY2010					FY2011				
	1Q	2Q	3Q	4Q	Total	1Q	2Q	3Q	4Q	Total
Net sales	2,190	2,107	2,136	2,208	8,641	2,129	2,214	2,078	2,058	8,479
Operating income	295	158	203	306	962	281	170	170	265	886
① Recurring profit	299	176	308	455	1,238	377	239	204	268	1,088
Net income	202	154	205	280	841	266	110	95	182	653
Cu (\$/t)	7,027	7,243	8,637	9,652	8,140	9,152	8,992	7,489	8,308	8,485
Ni (\$/lb)	10.19	9.61	10.71	12.20	10.68	11.02	10.01	8.30	8.92	9.56
Au (\$/oz)	1,195	1,227	1,369	1,385	1,294	1,505	1,702	1,686	1,691	1,646
Exchange(¥/\$)	92.02	85.90	82.65	82.35	85.73	81.75	77.89	77.41	79.28	79.08
Inventory impairment										
(Smelting) Impairment	△ 17	15	2	0	0	△ 12	△ 40	17	36	1
(Smelting) QP Diff etc.	61	△ 55	6	32	44	33	△ 17	△ 59	1	△ 42
(Smelting) Total	44	△ 40	8	32	44	21	△ 57	△ 42	37	△ 41
(Materials & others)	△ 3	2	0	2	1	0	△ 7	△ 4	1	△ 10
② Total	41	△ 38	8	34	45	21	△ 64	△ 46	38	△ 51
① - ②	258	214	300	421	1,193	356	303	250	230	1,139

	FY2012					FY2013				
	1Q	2Q	3Q	4Q	Total	1Q	2Q	3Q	4Q Forecast	Total
Net sales	2,046	1,939	1,878	2,222	8,085	2,105	2,055	1,957	2,153	8,270
Operating income	205	192	209	352	958	202	205	157	156	720
① Recurring profit	211	181	318	440	1,150	315	250	302	203	1,070
Net income	170	102	284	310	866	233	167	210	140	750
Cu (\$/t)	7,867	7,716	7,909	7,927	7,855	7,146	7,079	7,153	7,300	7,170
Ni (\$/lb)	7.78	7.41	7.70	7.85	7.69	6.78	6.32	6.31	6.50	6.48
Au (\$/oz)	1,610	1,654	1,719	1,631	1,654	1,415	1,327	1,271	1,200	1,303
Exchange(¥/\$)	80.21	78.64	81.18	92.43	83.11	98.76	98.95	100.45	102.00	100.04
Inventory impairment										
(Smelting) Impairment	△ 14	14	△ 1	1	0	△ 36	35	1	2	2
(Smelting) QP Diff etc.	△ 23	△ 17	31	113	104	4	△ 35	△ 6	△ 9	△ 46
(Smelting) Total	△ 37	△ 3	30	114	104	△ 32	0	△ 5	△ 7	△ 44
(Materials & others)	3	5	9	△ 7	10	△ 3	2	△ 2	0	△ 3
② Total	△ 34	2	39	107	114	△ 35	2	△ 7	△ 7	△ 47
① - ②	245	179	279	333	1,036	350	248	309	210	1,117



Operating income / Segment Profit

JPY100M

		FY2011					FY2012					FY2013				
		1Q	2Q	3Q	4Q	Total	1Q	2Q	3Q	4Q	Total	1Q	2Q	3Q	4Q(F)	Total
Operating income	Mineral Resources	144	150	124	110	528	149	110	119	112	490	142	111	95	92	440
	Smelting & Refining	166	47	57	210	480	53	97	107	222	479	59	107	68	66	300
	Materials	18	3	△ 8	△ 3	10	2	9	13	21	45	22	29	30	19	100
	Others	△ 3	0	7	10	14	3	1	6	6	16	5	△ 2	6	1	10
Sub-Total		325	200	180	327	1,032	207	217	245	361	1,030	228	245	199	178	850
Headquarter Exp. etc.		△ 44	△ 30	△ 10	△ 62	△ 146	△ 2	△ 25	△ 36	△ 9	△ 72	△ 26	△ 40	△ 42	△ 22	△ 130
Operating income Total		281	170	170	265	886	205	192	209	352	958	202	205	157	156	720

		Result						Forecast
		2007	2008	2009	2010	2011	2012	2013
Operating income	Mineral Resources	384	181	309	432	528	490	440
	Smelting & Refining	1,174	107	417	569	480	479	300
	Materials	98	△ 87	45	78	10	45	100
	Others	37	6	△ 1	10	14	16	10
Sub-Total		1,693	207	770	1,089	1,032	1,030	850
Headquarter Exp. etc.		△ 138	△ 100	△ 107	△ 127	△ 146	△ 72	△ 130
Operating income Total		1,555	107	663	962	886	958	720

Note)

The company has changed reporting segment from 2012/1Q ("Materials" segment and "Others" segment). In this page, profit till FY2011 is shown in previous segment grouping.

		(Earlier Bases) Contribution Margin					(New) Segment Profit									
		FY2011					FY2012					FY2013				
		1Q	2Q	3Q	4Q	Total	1Q	2Q	3Q	4Q	Total	1Q	2Q	3Q	4Q(F)	Total
Segment Profit	Mineral Resources	233	240	156	177	806	198	148	164	150	660	192	152	155	171	670
	Smelting & Refining	149	26	7	74	256	12	48	113	234	407	59	97	68	66	290
	Materials	13	△ 7	△ 13	4	△ 3	△ 4	6	12	16	30	19	36	29	6	90
	Others	△ 1	6	10	19	34	3	1	6	6	16	5	△ 2	5	2	10
Diff. Adjustment		△ 17	△ 26	44	△ 6	△ 5	2	△ 22	23	34	37	40	△ 33	45	△ 42	10
Recurring Profit Total		377	239	204	268	1,088	211	181	318	440	1,150	315	250	302	203	1,070

Equity in earnings of affiliated companies

JPY100M

		FY2011					FY2012					FY2013				
		1Q	2Q	3Q	4Q	Total	1Q	2Q	3Q	4Q	Total	1Q	2Q	3Q	4Q(F)	Total
Cu	Cerro Verde	54	68	32	25	179	38	30	31	25	124	29	19	37	25	110
	Candelaria/Ojos	40	28	15	35	118	22	9	11	19	61	21	9	29	41	100
	Acids/Jinlong/MSMBC	4	1	△ 5	4	4	0	△ 6	△ 1	6	△ 1	2	△ 6	2	2	0
	Total	98	97	42	64	301	60	33	41	50	184	52	22	68	68	210
Ni	PT Vale Indonesia	19	22	12	2	55	2	1	4	3	10	5	6	8	11	30
	Figesbal/NAC/VNC	△ 6	△ 11	△ 18	△ 107	△ 142	△ 29	△ 34	5	10	△ 48					
	Total	13	11	△ 6	△ 105	△ 87	△ 27	△ 33	9	13	△ 38	5	6	8	11	30
NECC/NK/MSZ/SHCP/etc.		4	4	△ 1	11	18	2	5	9	9	25	9	15	9	7	40
Total		115	112	35	△ 30	232	35	5	59	72	171	66	43	85	86	280

		Result						Forecast	
		2006	2007	2008	2009	2010	2011	2012	2013
Cu	Cerro Verde	107	180	158	129	182	179	124	110
	Candelaria/Ojos	143	168	86	77	100	118	61	100
	Acids/Jinlong/MSMBC	29	22	0	13	12	4	△ 1	0
	Total	279	370	244	219	294	301	184	210
Ni	PT Vale Indonesia	113	274	87	31	74	55	10	30
	Figesbal/NAC/VNC	8	11	△ 18	△ 25	△ 51	△ 142	△ 48	
	Total	121	285	69	6	23	△ 87	△ 38	30
NECC/NK/MSZ/SHCP/etc.		67	85	2	36	31	18	25	40
Total		467	740	315	261	348	232	171	280

Metal price and Exchange rate

	Copper (\$/t)			Copper (¢/lb)			Nickel (\$/lb)		
	FY2011	FY2012	FY2013	FY2011	FY2012	FY2013	FY2011	FY2012	FY2013
Apr	9,483	8,260	7,203	430	375	327	11.94	8.12	7.09
May	8,927	7,920	7,229	405	359	328	10.98	7.72	6.78
Jun	9,045	7,420	7,004	410	337	318	10.14	7.50	6.47
Average	9,152	7,867	7,146	415	357	324	11.02	7.78	6.78
Jul	9,619	7,589	6,893	436	344	313	10.76	7.33	6.22
Aug	9,041	7,492	7,182	410	340	326	10.02	7.10	6.48
Sep	8,315	8,068	7,162	377	366	325	9.25	7.81	6.25
Average	8,992	7,716	7,079	408	350	321	10.01	7.41	6.32
Oct	7,348	8,070	7,189	333	366	326	8.57	7.82	6.38
Nov	7,552	7,694	7,066	343	349	321	8.11	7.39	6.23
Dec	7,568	7,963	7,203	343	361	327	8.23	7.90	6.31
Average	7,489	7,909	7,153	340	359	324	8.30	7.70	6.31
Jan	8,043	8,049		365	365		8.99	7.92	
Feb	8,423	8,070		382	366		9.28	8.04	
Mar	8,457	7,663		384	348		8.49	7.59	
Average	8,308	7,927		377	360		8.92	7.85	
FY average	8,485	7,855	7,126	385	356	323	9.56	7.69	6.47
Jan-Dec average	8,821	7,950	7,326	400	361	332	10.38	7.95	6.82
4QFCST			7,300			331			6.50
3Q-4Q(FCST in Nov.)			7,000			318			6.30

	Gold (\$/oz)			Zinc (\$/t)			Exchange (¥/US\$)		
	FY2011	FY2012	FY2013	FY2011	FY2012	FY2013	FY2011	FY2012	FY2013
Apr	1,474.1	1,649.3	1,485.5	2,372	1,997	1,852	83.45	81.56	97.73
May	1,511.3	1,585.3	1,415.4	2,160	1,930	1,829	81.24	79.77	101.10
Jun	1,528.5	1,596.2	1,342.5	2,230	1,856	1,839	80.56	79.30	97.46
Average	1,504.7	1,610.3	1,414.5	2,254	1,928	1,840	81.75	80.21	98.76
Jul	1,570.7	1,593.3	1,285.5	2,391	1,851	1,835	79.52	79.04	99.77
Aug	1,757.7	1,625.9	1,346.1	2,212	1,814	1,894	77.28	78.69	97.85
Sep	1,776.3	1,743.2	1,348.6	2,077	2,002	1,848	76.88	78.18	99.22
Average	1,701.6	1,654.1	1,326.7	2,227	1,889	1,859	77.89	78.64	98.95
Oct	1,666.6	1,746.7	1,315.3	1,859	1,912	1,882	76.75	78.99	97.86
Nov	1,737.5	1,722.7	1,276.6	1,916	1,904	1,868	77.60	80.91	100.02
Dec	1,652.5	1,687.9	1,223.5	1,916	2,037	1,974	77.88	83.65	103.48
Average	1,685.5	1,719.1	1,271.4	1,897	1,951	1,908	77.41	81.18	100.45
Jan	1,656.1	1,671.4		1,981	2,033		76.99	89.24	
Feb	1,742.9	1,629.1		2,058	2,129		78.41	93.24	
Mar	1,674.4	1,591.9		2,035	1,935		82.45	94.80	
Average	1,691.1	1,630.8		2,025	2,032		79.28	92.43	
FY average	1,645.7	1,653.6	1,337.7	2,101	1,950	1,869	79.08	83.11	99.39
Jan-Dec average	1,569.1	1,668.7	1,410.9	2,193	1,948	1,910	79.85	79.83	97.65
4QFCST			1,200			2,000			102.00
3Q-4Q(FCST in Nov.)			1,300			1,850			98.00

LME Price		13/1Q		13/2Q		13/3Q		13/4Q(F)
E-Ni applied	Mar-May	7.15	Jun-Aug	6.39	Sep-Nov	6.29	Dec-Feb	6.44
Fe-Ni applied	Jan-Mar	7.85	Apr-Jun	6.78	Jul-Sep	6.32	Oct-Dec	6.31

Exchange		13/1Q		13/2Q		13/3Q		13/4Q(F)
E-Ni applied	Mar-May	97.88	Jun-Aug	98.36	Sep-Nov	99.03	Dec-Feb	102.49
Fe-Ni applied	Jan-Mar	92.43	Apr-Jun	98.76	Jul-Sep	98.95	Oct-Dec	100.45

Comparison

(2013/1Q-3Q Result vs 2012/1Q-3Q Result)

JPY100M

Operating income				(New) Segment Profit			
	13/1-3Q	12/1-3Q	Diff.		13/1-3Q	12/1-3Q	Diff.
	①	②	①-②		③	④	③-④
Mineral Resources	348	378	△ 30	Mineral Resources	499	510	△ 11
Smelting & Refining	234	257	△ 23	Smelting & Refining	224	173	51
Materials	81	24	57	Materials	84	14	70
Others	9	10	△ 1	Others	8	10	△ 2
Sub-Total	672	669	3	Diff. Adjustment	52	3	49
Headquarter Exp. etc.	△ 108	△ 63	△ 45	Recurring Profit	867	710	157
Total	564	606	△ 42				

<<Explanation of Diff.>>

1. Mineral Resources

JPY100M

	Diff.	Quantity	Price	Exchange	Cost@	Others
Hishikari (Au)	△ 30	△ 21	△ 52	52	△ 3	△ 6
Pogo (Au)	△ 1	5	△ 34	26	5	△ 3
Morenci/NP (Cu)	△ 1					
Others	2					
Op. income Total	△ 30					

Au Sales (t)	13/1-3Q	12/1-3Q	Diff.
Hishikari	5.1	5.8	△ 0.7
Pogo(100%)	7.9	7.7	0.2

2. Smelting & Refining

JPY100M

	Diff.	Quantity	Price	Cost@	Inventory	Others
Copper	△ 15	△ 26	△ 9	△ 7	△ 14	41
Nickel	△ 13	4	△ 59	△ 11	△ 12	65
Zinc/Lead	△ 2				△ 1	△ 1
Others	7					7
Op. income Total	△ 23	△ 22	△ 68	△ 18	△ 27	112

•Inventory evaluation P&L 13/1-3Q △ 37 JPY100M (Cu△10、Ni△26、Zn△1)
 12/1-3Q △ 10 JPY100M (Cu+4、Ni△14、Zn+0)

Comparison

(2013/1Q-3Q Result vs 2012/1Q-3Q Result)

3. Materials

【Net Sales, by products】

JPY100M

	13/1-3Q ①	12/1-3Q ②	Diff ①-②
Semiconductor①CuPI・COF・LF・FW・Alloy	354	487	△ 133
Semiconductor②PWB・Terminals・Recycle	286	278	8
Advanced①Film materials・Crystals	206	209	△ 3
Advanced②Battery・Magnet・Ink・Rare metals	149	114	35
Energy, Catalysts, Construction materials, Others	140	137	3
Total	1,135	1,225	△ 90

Equity in earnings of affiliated companies

JPY100M

		13/1-3Q ①	12/1-3Q ②	Diff. ①-②
Cu	Cerro Verde	85	99	△ 14
	Candelaria/Ojos	59	42	17
	Acids/Jinlong/MSMMBC	△ 2	△ 7	5
	Total	142	134	8
Ni	PT Vale Indonesia/Figesbal/NAC	19	△ 51	70
	NECC/NK/MSZ/SHCP/Others	33	16	17
	Total	194	99	95
Segment	Mineral Resources	144	141	3
	Smelting & Refining	21	△ 59	80
	Others	29	17	12
	Total	194	99	95

Comparison

(2013/3Q Result vs 2013/2Q Result)

JPY100M

Operating income				(New) Segment Profit			
	2013/3Q	2013/2Q	Diff.		2013/3Q	2013/2Q	Diff.
	①	②	①-②		③	④	③-④
Mineral Resources	95	111	△ 16	Mineral Resources	155	152	3
Smelting & Refining	68	107	△ 39	Smelting & Refining	68	97	△ 29
Materials	30	29	1	Materials	29	36	△ 7
Others	6	△ 2	8	Others	5	△ 2	7
Sub-Total	199	245	△ 46	Diff. Adjustment	45	△ 33	78
Headquarter Exp. etc.	△ 42	△ 40	△ 2	Recurring Profit	302	250	52
Total	157	205	△ 48				

<<Explanation of Diff.>>

1. Mineral Resources

JPY100M

	Diff.	Quantity	Price	Exchange	Cost@	Others
Hishikari (Au)	△ 8	△ 7	△ 5	3	△ 1	2
Pogo (Au)	△ 18	△ 8	△ 5		△ 3	△ 2
Morenci/NP (Cu)	1					
Others	9					
Op. income Total	△ 16					

	2013/3Q	2013/2Q	Diff.
Au Sales (t)			
Hishikari	1.5	1.7	△ 0.2
Pogo(100%)	2.4	2.9	△ 0.5

2. Smelting & Refining

JPY100M

	Diff.	Quantity	Price	Cost@	Inventory	Others
Copper	△ 47	△ 5	3	△ 4	△ 16	△ 25
Nickel	17		△ 4	11	10	0
Zinc/Lead	2				1	1
Others	△ 11					△ 11
Op. income Total	△ 39	△ 5	△ 1	7	△ 5	△ 35

• Inventory evaluation P&L 2013/3Q △ 5 JPY100M (Cu+1, Ni△6, Zn△0)
 2013/2Q 0 JPY100M (Cu+17, Ni△16, Zn△1)

Comparison

(2013/3Q Result vs 2013/2Q Result)

3. Materials

【Net Sales, by products】

JPY100M

	2013/3Q ①	2013/2Q ②	Diff. ①-②
Semiconductor①CuPI・COF・LF・Alloy	127	125	2
Semiconductor②PWB・Terminals・Recycle	93	107	△ 14
Advanced①Film materials・Crystals	73	62	11
Advanced②Battery・Magnet・Ink・Rare metals	50	47	3
Energy, Catalysts, Construction materials, Others	43	55	△ 12
Total	386	396	△ 10

Equity in earnings of affiliated companies

JPY100M

		2013/3Q ①	2013/2Q ②	Diff. ①-②
Cu	Cerro Verde	37	19	18
	Candelaria/Ojos	29	9	20
	Acids/Jinlong/MSMMBC	2	△ 6	8
	Total	68	22	46
Ni	PT Vale Indonesia/Figesbal/NAC	8	6	2
	NECC/NK/MSZ/SHCP/Others	9	15	△ 6
	Total	85	43	42
Segment	Mineral Resources	66	28	38
	Smelting & Refining	11	2	9
	Others	8	13	△ 5
	Total	85	43	42

Comparison

(FY2013 Forecast in Feb. vs Forecast in Nov.)

JPY100M

FY2013 Operating Income				FY2013 (New) Segment Profit			
	FCST in Feb.	FCST in Nov.	Diff.		FCST in Feb.	FCST in Nov.	Diff.
	①	②	①-②		③	④	③-④
Mineral Resources	440	440	0	Mineral Resources	670	670	0
Smelting & Refining	300	300	0	Smelting & Refining	290	280	10
Materials	100	90	10	Materials	90	80	10
Others	10	10	0	Others	10	10	0
Sub-Total	850	840	10	Diff. Adjustment	10	△ 10	20
Headquarter Exp. etc.	△ 130	△ 130	0	Recurring Profit	1,070	1,030	40
Total	720	710	10				

<<Explanation of Diff.>>

1. Mineral Resources

JPY100M

	Diff.	Quantity	Price	Exchange	Cost@	Others
Hishikari (Au)	△ 1	0	△ 7	4	3	△ 1
Pogo (Au)	△ 2	△ 1	△ 2	1	△ 1	1
Morenci/NP (Cu)	△ 4					
Others	7					
Op. income Total	0					

Au Sales (t)	FCST in Feb	FCST in Nov	Diff.
Hishikari	7.0	7.0	0.0
Pogo(100%)	10.5	10.8	△ 0.3

2. Smelting & Refining

JPY100M

	Diff.	Quantity	Price	Cost@	Inventory	Others
Copper	22	△ 1	2	△ 7	20	8
Nickel	△ 11	△ 10	2	△ 5	△ 2	4
Zinc/Lead	4				1	3
Others	△ 15					△ 15
Op. income Total	0	△ 11	4	△ 12	19	0

•Inventory evaluation P&L
 FCST in Feb △ 44 JPY100M (Cu△16、Ni△28、Zn 0)
 FCST in Nov △ 63 JPY100M (Cu△36、Ni△26、Zn△1)

Comparison

(FY2013 Forecast in Feb. vs Forecast in Nov.)

3. Materials

【Net Sales, by products】

JPY100M

	FCST in Feb. ①	FCST in Nov. ②	Diff. ①-②
Semiconductor①CuPI・COF・LF・Alloy	480	450	30
Semiconductor②PWB・Terminals・Recycle	350	360	△ 10
Advanced①Film materials・Crystals	290	280	10
Advanced②Battery・Magnet・Ink・Rare metals	210	210	0
Energy, Catalysts, Construction materials, Others	190	190	0
Total	1,520	1,490	30

Equity in earnings of affiliated companies

JPY100M

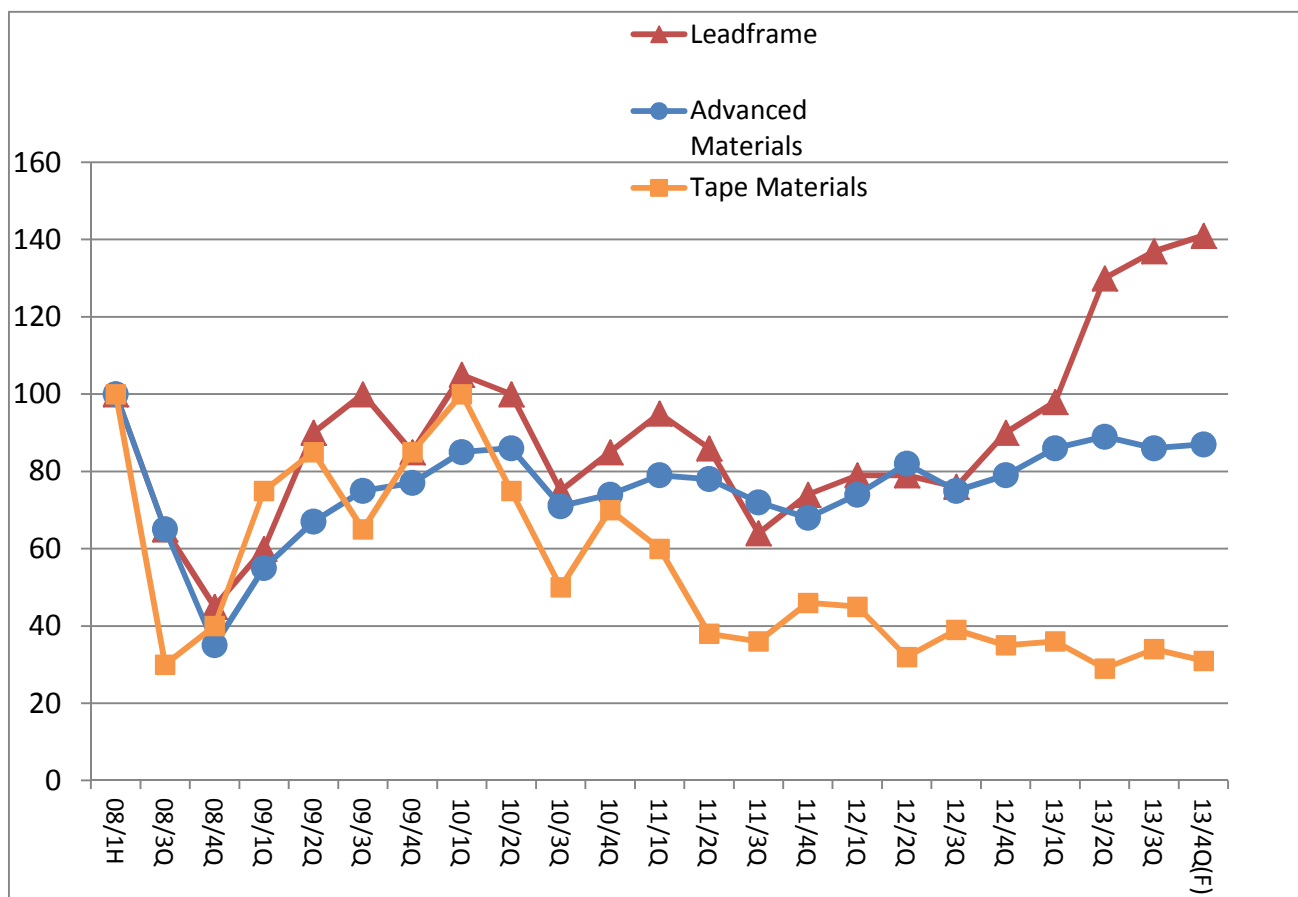
		FCST in Feb. ①	FCST in Nov. ②	Diff. ①-②
Cu	Cerro Verde	110	120	△ 10
	Candelaria/Ojos	100	90	10
	Acids/Jinlong/MSMMBC	0	0	0
	Total	210	210	0
Ni	PT Vale Indonesia/Figesbal/NAC	30	30	0
	NECC/NK/MSZ/SHCP/Others	40	40	0
	Total	280	280	0
Segment	Mineral Resources	210	210	0
	Smelting & Refining	40	40	0
	Others	30	30	0
	Total	280	280	0

Sales trend of Semiconductor Materials and Advanced Materials

(Index FY2008/1H=100)

	FY2008			FY2009				FY2010			
	08/1H	3Q	4Q	1Q	2Q	3Q	4Q	1Q	2Q	3Q	4Q
Tape Materials	100	30	40	75	85	65	85	100	75	50	70
Leadframe	100	65	45	60	90	100	85	105	100	75	85
Advanced Materials	100	65	35	55	67	75	77	85	86	71	74

	FY2011				FY2012				FY2013			
	1Q	2Q	3Q	4Q	1Q	2Q	3Q	4Q	1Q	2Q	3Q	4Q(F)
Tape Materials	60	38	36	46	45	28	39	35	36	29	34	31
Leadframe	95	86	64	74	79	77	76	90	98	130	137	141
Advanced Materials	79	78	72	68	74	73	75	79	86	89	86	87



Production/Sales trend of Mineral Resources / Smelting & Refining

		FY2011					FY2012					FY2013						
		Result					Result					Result			Forecast		Plan	Diff.
		1Q	2Q	3Q	4Q	Total	1Q	2Q	3Q	4Q	Total	1Q	2Q	3Q	4Q	Total ①	Total ②	①-②
【Gold Mine】 (t)																		
Hishikari	Production	2.0	3.2	1.4	1.2	7.8	2.5	1.1	2.0	1.9	7.5	1.7	1.9	1.4	2.0	7.0	7.0	0.0
	Sales	2.0	2.3	1.6	1.6	7.5	2.6	1.4	1.8	1.7	7.5	1.9	1.7	1.5	1.9	7.0	7.0	0.0
Pogo	Production	2.5	2.5	2.5	2.6	10.1	2.7	2.6	2.3	2.2	9.8	2.7	2.9	2.4	2.5	10.5	10.8	-0.3
	Sales	2.8	2.6	2.5	2.5	10.4	2.6	2.7	2.4	2.0	9.7	2.6	2.9	2.4	2.6	10.5	10.8	-0.3
【Copper Mine】 (kt)																		
Morenci	Production	65	72	72	70	279	69	69	73	76	287	74	77	73	82	306	325	-19.0
	Sales	63	76	69	70	278	78	50	108	71	307	78	79	54	87	298	346	-48.0
La Candelaria	Production	36	35	36	41	148	27	25	27	44	123	33	31	48	56	168	171	-3.0
	Sales	36	38	33	43	150	26	23	30	41	120	34	33	43	60	170	171	-1.0
Ojos Del Salado	Production	7	6	7	6	26	6	7	6	5	24	6	6	5	6	23	23	0.0
	Sales	6	6	7	7	26	6	7	5	6	24	6	5	6	6	23	23	0.0
Gerro Verde	Production	79	77	72	66	294	63	68	69	70	270	55	62	66	69	252	252	0.0
	Sales	77	78	73	70	298	62	67	70	68	267	54	63	66	69	252	252	0.0
North Parkes	Production	12	12	13	13	50	13	14	13	13	53	13	14	14	14	55	55	0.0
	Sales	7	14	10	16	47	11	14	15	15	55	13	14	11	18	56	53	3.0
Batu Hijau	Production	40	26	38	24	128	20	19	20	15	74	19	17	18	18	72	87	-15.0
	Sales	42	29	36	28	135	19	15	19	21	74	11	17	21	20	69	85	-16.0
【Smelting & Refining in Japan】 (kt)																		
E-Cu	Production	85.5	72.8	71.5	103.5	333.3	110.2	108.4	109.2	107.8	435.6	102.6	97.8	89.9	108.3	398.6	423.1	-24.5
	Sales	99.6	94.1	89.4	107.2	390.3	117.0	108.5	107.7	116.1	449.3	106.4	105.2	101.7	112.8	426.1	433.0	-6.9
E-Ni	Production	9.5	10.6	10.5	11.2	41.7	10.0	10.8	10.0	10.8	41.5	10.2	12.9	12.3	14.3	49.8	53.4	-3.6
	Sales	10.0	11.9	11.2	11.3	44.4	11.2	11.2	10.3	11.8	44.5	10.2	12.1	11.8	11.4	45.5	50.2	-4.7
FeNi	Production	4.8	5.4	4.5	5.7	20.4	4.7	6.0	5.3	5.8	21.9	4.7	5.1	6.2	5.9	21.9	22.4	-0.5
	Sales	5.2	5.3	4.9	5.3	20.7	5.1	5.7	5.3	5.8	21.9	4.5	4.7	5.7	6.5	21.4	22.2	-0.8
【Smelting & Refining overseas】 (kt)																		
CBNC MS (Ni content)	Production	5.6	5.1	6.0	5.8	22.5	6.5	5.2	6.5	5.7	23.9	6.2	5.2	6.4	5.8	23.6	24.0	-0.4
	Sales	5.5	3.6	7.4	6.2	22.7	5.4	6.1	5.5	6.9	23.9	6.2	5.2	6.7	5.5	23.6	24.0	-0.4
THPAL MS (Ni content)	Production	/											1.0	3.4	4.4	11.0	-6.6	
	Sales												0.0	2.3	2.3	10.0	-7.7	
PT Vale Matte (Ni content)	Production	16.5	18.6	18.1	13.7	66.9	12.4	16.6	20.4	21.3	70.7	18.5	19.2	19.8	18.3	75.8	79.6	-3.8
	Sales	15.7	19.4	16.1	15.6	66.8	12.5	16.3	21.8	20.8	71.4	18.9	20.1	19.6	22.0	80.6	79.6	1.0

Sensitivity

JPY100M / Year

	Change	Profit Up · Down Operating / Recurring Profit
Cu	±100 \$ /t	7/13
Ni	±10 ¢ /lb	11/13
Au	±10 \$ /Toz	5/5
¥ / \$	±1 ¥/\$	13/15

(Remark)

USD/JPY translation include RC-related and

Conversion rate of overseas consolidated / equity-method affiliate companies' profit

Financial Position

【Shareholder's Equity Ratio】

JPY100M

End of FY	FY2009	FY2010	FY2011	FY2012	FY2013/3Q	12 3-Yr 2015
Net assets	9,820	10,528	11,468	13,512	15,100	14,300
Shareholder's equity	5,869	6,305	6,597	7,693	8,707	8,800
Shareholder's Equity Ratio	59.8%	59.9%	57.5%	56.9%	57.7%	61%

【D/E Ratio】

JPY100M

End of FY	FY2009	FY2010	FY2011	FY2012	FY2013/3Q	12 3-Yr 2015
Interest-bearing debt	2,009	2,110	2,660	3,300	3,780	3,100
Shareholder's equity	5,869	6,305	6,597	7,693	8,707	8,800
D/E ratio	0.34	0.33	0.40	0.43	0.43	0.35

【Dividend payout ratio】

	FY2009	FY2010	FY2011	FY2012	FY2013/1H	12 3-Yr 2015
Dividend / share (JPY)	20.0	32.0	28.0	34.0	17.0	—
Net Income / share (JPY)	96.26	149.38	116.17	155.58	72.48	—
Dividend payout ratio	20.8%	21.4%	24.1%	21.9%	23.5%	25%+

Consolidated companies (66) / Equity-method affiliated companies (16)
at December 31, 2013
Mineral Resources

	Voting Shares	Location	Operations
Consolidated companies			
Sumiko Resources Exploration & Development Co., Ltd	100	Japan	Geological survey of resources; Test boring
Sumitomo Metal Mining America Inc.	100	USA	Exploration; Management of mining subsidiaries in USA.
Sumitomo Metal Mining Arizona Inc.	80	USA	Mining and related operations
SMM Candelaria Inc.	100	USA	Investment in local company in Chile operating Candelaria Mine
Sumitomo Metal Mining Canada Ltd.	100	Canada	Exploration, Consulting
Sumitomo Metal Mining Oceania Pty. Ltd.	100	Australia	Resource surveys, mine development and related operations in Oceania
Sumitomo Metal Mining Pogo LLC	100	USA	Investment in Pogo Mine
SMM Resources Inc.	100	Canada	Mineral Resources Business
SMM Cerro Verde Netherlands B.V.	80	Netherlands	Investments in local Peruvian companies engaged in the Cerro Verde Mine operation
SMM Exploration Corporation	100	USA	Mineral Resources Business
SMM Solomon Limited	100	Solomon Islands	Exploration in Solomon Islands
Sumitomo Metal Mining Peru S.A	100	Peru	Exploration in South America
Sumitomo Metal Mining Chile LTDA.	100	Chile	Exploration in South America
Sumiko Solomon Exploration Co., Ltd.	70	Japan	Exploration in Solomon Islands
SUMAC MINES LTD.	100	Canada	Exploration
Stone Boy Inc.	80	USA	Exploration
SMM Sierra Gorda Inversiones Ltda.	70	Chile	Investment in Sierra Gorda Project
Sumitomo Metal Mining do Brasil LTDA.	100	Brazil	Exploration in Brazil
Equity-method affiliated companies			
Sociedad Minera Cerro Verde S.A.A	21	Peru	Cerro Verde Mine
Compania Contractual Minera Candelaria	20	Chile	Candelaria Mine
Compania Contractual Minera Ojos del Salado	20	Chile	Ojos del Salade Mine
Sierra Gorda SCM	45	Chile	Sierra Gorda Mine
Cordillera Exploration Co., Inc.	25	Philippines	Exploration in Philippines

Smelting & Refining

	Voting Shares	Location	Operations
Consolidated companies			
Hyuga Smelting Co., Ltd	60	Japan	Ferro-nickel smelting
Shisaka Smelting Co., Ltd.	100	Japan	Manufacture of crude zinc oxide
Sumiko Logistics Co., Ltd.	100	Japan	Maritime trading; Harbor transportation and services; Land Transportation
SUMIC Nickel Netherlands b.v.	52	Netherlands	Investment in nickel and cobalt development businesses; Sale of nickel and cobalt
Coral Bay Nickel Corporation	54	Philippines	Manufacture of nickel and cobalt
Taganito HPAL Nickel Corporation	62.5	Philippines	Taganito Project
Sumitomo Metal Mining Philippine Holdings Corporation	100	Philippines	Regional headquarters for the nickel business
Sumitomo Metal Mining Management (Shanghai) Co., Ltd.	100	China	Sales of SMM and SMM group company products in China, Provision of management business service for Chinese group companies, Business consulting
Taihei Metal Industry Co., Ltd.	97	Japan	Manufacture of heat-, corrosion- and friction-resistant steel castings and precision castings
Equity-method affiliated companies			
Jinlong Copper Co., Ltd.	27	China	Manufacture and sale of electrolytic copper and sulfuric acid
Acids Co., Ltd.	50	Japan	Manufacture and sale of sulfuric acid and related products
PT Vale Indonesia Tbk	20	Indonesia	Nickel ore mining; Nickel smelting
Nickel Asia Corporation	25	Philippines	Nickel ore mining
FIGESBAL	26	New Caledonia	Nickel ore mining; Harbor transportation
MS Zinc Co., Ltd.	50	Japan	Manufacture and sale of zinc and related operations
Mitsui Sumitomo Metal Mining Brass & Copper Co., Ltd	50	Japan	Manufacture and sale of copper and brass products and processed copper and brass products

Materials

	Voting Shares	Location	Operations
Consolidated companies			
SH Materials Co., Ltd.	51	Japan	Manufacture and sale of leadframes
Okuchi Electronics Co., Ltd.	100	Japan	Recovery and recycling of non-ferrous metals /Manufacture of functional inks
Okuchi Materials Co., Ltd.	100	Japan	Manufacture of leadframes
Niihama Electronics Co., Ltd.	100	Japan	Manufacture of flexible circuit materials
Niihama Materials Co., Ltd.	100	Japan	Manufacture of leadframes
SH Precision Co., Ltd.	100	Japan	Manufacture of leadframes
Shinko Co., Ltd.	97	Japan	Design, manufacture, and sale of printed circuit boards
SH Asia Pacific Pte. Ltd.	100	Singapore	Regional headquarters for international lead frame operations
Sumiko Tape Materials Singapore Pte.Ltd.	100	Singapore	Regional headquarters for international tape materials operations
Malaysian SH Electronics Sdn.Bhd.	100	Malaysia	Manufacture and sale of leadframes
Malaysian SH Precision Sdn.Bhd.	100	Malaysia	Manufacture and sale of leadframes
Malaysian Electronics Materials SDN.BHD.	100	Malaysia	Manufacture and sale of thick film materials
Sumiko Electronics Taiwan Co.,Ltd.	70	Taiwan	Manufacture and sale of tape materials
SH Electronics Taiwan Co., Ltd.	70	Taiwan	Manufacture and sale of leadframes
Taiwan Sumiko Materials Co., Ltd	100	Taiwan	Manufacture of thin film materials
Sumiko Leadframe Chengdu Co., Ltd.	70	China	Manufacture and sale of leadframes
Sumiko Precision Chengdu Co., Ltd	70	China	Manufacture of leadframes
Sumiko Electronics Suzhou Co., Ltd.	100	China	Manufacture and sale of leadframes
SH Electronics Suzhou Co., Ltd.	100	China	Manufacture of leadframes
Sumiko Advanced Materials (Suzhou) Co., Ltd..	100	China	Manufacture and sale of alloy preforms
SumikoTec Co., Ltd.	100	Japan	Terminals and connectors for electronic and electric equipment/Components, electric wire, power cords and pressure bonding machines relating to the above and their maintenance/Manufacture and sale of formed products for optical equipment, etc.
Nittosha Co., Ltd.	100	Japan	Plating of metal products, surface treatment processing and distribution / Electromagnetic shielding processing to electronics resin products through a dry plating method
Sumiko Kunitomi Denshi Co., Ltd.	100	Japan	Manufacture of crystal products and magnetic materials
Shanghai Sumiko Electronic Paste Co., Ltd.	69	China	Manufacture and sale of thick-film paste
Dongguan Sumiko Electronic Paste Co., Ltd.	85	China	Manufacture and sale of thick-film paste
SMM KOREA Co., Ltd..	100	Korea	Sales support for advanced materials and business operations
SMM Precision Co., Ltd.	100	Japan	Manufacture and sale of optical communications components
Sumico Lubricant Co., Ltd.	100	Japan	Manufacture and sale of various lubricants
Sumico Lubricant Trading (Shanghai) Co., Ltd.	100	China	Sale of various lubricants
Sumitomo Metal Mining Siporex Co., Ltd.	100	Japan	Manufacture and sale of ALC (Autoclaved Lightweight aerated Concrete) and other construction materials
JCO Co., Ltd.	100	Japan	Management of facilities using uranium and related wastes
Igeta Heim Co., Ltd.	100	Japan	Construction of steel frame and reinforced concrete apartments and condominiums
Japan Irradiation Service Co., Ltd.	100	Japan	Irradiation sterilization service for pharmaceutical products, medical instruments, and pharmaceutical containers, etc. /Modification of various industrial materials
Equity-method affiliated company			
SH Copper Products Co., Ltd.	50	Japan	Manufacture and sale of copper strips, copper bars, rods, and fabricated parts
N. E. Chemcat Corporation	50	Japan	Manufacture of precious metal catalysts; Recovery and refining of precious metals
Nippon Ketjen Co., Ltd.	50	Japan	Manufacture and sale of desulphurization catalysts for petroleum processing
Granopt Ltd.	50	Japan	Manufacture and sale of rare earth iron garnet (RIG)

Others

	Voting Shares	Location	Operations
Consolidated companies			
Sumiko Techno-Research Co., Ltd.	100	Japan	Environmental measurement verification operations such as water quality, air, soil, noise and vibration, etc. Data collection, adjustment and product evolution as well as technological development
Sumiko Technical Service Co., Ltd	100	Japan	Commission-based work in area of nonferrous smelting/ Personnel agency business
Sumitomo Metal Mining Engineering Co., Ltd.	100	Japan	Nonferrous metal smelting, Chemicals business, Environment sector machinery & equipment, Plant surveys, etc. design, manufacturing and repair & maintenance
Sumiko Plantech Co., Ltd.	100	Japan	Manufacture of machinery & equipment and repair work for nonferrous metal smelting and chemical plants, etc. / Installation of machinery & equipment and piping work / Steel structure work
SMM Holland B.V.	100	Netherlands	Investment in nickel and cobalt development businesses