

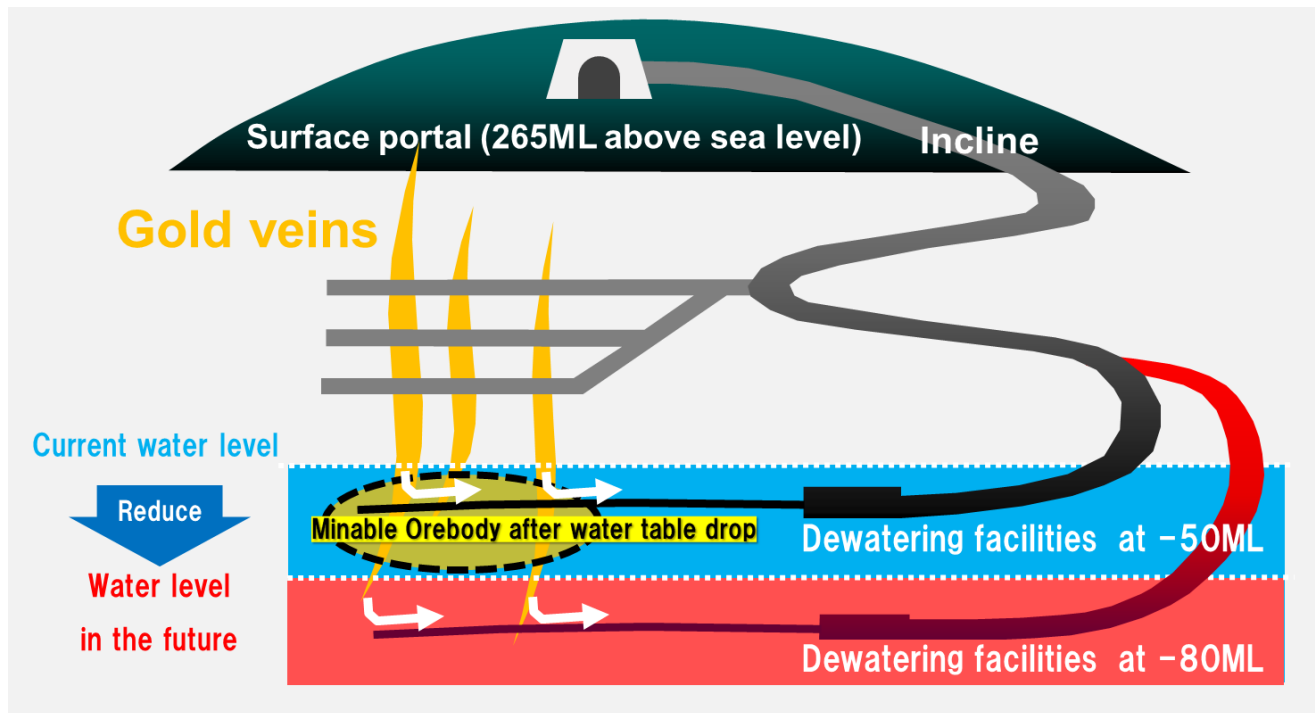
Commencement of Mining at the Lower Orebody of the Hishikari Mine

Sumitomo Metal Mining Co., Ltd. (Head office: Minato-ku, Tokyo; President & Representative Director: Akira Nozaki, hereinafter referred to as “SMM”) has been developing the orebody at a deeper level of the Hishikari Mine (Isa City, Kagoshima Prefecture) with the aim of increasing ore reserves. The installation of new dewatering facilities that pump hot spring water from the mine and reduce the water level (hereinafter referred to as the “new dewatering facilities”) was completed, and with the completion of further preparations for mining activity, mining of the lower orebody has commenced.

Hot spring water floods the underground of the Hishikari Mine constantly, and the first dewatering facilities were installed at 50 meters below sea level to facilitate the removal of water for the mining of gold ore. After additional exploration confirmed that the lower part of the orebody was also promising, in 2012 SMM decided to begin development of the deeper part of the orebody, and began construction of new dewatering facilities at 80 meters below sea level. The new dewatering facilities have now been in operation since March 2022, and the water level has dropped to the level that allows SMM to commence the mining of the lower orebody. We will keep moving forward to complete the rest of the construction work, including additional drainage borings, for the further development of the lower orebody, taking safety and environmental concerns into consideration.

The Hishikari Mine is the largest gold mine in Japan in terms of production volume and it is an important and stable source of revenue for SMM. It also plays an important role as a “mining school,” acting as a training ground for mining engineers who will inherit advanced technical skills and become active in the mining industry worldwide. We will continue our efforts to acquire further gold resources and establish a sustainability-oriented operation system for the long-term stable operation of the Hishikari Mine.

Reference: Image of the mine



For inquiries regarding this matter, please contact

Public Relations and Investor Relations Department, Sumitomo Metal Mining Co.
Shimbashi Sumitomo Building, 5-11-3 Shimbashi, Minato-ku, Tokyo
TEL: 03-343 6-7705 Email: smm_koho@smm-g.com